

## Light Troffer Diffuser (LTD)

### Description

ASLI Light Troffer Diffusers (LTD) are designed to fit virtually any available light fixture with air diffuser capabilities. The coordination of air distribution and lighting into a single, efficient ceiling unit, giving a pleasing appearance. The LTD deflectors direct the supply air away from the light fitting as to prevent condensation. LTD are excellent for VAV system as they have high induction ratio and strong horizontal air pattern. Standard features include volume damper and locking tabs to hold the diffuser to the light fixture.

### Material

Part	Standard	Optional
Casing	0.7mm Galvanized Steel	1.0mm Galvanized Steel
Blade	0.5mm Galvanized Steel	Extruded Aluminum
Insulation	PE foam	Fiberglass

### Surface Finish

- Mill Galvanized on body
- Matt black on the slot diffuser face

### Features

- Custom manufactured to fit all air handling light fixtures
- Volume control damper at the inlet to control air volume
- Air pattern adjustable from horizontal to vertical through deflectors
- Oval and round inlet available
- Supply or return air application
- Internal insulation

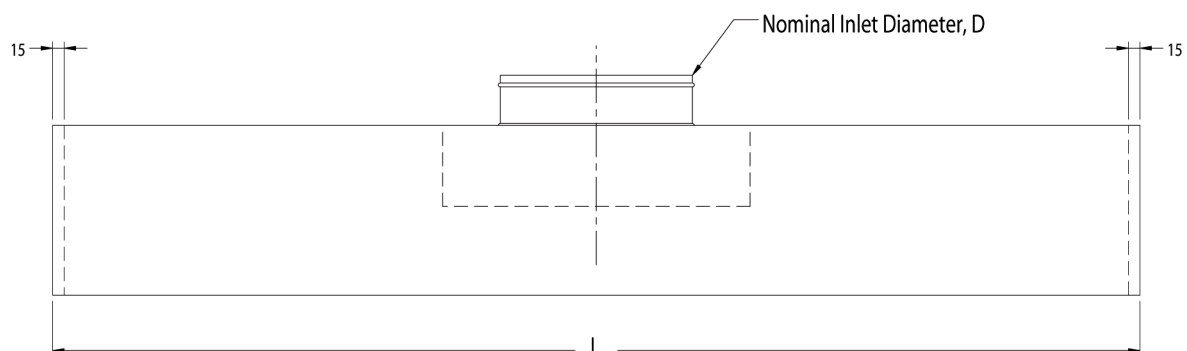
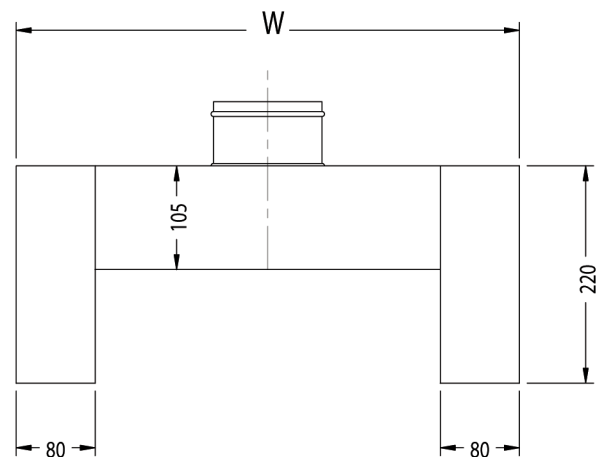
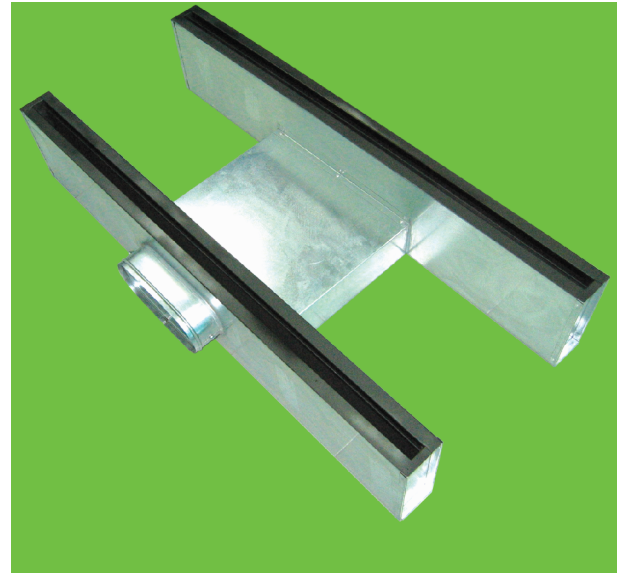
### Standard Model:

- Single sided/side inlet (LTD-S-S)
- Double sided/side inlet (LTD-D-S)
- Double sided/top inlet (LTD-D-T)

### Standard Nominal Inlet Diameter:

- Top round/oval inlet nominal diameter: 100, 125, 150, 200 (mm)
- Side oval inlet nominal diameter: 100, 125, 150, 200 (mm)

### Dimension:



# LIGHT TROFFER DIFFUSER (LTD)



## ■ Performance Data

LTD-S-S (L=600mm)

Inlet Size (mm)	CMH		50	60	65	75	85	100	120	135
	Throw (m)	H	2.4-3.0	2.7-3.3	2.7-3.9	3.0-4.2	3.3-4.5	3.6-4.8	3.9-5.4	3.9-5.7
		V	1.2-1.8	1.5-2.1	1.5-2.1	1.5-2.4	1.8-2.4	1.8-2.7	2.1-2.7	2.1-3.0
100	Tot. Press. (Pa)	H	21	28	37	47	59	84	115	149
		V	18	24	31	39	49	70	95	123
	NC	H	-	23	27	30	33	38	43	46
		V	-	23	27	30	33	38	43	46
125	Tot. Press. (Pa)	H	21	28	37	47	59	84	115	149
		V	18	24	31	39	49	70	95	123
	NC	H	-	23	27	30	33	38	43	46
		V	-	23	27	30	33	38	43	46
150	Tot. Press. (Pa)	H	21	28	37	47	59	84	115	149
		V	18	24	31	39	49	70	95	123
	NC	H	-	23	27	30	33	38	43	46
		V	-	23	27	30	33	38	43	46

LTD-S-S (L=1200mm)

Inlet Size (mm)	CMH		85	100	120	135	150	170	205	135
	Throw (m)	H	1.2-2.0	1.5-2.4	1.8-2.4	1.8-2.7	2.1-2.8	2.1-3.0	2.4-3.3	2.4-3.6
		V	1.2-1.5	1.2-1.8	1.2-1.8	1.5-2.0	1.5-2.4	1.5-2.4	1.8-2.4	2.1-2.6
100	Tot. Press. (Pa)	H	18	25	33	44	56	69	100	129
		V	15	21	29	38	49	59	84	118
	NC	H	-	22	25	29	32	35	39	45
		V	-	21	24	28	31	34	38	43
125	Tot. Press. (Pa)	H	13	18	25	35	39	49	71	96
		V	11	16	21	27	34	42	63	84
	NC	H	-	-	21	24	28	31	36	41
		V	-	-	20	24	27	30	36	40
150	Tot. Press. (Pa)	H	11	15	21	26	34	42	62	84
		V	10	13	18	24	29	37	53	73
	NC	H	-	-	-	22	26	29	34	39
		V	-	-	-	22	25	28	33	38
200	Tot. Press. (Pa)	H	9	12	18	21	29	35	53	74
		V	8	10	15	20	24	31	41	61
	NC	H	-	-	-	-	24	27	32	38
		V	-	-	-	-	23	26	31	37

- Throw is based on terminal velocities of 0.5m/s and 0.25m/s respectively.
- NC value is based on room absorption of 10dB, re 10<sup>-12</sup> watts.
- Dash (-) indicates NC less than 20.
- H indicates horizontal throw, V indicates vertical throw.
- The performance data is tested based on A.D.C. standard

# LIGHT TROFFER DIFFUSER (LTD)



## ■ Performance Data

LTD-D-S (L=600mm)

Inlet Size (mm)	CMH		135	170	205	235	270	305	340	370
	Throw (m)		H	1.2-2.1	1.5-2.4	1.8-2.7	2.1-3.0	2.1-3.3	2.4-3.6	2.7-3.9
			V	1.2-1.5	1.2-1.8	1.5-2.1	1.5-2.1	1.5-2.4	1.8-2.4	1.8-2.7
100	Tot. Press. (Pa)	H	12	18	25	35	58	71	87	103
		V	10	16	25	34	44	68	82	100
	NC	H	-	21	26	30	34	40	43	45
		V	-	20	25	29	33	39	42	44
125	Tot. Press. (Pa)	H	8	13	19	25	33	51	62	74
		V	7	11	16	21	28	44	53	62
	NC	H	-	-	21	25	29	35	38	41
		V	-	-	20	24	28	34	37	39
150	Tot. Press. (Pa)	H	8	13	19	25	33	51	62	74
		V	8	11	16	21	28	44	53	62
	NC	H	-	-	21	25	29	35	38	41
		V	-	-	20	24	28	34	37	39

LTD-D-S (L=1200mm)

Inlet Size (mm)	CMH		135	170	205	235	270	305	340	370
	Throw (m)		H	0.6-1.2	0.9-1.5	0.9-1.5	1.2-1.8	1.2-1.8	1.5-2.1	1.5-2.1
			V	0.6-0.9	0.6-0.9	0.9-1.2	0.9-1.2	0.9-1.2	0.9-1.5	0.9-1.5
100	Tot. Press. (Pa)	H	30	47	69	93	121	157	182	210
		V	16	25	36	49	64	84	105	126
	NC	H	27	33	38	42	46	49	53	55
		V	21	27	32	37	40	44	47	49
125	Tot. Press. (Pa)	H	16	25	37	64	66	84	104	126
		V	10	15	22	30	40	51	62	77
	NC	H	-	23	29	33	37	4	43	46
		V	-	-	24	29	32	36	39	42
150	Tot. Press. (Pa)	H	13	20	29	39	51	66	81	101
		V	8	12	18	24	32	40	49	61
	NC	H	-	-	24	29	32	36	39	42
		V	-	-	22	26	29	33	36	39
200	Tot. Press. (Pa)	H	8	12	23	25	32	41	51	63
		V	5	7	13	14	18	23	29	36
	NC	H	-	-	-	23	29	32	35	38
		V	-	-	-	-	24	28	31	33

- Throw is based on terminal velocities of 0.5m/s and 0.25m/s respectively.
- NC value is based on room absorption of 10dB, re  $10^{-12}$  watts.
- Dash (-) indicates NC less than 20.
- H indicates horizontal throw, V indicates vertical throw.
- The performance data is tested based on A.D.C. standard.

# LIGHT TROFFER DIFFUSER (LTD)



## ■ Performance Data

LTD-D-T (L=600mm)

Inlet Size (mm)	CMH		135	170	205	235	270	305	340	370
	Throw (m)		H	1.2-2.1	1.5-2.4	1.8-2.7	2.1-3.0	2.1-3.3	2.4-3.6	2.7-3.9
			V	1.2-1.5	1.2-1.8	1.5-2.1	1.5-2.1	1.5-2.4	1.8-2.4	1.8-2.7
100	Tot. Press. (Pa)	H	17	25	36	50	82	102	124	147
		V	15	24	35	48	63	97	117	143
	NC	H	-	23	28	32	36	42	45	47
		V	-	22	27	31	35	41	44	46
125	Tot. Press. (Pa)	H	12	19	26	36	47	74	88	106
		V	10	16	23	30	40	63	75	89
	NC	H	-	-	23	27	31	37	40	43
		V	-	-	22	26	30	36	39	41
150	Tot. Press. (Pa)	H	12	19	26	36	47	74	88	106
		V	11	16	23	30	40	63	75	89
	NC	H	-	-	23	27	31	37	40	43
		V	-	-	22	26	30	36	39	41

LTD-D-T (L=1200mm)

Inlet Size (mm)	CMH		135	170	205	235	270	305	340	370
	Throw (m)		H	0.6-1.2	0.9-1.5	0.9-1.5	1.2-1.8	1.2-1.8	1.5-2.1	1.5-2.1
			V	0.6-0.9	0.6-0.9	0.9-1.2	0.9-1.2	0.9-1.2	0.9-1.5	0.9-1.5
100	Tot. Press. (Pa)	H	43	68	98	132	173	224	260	300
		V	23	35	52	71	92	120	150	180
	NC	H	28	34	39	43	47	50	54	56
		V	22	28	33	38	41	45	48	50
125	Tot. Press. (Pa)	H	24	36	53	92	94	120	148	179
		V	14	22	31	43	57	73	89	110
	NC	H	-	24	30	34	38	41	44	47
		V	-	-	25	30	33	37	40	43
150	Tot. Press. (Pa)	H	19	28	41	56	73	94	116	144
		V	11	18	25	34	45	57	71	87
	NC	H	-	-	25	30	33	37	40	43
		V	-	-	23	27	30	34	37	40
200	Tot. Press. (Pa)	H	12	18	32	35	45	59	73	90
		V	7	10	19	20	25	33	41	52
	NC	H	-	-	-	24	30	33	36	39
		V	-	-	-	-	25	29	32	34

- Throw is based on terminal velocities of 0.5m/s and 0.25m/s respectively.
- NC value is based on room absorption of 10dB, re 10<sup>-12</sup> watts.
- Dash (-) indicates NC less than 20.
- H indicates horizontal throw, V indicates vertical throw.
- The performance data is tested based on A.D.C. standard.

Order Code

Model	No.Sided	Inlet Location	Nominal Inlet Diameter	Round/Oval Inlet	Width W	Length L
LTD	S-Single D-Double	S-Side T-Top	100mm, 125mm, 150mm, 200mm	O-Oval R-Round	Varies	Varies

Example: LTD-D-S-200mm-O-600mmX1200mm

ASLI reserves the right to change the catalogue information without any prior notice.