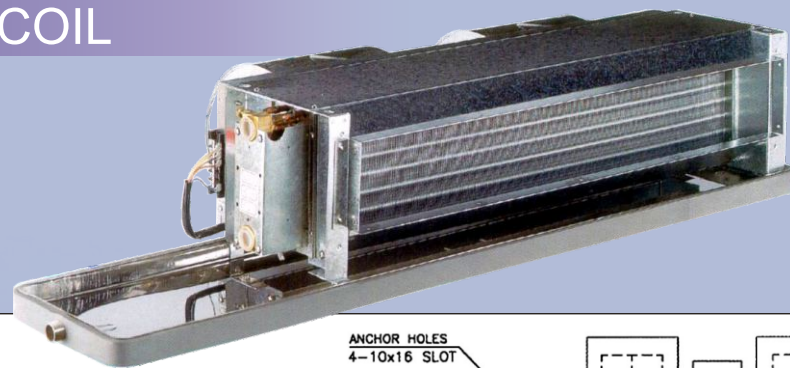
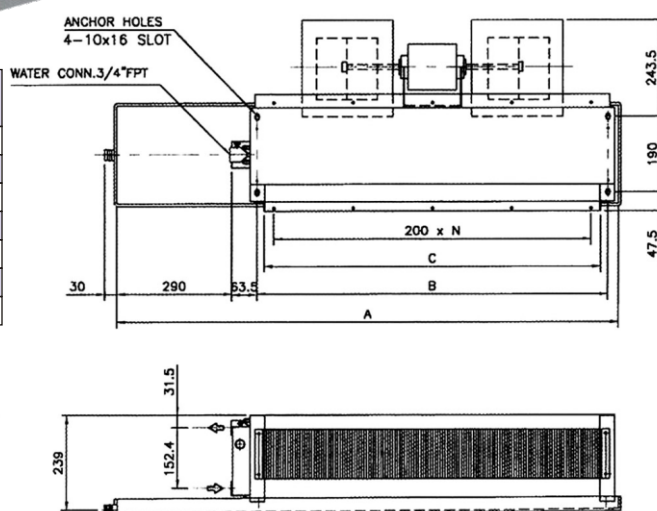
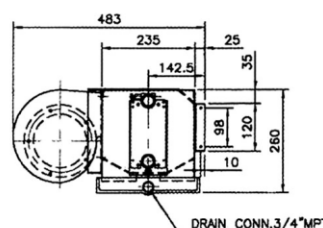


■ TATUNG FAN COIL



■ Dimension table

Model	Dimensions			Weight
	A	B	C	
301E/302E	875	500	462	14
401E/402E	1,125	750	712	17
601E/602E	1,260	885	847	21
801E/802E	1,545	1,170	1,132	25
1001E/1002E	1,730	1,340	1,302	32
1201E/1202E	1,980	1,590	1,552	37
1401E/1402E	2,160	1,770	1,732	41



■ Standard Specifications

Model Item			TFWM						
			301E 302E	401E 402E	601E 602E	801E 802E	1001E 1002E	1201E 1202E	1401E 1402E
Power source			1ø 220V 50Hz						
Cooling Capacity (Btu/hr)			9,120	13,130	20,230	27,380	32,140	39,080	42,896
Power consumption (w)		low static pressure	65	75	100	140	160	200	272
		high static pressure	82	119	145	190	238	280	370
Fan	Type		Multi-Blade						
	Quantity		1	2	2	2	3	4	4
	Air volume CFM	high speed	358	510	684	750	983	1,286	1,483
	Output W		17	22	27	40	49	54	80
Dry coil maximum static pressure (mmAq)		low static pressure	3	3	3	3	3	3	3
		high static pressure	5	5	5	5	5	5	5
Heat exchanger			Cross fin coil						
Flow rate (l/min)			8	11	17	23	27	33	36
Lost head (mH ₂ O)			0.55	1.40	3.38	7.23	1.64	2.68	3.46
Weight(kg) (non-return air box and air filter)			17	21	25	30	38	44	49
Piping	Chiller inlet/outlet		3/4"FPT						
	Drain plug		3/4"MPT						
Isolation material			6mm PE						
Exterior Dimensions			Dimension table						

Note 1. Cooling capacity is based on indoor air temperature 27°C DB/19°C WB, inlet water temperature 7°C.

2. Standard product with low static pressure, the left piping.

3. Return air box with air filter another purchase.

TATUNG CO.

22 Chungshan North Road, 3rd Sec., Taipei 104, Taiwan, R.O.C.

Tel : 886-2-25925252 ext.2401

Fax : 886-2-25984436

Telex."11348 / 22830 TATUNG"

E-mail : tlkuo@tatung.com

LÔ D4_CN-D9_CN, Đường NA3, KCN Mỹ Phước 2,
Huyện Bến Cát, Bình Dương, Việt Nam

Tel : (0650)3567800

Fax : (0650)3567803

ĐTĐĐ : 0907-878-631

E-mail : j.b.hsu@tatung.com

VAT Code : 3700650601

2010.02 NO.492-1210593



TATUNG Water-Cooled Chillers

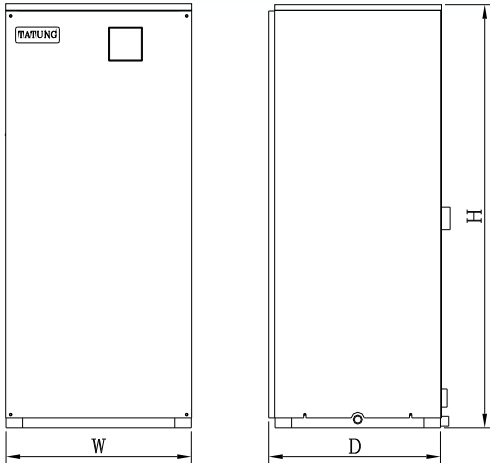
Dry-Expansion

R-22 EA

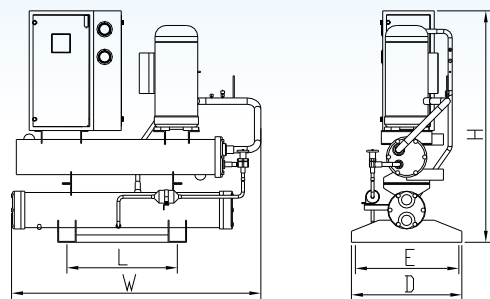


Your best choice Your best partner

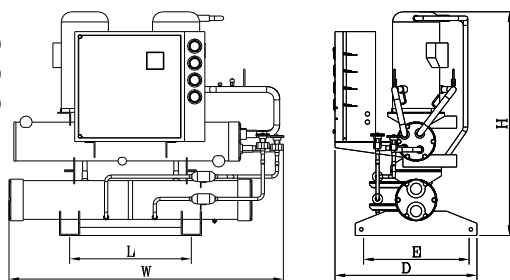
TCW-5EAK1D
TCW-8EAK1D
TCW-10EAK1D



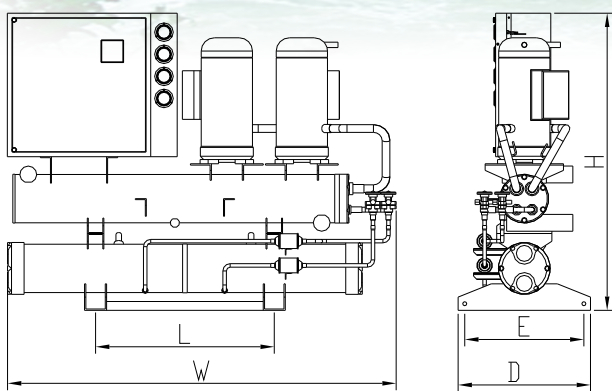
TCW-15EAK1D



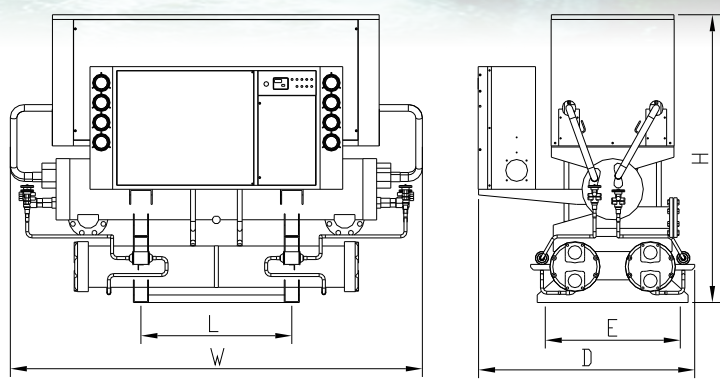
TCW-15EAK2D
TCW-20EAK2D
TCW-25EAK2D



TCW-30EAK2D



TCW-40EAK4D
TCW-50EAK4D
TCW-60EAK4D



■ Specifications

Model		TCW-5EAK1D	TCW-8EAK1D	TCW-10EAK1D	TCW-15EAK1D	TCW-15EAK2D	TCW-20EAK2D
Power Source		3ø 380/415V 50Hz					
Cooling Capacity KW(But/hr)		18(60,000)	26(90,000)	35(120,000)	53(180,000)	53(180,000)	70(240,000)
Dimension	Height H (mm)	1,280	1,280	1,280	1,300	1,300	1,300
	Width W (mm)	560	560	560	1,400	1,400	1,600
	Depth D (mm)	520	520	520	600	650	650
Foundation holes L * E (mm)		—	—	—	810*500	810*500	810*500
380V Running Current A		8.8	12.8	17.2	27.8	26.0	34.4
415V Running Current A		8.1	11.7	15.7	25.5	23.8	31.5
Power Consumption KW		4.2	6.1	8.2	13.2	12.4	16.4
COP W/W		4.29	4.26	4.27	4.02	4.27	4.27
Evaporator	Type	Plate heat exchanger			Shell and Tube		
	Flow rate L/min	50	75	100	150	150	200
	Lost head M	3.0	3.0	3.0	3.0	3.0	3.0
	Pipe connections	PT 1-1/4	PT 1-1/2	PT 1-1/2	PT 2	PT 2	PT 2
Condenser	Type	Double pipe heat exchanger			Shell and Tube		
	Flow rate L/min	65	95	125	190	190	250
	Lost head M	3.0	3.0	3.0	3.5	3.5	4.0
	Pipe connections	PT 1-1/4	PT 1-1/4	PT 1-1/2	PT 2	PT 2	PT 2
Refrigerant control		Capillary tube			Thermal expansion valve		
Compressor	Type	Scroll					
	Oil heater W	—	—	—	—	—	—
Capacity step %		0,100			0,50,100		
Starting method		Direct			Sequence direct		
Safety devices		High/Low pressure switch, Over current relay, Phase reversal protector Thermal interior protector, Fusing plug, Antifreeze protector					
Refrigerant		R-22					
Refrigeration Oil		Nameplate in chiller					
Net weight kg		150	200	250	450	550	650
Operation weight kg		175	230	285	520	630	750

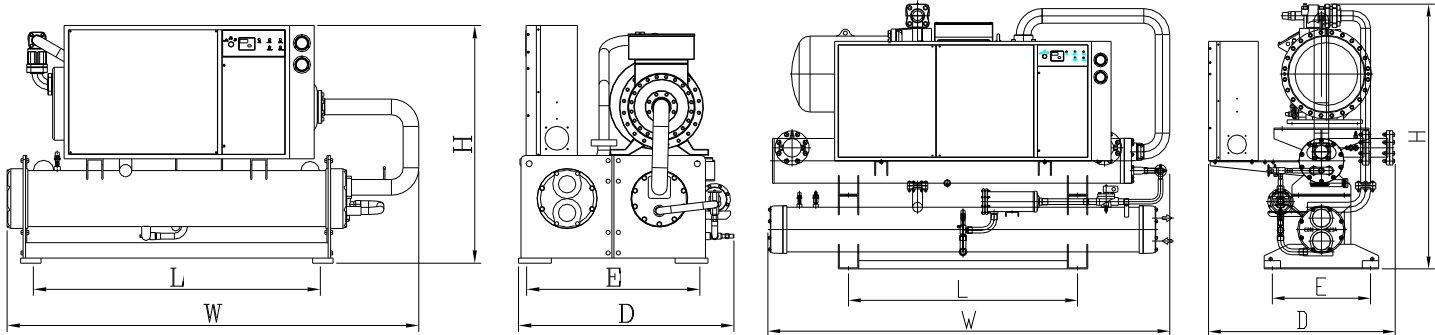
Note1: Cooling capacity is based on: Cooling water outlet 35℃,inlet 30℃;Chilled water out 7℃,inlet12℃.
2:Specifications are subject to change with out notice for further improvement.

■ Specifications

Model		TCW-25EAK2D	TCW-30EAK2D	TCW-40EAK4D	TCW-50EAK4D	TCW-60EAK4D
Power Source		3ø 380/415V 50Hz				
Cooling Capacity KW(Btu/hr)		88(300,000)	106(360,000)	141(480,000)	176(600,000)	211(720,000)
Dimension	Height H (mm)	1,400	1,400	1,700	1,700	1,700
	Width W (mm)	1,700	1,800	2,200	2,300	2,300
	Depth D (mm)	650	800	1,200	1,200	1,200
Foundation holes L * E (mm)		810*500	810*500	800*700	800*700	800*700
380V Running Current A		43.0	55.6	68.8	86.0	111.2
415V Running Current A		39.4	50.9	63.0	78.7	101.8
Power Consumption KW		20.5	26.4	32.8	41	52.8
COP W/W		4.29	4.02	4.30	4.29	4.00
Evaporator	Type	Shell and Tube				
	Flow rate L/min	250	300	400	500	600
	Lost head M	3.5	3.5	3.5	3.5	3.5
	Pipe connections	PT 2-1/2	PT 2-1/2	PT 3	PT 3	4B
Condenser	Type	Shell and Tube				
	Flow rate L/min	315	375	500	625	750
	Lost head M	4.5	4.5	5.0	5.0	5.0
	Pipe connections	PT 2-1/2	PT 2-1/2	PT 2*2	PT 2-1/2*2	PT 2-1/2*2
Refrigerant control		Thermal expansion valve				
Compressor	Type	Scroll				
	Oil heater W	—	—	—	—	—
Capacity step %		0,50,100		0,25,50,75,100		
Starting method		Sequence direct				
Safety devices		High/Low pressure switch, Over current relay, Phase reversal protector Thermal interior protector, Fusing plug, Antifreeze protector				
Refrigerant		R-22				
Refrigeration Oil		Nameplate in chiller				
Net weight kg		630	650	1,100	1,200	1,300
Operation weight kg		725	750	1,265	1,380	1,495

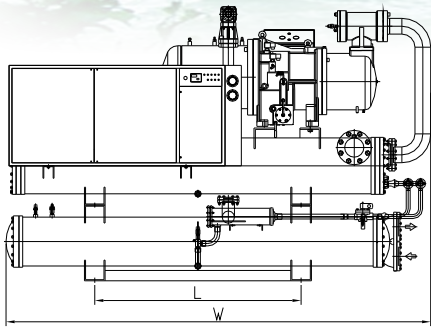
Note1: Cooling capacity is based on: Cooling water outlet 35℃,inlet 30℃;Chilled water out 7℃,inlet12℃.
2:Specifications are subject to change with out notice for further improvement.

TCW-40EA1D
TCW-50EA1D
TCW-60EA1D

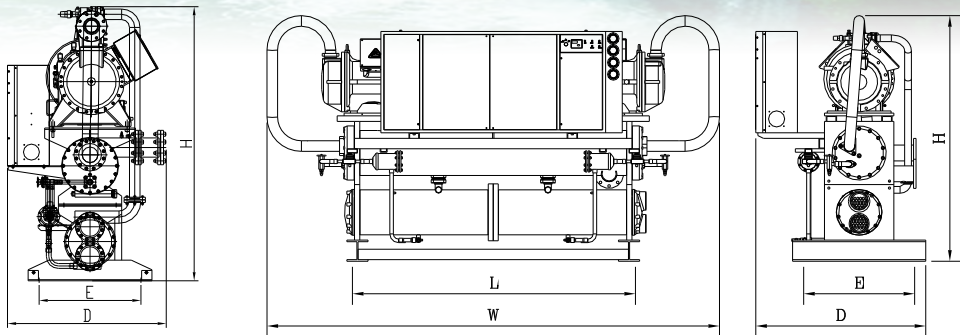


TCW-80EA1D
TCW-100EA1D
TCW-120EA1D

TCW-150EA1D



TCW-80EA2D
TCW-100EA2D
TCW-120EA2D



■ Specifications

Model		TCW-40EA1D	TCW-50EA1D	TCW-60EA1D	TCW-80EA1D	TCW-100EA1D	TCW-120EA1D
Power Source		3ø 380/415V 50Hz					
Cooling Capacity KW(But/hr)		140(480,000)	176(600,000)	211(720,000)	281(960,000)	352(1,200,000)	422(1,440,000)
Dimension	Height H (mm)	1,450	1,500	1,550	1,700	1,900	1,900
	Width W (mm)	2,200	2,200	2,350	2,600	3,000	3,000
	Depth D (mm)	1,150	1,250	1,350	1,200	1,300	1,300
Foundation holes L * E (mm)		1,400*745	1,400*845	1,500*945	1,400*600	1,400*800	1,400*800
380V Running Current A		56	70	85	111	140	167
415V Running Current A		51	64	78	102	128	153
Power Consumption KW		33	41	50	65	82	98
COP W/W		4.24	4.29	4.22	4.32	4.29	4.31
Evaporator	Type	Shell and Tube					
	Flow rate L/min	400	500	600	800	1,000	1,200
	Lost head M	4.0	5.0	5.0	3.0	3.0	3.0
	Pipe connections	PT 3	PT 3	4B	4B	4B	5B
Condenser	Type	Double pipe heat exchanger			Shell and Tube		
	Flow rate L/min	500	625	750	1,000	1,250	1,500
	Lost head M	4.0	4.0	4.0	5.0	5.0	5.0
	Pipe connections	PT 3	PT 3	PT 4	PT4	4B	5B
Refrigerant control		Thermal expansion valve					
Compressor	Type	Semi-hermetic Screw					
	Oil heater W	150	150	150	150	300	300
Capacity step %		0,50,75,100					
Starting method		Y-△					
Safety devices		High/Low pressure switch, Over current relay, Phase reversal protector, Relief valve Thermal interior protector, Antifreeze protector, Discharge temp. protector					
Refrigerant		R-22					
Refrigeration Oil		Nameplate in chiller					
Net weight kg		1,150	1,400	1,450	2,000	2,200	2,400
Operation weight kg		1,350	1,600	1,665	2,300	2,550	3,000

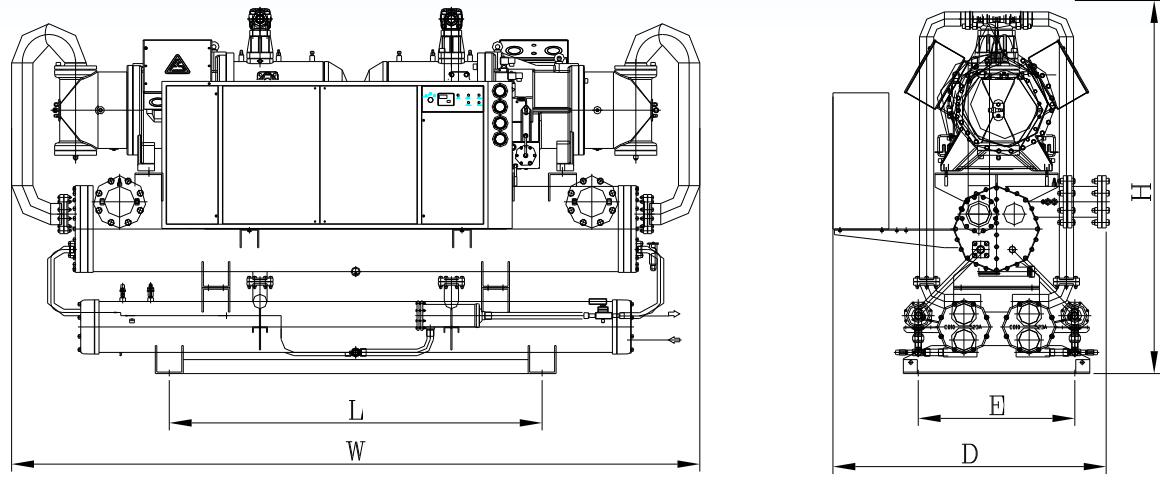
Note1: Cooling capacity is based on: Cooling water outlet 35℃,inlet 30℃;Chilled water out 7℃,inlet12℃.
2:Specifications are subject to change with out notice for further improvement.

■ Specifications

Model		TCW-150EA1D	TCW-80EA2D	TCW-100EA2D	TCW-120EA2D	TCW-150EA2D
Power Source		3ø 380/415V 50Hz				
Cooling Capacity KW(Btu/hr)		527(1,800,000)	281(960,000)	352(1,200,000)	422(1,440,000)	527(1,800,000)
Dimension	Height H (mm)	2,000	1,700	1,700	1,700	1,800
	Width W (mm)	3,200	3,400	3,500	3,500	3,600
	Depth D (mm)	1,200	1,200	1,200	1,200	1,500
Foundation holes L * E (mm)		1,500*740	2,040*800	2,040*800	2,040*800	2,000*840
380V Running Current A		213	112	140	170	213
415V Running Current A		195	103	128	156	195
Power Consumption KW		125	66	82	100	125
COP W/W		4.22	4.26	4.29	4.22	4.22
Evaporator	Type	Shell and Tube				
	Flow rate L/min	1,500	800	1,000	1,200	1,500
	Lost head M	4.5	3.0	3.0	3.0	4.5
	Pipe connections	5B	4B	4B	5B	5B
Condenser	Type	Shell and Tube				
	Flow rate L/min	1,875	1,000	1,250	1,250	1,875
	Lost head M	6.0	4.0	5.0	5.0	6.0
	Pipe connections	5B	PT 4	PT 4	5B	PT 4*2
Refrigerant control		Thermal expansion valve				
Compressor	Type	Scroll				
	Oil heater W	300	150*2	150*2	150*2	150*2
Capacity step %		0,50,75,100	0,25,50,75,100			
Starting method		Y-△				
Safety devices		High/Low pressure switch, Over current relay, Phase reversal protector, Relief valve Thermal interior protector, Antifreeze protector, Discharge temp. protector				
Refrigerant		R-22				
Refrigeration Oil		Nameplate in chiller				
Net weight kg		2,650	2,300	2,600	2,800	3,450
Operation weight kg		3,050	2,650	3,000	3,250	3,965

Note1: Cooling capacity is based on: Cooling water outlet 35℃,inlet 30℃;Chilled water out 7℃,inlet12℃.
2:Specifications are subject to change with out notice for further improvement.

TCW-160EA2D,TCW-180EA2D,TCW-200EA2D
TCW-220EA2D,TCW-240EA2D,TCW-300EA2D

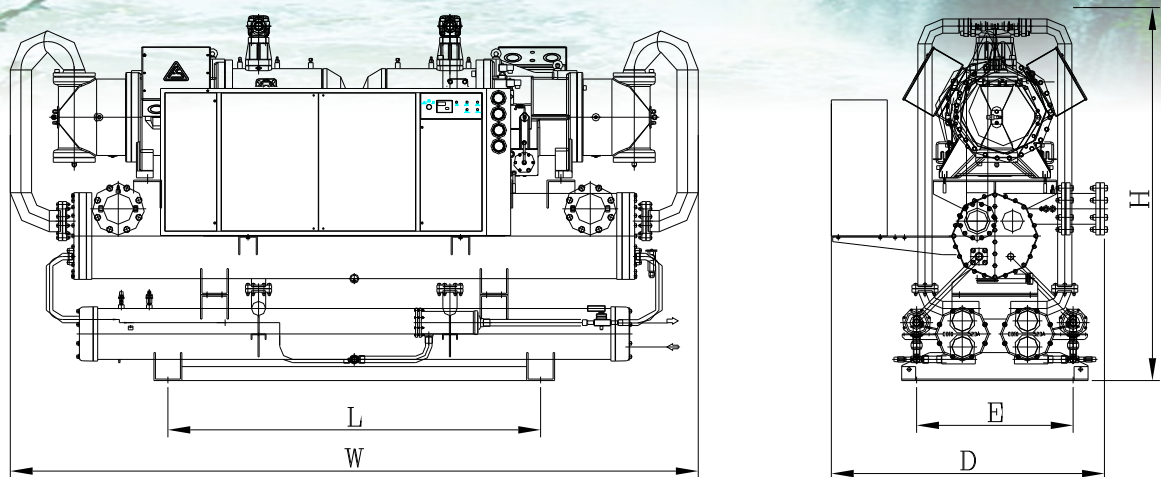


■Sepcifications

Model		TCW-160EA2D	TCW-180EA2D	TCW-200EA2D	TCW-220EA2D	TCW-240EA2D	TCW-300EA2D
Power Source		3ø 380/415V 50Hz					
Cooling Capacity KW(But/hr)		562(1,920,000)	633(2,160,000)	704(2,400,000)	774(2,640,000)	844(2,880,000)	1,054(3,600,000)
Dimension	Height H (mm)	1,800	1,800	2,100	2,100	2,100	2,200
	Width W (mm)	3,600	3,700	3,700	3,800	3,900	4,100
	Depth D (mm)	1,500	1,500	1,500	1,500	1,500	1,600
Foundation holes L * E (mm)		2,000*840	2000*840	2,000*840	2,000*840	2,000*840	2,000*1,200
380V Running Current A		222	254	280	313	334	426
415V Running Current A		203	233	256	287	306	390
Power Consumption KW		130	149	164	184	196	250
COP W/W		4.32	4.25	4.29	4.21	4.31	4.22
Evaporator	Type	Shell and Tube					
	Flow rate L/min	1,600	1,800	2,000	2,200	2,400	3,000
	Lost head M	4.5	5.0	5.0	5.5	6.0	6.0
	Pipe connections	5B	5B	6B	6B	6B	8B
Condenser	Type	Double pipe heat exchanger			Shell and Tube		
	Flow rate L/min	2,000	2,250	2,500	2,750	3,000	3,750
	Lost head M	6.0	6.0	6.0	6.0	6.0	6.5
	Pipe connections	PT 4*2	PT 4*2	PT 4*2	PT4*2	5B*2	6B*2
Refrigerant control		Thermal expansion valve					
Compressor	Type	Semi-hermetic Screw					
	Oil heater W	300*2	300*2	300*2	300*2	300*2	300*2
Capacity step %		0,25,50,75,100					
Starting method		Y-△					
Safety devices		High/Low pressure switch, Over current relay, Phase reversal protector, Relief valve Thermal interior protector, Antifreeze protector, Discharge temp. protector					
Refrigerant		R-22					
Refrigeration Oil		Nameplate in chiller					
Net weight kg		3,600	3,750	3,900	4,100	4,300	4,750
Operation weight kg		4,150	4,310	4,485	4,720	4,950	5,460

Note1: Cooling capacity is based on: Cooling water outlet 35℃,inlet 30℃;Chilled water out 7℃,inlet12℃.
2:Specifications are subject to change with out notice for further improvement.

TCW-360EA2D,TCW-400EA2D,TCW-500EA2D



■Sepcifications

Model		TCW-360EA2D	TCW-400EA2D	TCW-500EA2D
Power Source		3ø 380/415V 50Hz		
Cooling Capacity KW(Btu/hr)		1,266(4,320,000)	1,407(4,800,000)	1,758(6,000,000)
Dimension	Height H (mm)	2,400	2,400	2,500
	Width W (mm)	4,500	4,500	4,800
	Depth D (mm)	1,800	1,800	2,000
Foundation holes L * E (mm)		2,000*1,200	2,000*1,200	2,000*1200
380V Running Current A		495	547	686
415V Running Current A		453	501	628
Power Consumption KW		290	321	402
COP W/W		4.37	4.38	4.37
Evaporator	Type	Shell and Tube		
	Flow rate L/min	3,600	4,000	5,000
	Lost head M	6.0	8.0	9.0
	Pipe connections	8B	10B	10B
Condenser	Type	Shell and Tube		
	Flow rate L/min	4,500	5,000	6,250
	Lost head M	6.5	6.6	6.6
	Pipe connections	6B*2	6B*2	6B*2
Refrigerant control		Thermal expansion valve		
Compressor	Type	Semi-hermetic Scroll		
	Oil heater W	300*2	300*2	300*2
Capacity step %		0,25,50,75,100		
Starting method		Y-△		
Safety devices		High/Low pressure switch, Over current relay, Phase reversal protector, Relief valve Thermal interior protector, Antifreeze protector, Discharge temp. protector		
Refrigerant		R-22		
Refrigeration Oil		Nameplate in chiller		
Net weight kg		5,300	5,900	6,550
Operation weight kg		6,100	6,800	7,535

Note1: Cooling capacity is based on: Cooling water outlet 35℃,inlet 30℃;Chilled water out 7℃,inlet12℃.
2:Specifications are subject to change with out notice for further improvement.