



Overseas affiliated companies

Please address inquiries about Miura products to the nearest Miura Group company.

[JAPAN] MIURA CO., Ltd.

7 Horie, Matsuyama, Ehime 799-2696, Japan
TEL 089-979-7123
FAX 089-979-7101

[CHINA] MIURA INDUSTRIES (SUZHOU) Co., Ltd.

中華人民共和國蘇州市蘇州工業園區南前巷8番 215024
No. 8 Nanqian Lane, Suzhou Industrial Park, Suzhou, People's Republic of China. 215024
TEL 86-512-8816-8892 FAX 86-512-8816-8893
http://www.miura-cn.com

[TAIWAN] MIURA BOILER Co., Ltd.

台北市信義區基隆路2段133號4F 11053
4F NO.11053 KEELUNG.RD, SEC.2 133 TAIPEI TAIWAN
TEL 886-2-2735-9991 FAX 886-2-2735-9832
http://www.miuraz.com.tw

[SINGAPORE] MIURA SOUTH EAST ASIA Pte. Ltd.

No.3 Soon Lee Street , #03-36/37/38, Pioneer Junction, Singapore 627606
TEL 65-6465-1147 FAX 65-6465-1148

[THAILAND] MIURA INDUSTRIES (THAILAND) Co., Ltd.

32/33 12th Floor, Zone C Unit A, Sino-Thai Tower, Sukhumvit 21 Road (Soi Asok)
Klongtoey-Nua, Wattana, Bangkok 10110, Thailand
TEL 66-2-661-6354 FAX 66-2-661-7461

PT. MIURA INDONESIA

Jl. Harapan Raya Lot KK 10. Karawang International Industrial City (KIIC)
Karawang 41361, Jawa Barat, Indonesia
TEL 62-21-2936-9977 FAX 62-267-863-4888
http://www.miura.co.id

[KOREA] KOREA MIURA Co., Ltd.

大韓民國ソウル特別市永登浦區京仁路775.3-701 文來洞3街, ACE HIGHTECH CITY
701-1, 3-Dong, ACE Hightech , 775, Gyeongin-ro, Yeongdeungpo-gu, 150-972 Seoul
TEL 82-2-2671-2410 FAX 82-2-2671-0019
http://www.miura.co.kr

[CANADA] MIURA CANADA Co., Ltd.

8 Copernicus Boulevard, Brantford, Ontario N3P 1Y4 Canada
TEL 1-519-758-8111 FAX 1-519-758-5294
http://www.miuraboiler.com

[U.S.A.] MIURA NORTH AMERICA Inc.

16016 E Foothill Blvd, Irwindale, CA 91702-2812 U.S.A.
TEL 1-626-305-6622 FAX 1-626-334-7430
http://www.miuraboiler.com

[U.S.A.] MIURA MANUFACTURING AMERICA Co., Ltd.

2200 Steven B, Smith Blvd., Rockmart, GA 30153 U.S.A.
TEL 1-678-685-0929 FAX 1-678-685-0930

[MEXICO] MIURA BOILER MEXICO, S.A. DE C.V.

Calle Hacienda de Temixco, numero.28, oficina A4, Colonia Bosque de Echegaray
Municipio de Naucalpan de Juarez, C.P. 53310, Estado de Mexico
TEL 52-55-5360-5939 FAX 52-55-5373-8647

[BRAZIL] MIURA BOILER DO BRASIL, LTDA.

Rua Maria David Ganen, 50 Jardim Planalto - Jundiai, 13211-220 - S.P. Brazil
TEL 55-11-3379-7434 FAX 55-11-3379-7435

Product upgrades may be made without notice.
Please address any enquiries concerning this brochure
to your nearest Miura distributor or sales office.

Safety Precautions	In order to use the product safely, please read the Instruction Manual first.
--------------------	-------------------------------------------------------------------------------

©Export Precautions: Products in this brochure which fall under the export controls in the Foreign Exchange and Foreign Trade Act require a license from the Japanese government for export outside of Japan. If you are considering export, please consult your Miura Sales Representative.

The Best Partner of
Energy, Water and Environment



Once-Through Steam Boiler



Boiler efficiency of 98%

SI steam boilers with slim, compact design

Miura is recognized as the world's most reliable and respected brand of once-through boilers. Commanding the top share of the market for compact once-through boilers, we are proud of our boilers which demonstrate our commitment to quality and technical prowess, and we are delivering outstanding performance in a wide variety of industries. Environmentally friendly, with high boiler efficiency and low running cost,the Miura SI series is winning the satisfaction of international customers.

Features

Easy Status Checking And Operation

The operating conditions of the boiler are clearly displayed using visibly recognizable colours and messages. You can safely and easily control automatic water and steam supply with the press of a switch.

>> Alarm function

An alarm function helps to avoid unintended boiler stoppages. It is particularly useful from the perspective of preventive maintenance.



>> The panel interface supports multiple

The control panel language can be switched between English, simplified Chinese, traditional Chinese, Korean, and Japanese.

>> Heat control function

Operational data including the volume of steam and blowdown are displayed on the panel, which ensures the ability to maintain safe and stable operating conditions.

New Functions For Ever Greater Safety

>> Flame sensor with self-analysis function

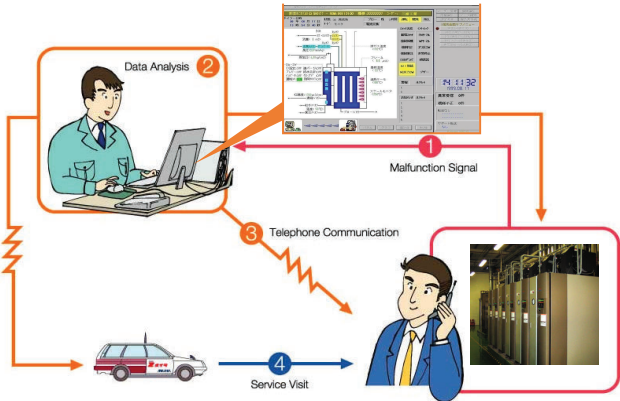
The flame sensor itself is equipped with a function that can detect any malfunction

>> High-performance steam pressure switch

A fail-safe steam pressure switch is used based on the physical phenomenon whereby a magnet loses its magnetic force when heated.

Online Maintenance Using The Communication Function

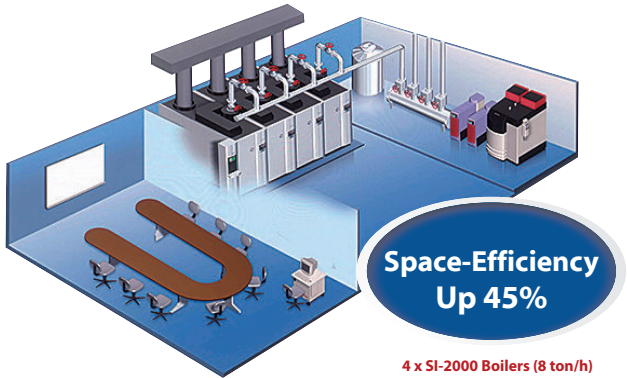
The boiler automatically alerts the maintenance centre if it detects a fault.



Space-Efficiency

Space-saving through close placement

- Significant space-savings
- High-efficiency operation with multiple boilers
- Reduces risk of breakdowns



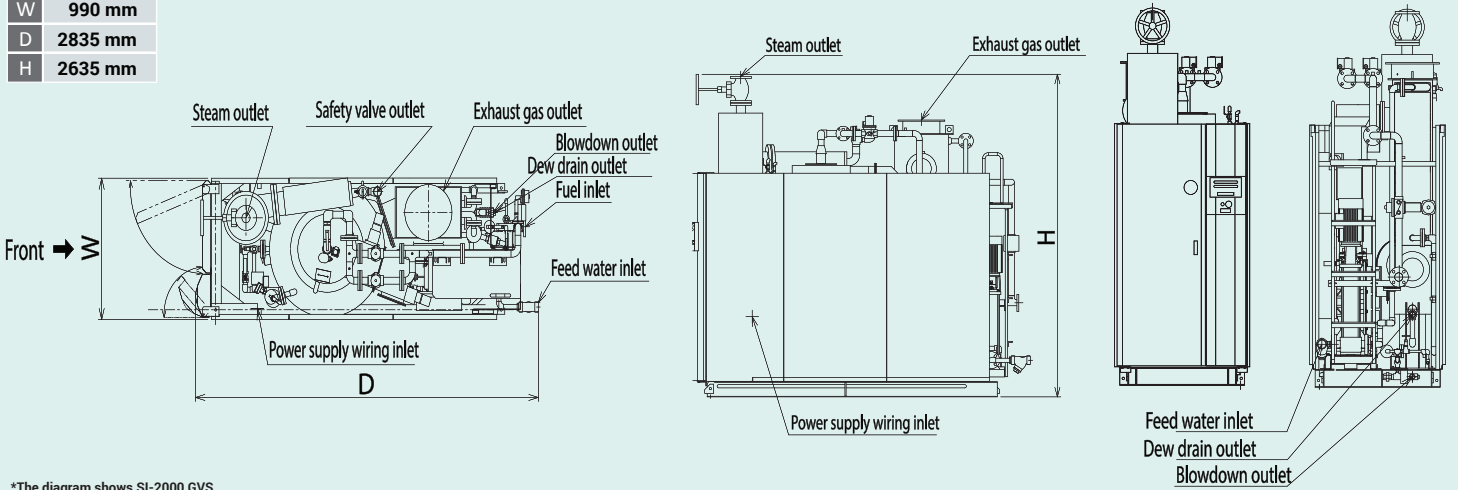
* Front View SI-2000 GVS

Basic Specification

MIURA TYPE			SI-2000GVS		REMARK
ITEM			UNIT		
Main Body					
Boiler Type			—	Once-through steam boiler	
Working Pressure			MPa	0.49—0.88	*8, *9
Equivalent Output			kg/h	2000	
Actual Output			kg/h	1680	*3
Heat Output			MW {kcal/h}	1.25 {1078000}	
Boiler Efficiency			%	98	*2
Water Content			L	138	
Fuel Consumption	Natural Gas (13A)		Nm³/h	113.5	*1, *2
	LPG	(Propane)		49.2	
		(Butane)	kg/h	99.3	
			Nm³/h	38.7	
		kg/h	100.8		
Power Supply			—	AC 380 V 50 Hz 3 phase	
Required Wire Diameter for Power Supply			mm²	5.5	*5
Power Circuit Breaker Capacity			A	60	*6
Rated Power Consumption			kW	10.4	
Max. Electrical Consumption 50Hz			kVA	13.8	
Product Weight			kg	2360	
Connection Diameter					
Steam Outlet			A	65	*4
Safety Valve Outlet				50	
Feed Water Inlet				40	
Boiler Blowdown Outlet				25	
Fuel Inlet				20	
Inspection Port				Upper: 50, Lower: 50	
Surface Blowdown Outlet				[10]	*7
Dew Drain Outlet				25	
Stack Diameter			φ mm	300	

Overall Dimensions [SI-2000 GVS]

	SI-2000GVS
W	990 mm
D	2835 mm
H	2635 mm



Flow Sheet [SI-2000 GVS]

