

*** Description:**

Air Shower is a necessary passageway for people and cargo before entering the clean room, to reduce to a minimum amount of particulate matter and contaminants by using wind pressure to blowing dust particles away when people and goods passing through.

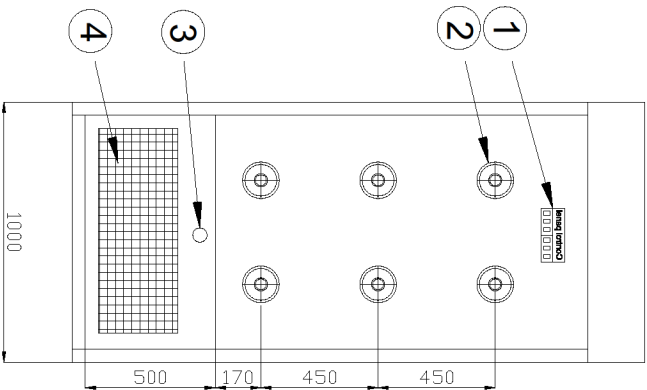
*** Technology parameter:**

MODEL		TL – AS -1000	TL – AS- 2000	TL – AS - 3000
External dimension (W X D X H) mm		1400x1000x2150	1400x2000x2150	1400x3000x2150
Internal works zone (W x D x H) mm		800x930x1950	800x1930x1950	800x2930x1950
Persons per cycle		1 - 2 persons	3 - 4 persons	5 - 6 persons
Nozzle in stainless steel		12 PCS	24 PCS	36 PCS
Wind speed (m/s)		18-25	18-25	18-25
Noise level (dBA)		< 85	< 85	< 85
Hepa Filter	Size (mm)	610 x 610 x 70	610 x 610 x 70	610 x 610 x 70
	Efficiency	99.99 %@0.3µm	99.99 %@0.3µm	99.99 %@0.3µm
	Air velocity (CMM)	24.2	24.2	24.2
	Initial resistance (pa)	249	249	249
Pre - Filter	Size (mm)	240*640 x20	240*640 x20	240*640 x20
	Efficiency	G4	G4	G4
	Efficiency	90%	90%	90%
	Initial resistance (pa)	65	65	65
Blower	Power supply	380V/50Hz	380V/50Hz	380V/50Hz
	Net power (Kw)	1.5 Kw	3 Kw	4.5 Kw

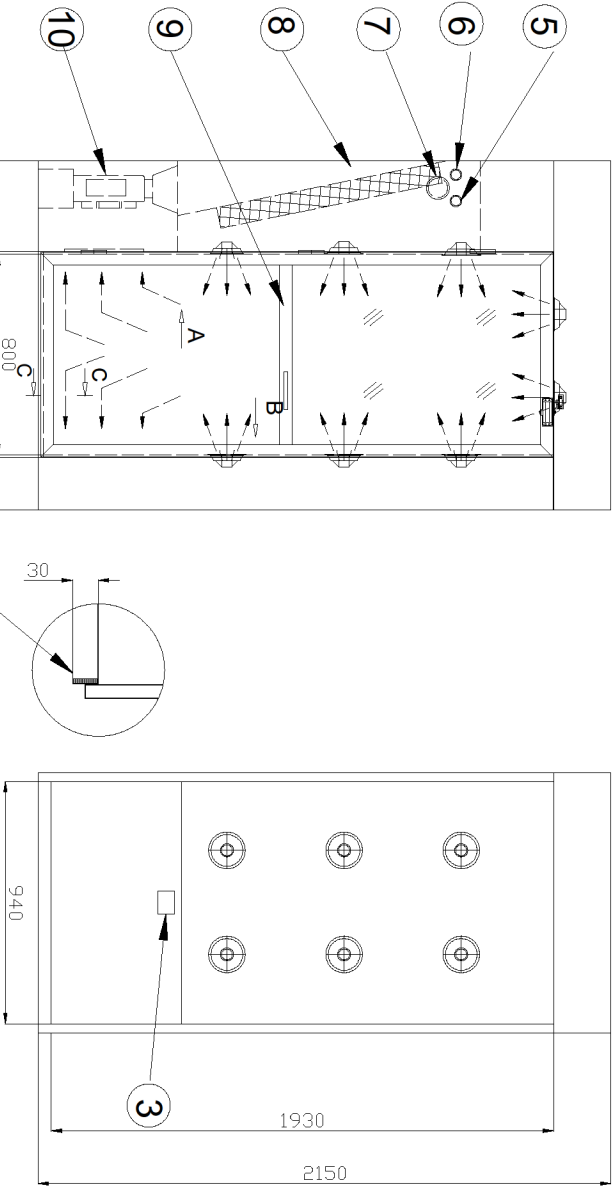


Contact:
THELONG INTERNATIONAL TECHNOLOGY CO.LTD
Tel: 0438737717
Fax: 0438726894

View A



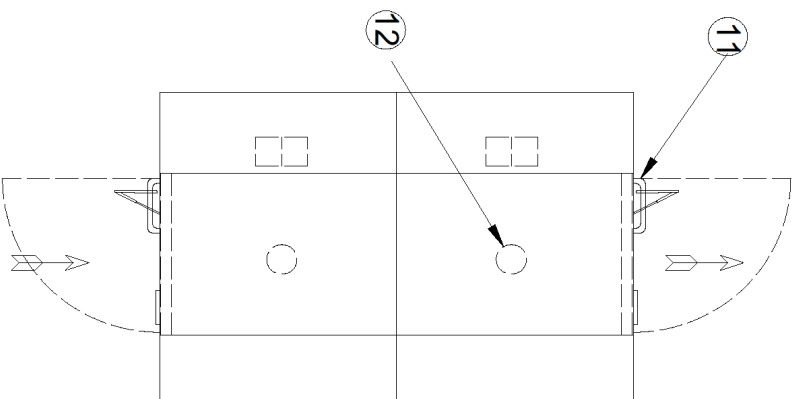
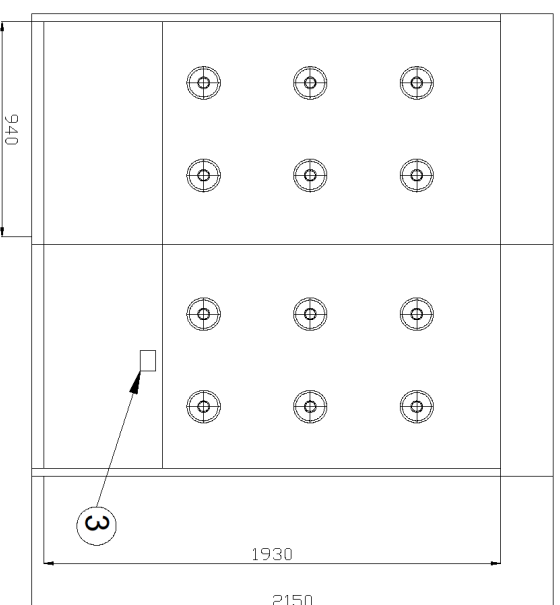
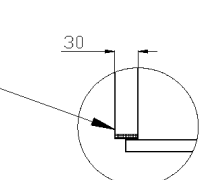
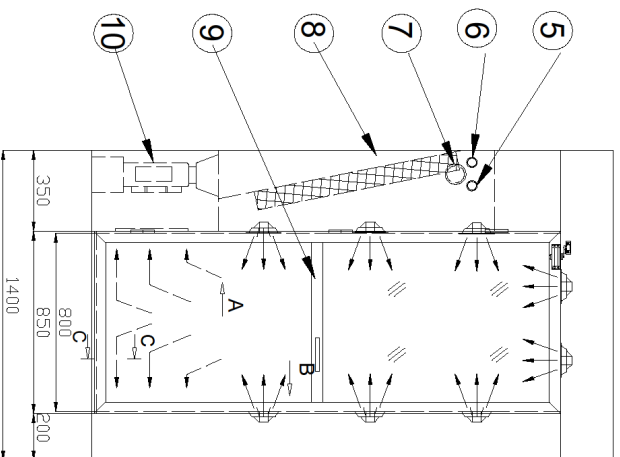
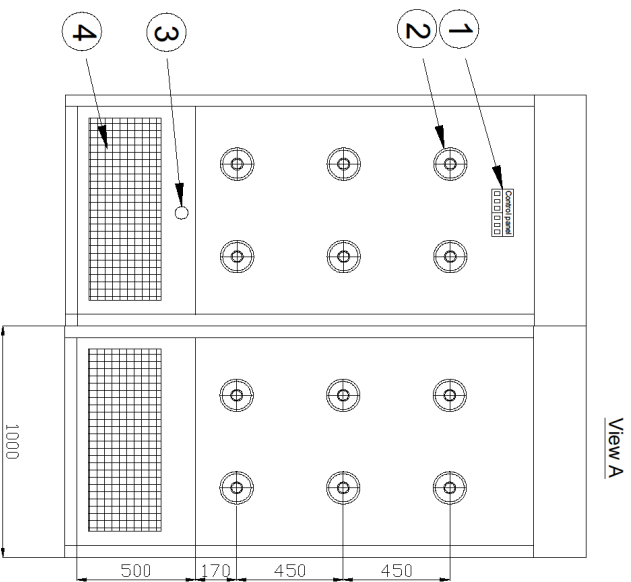
View B



Specification:
* Designed with fan (380V, 50Hz, wire 2.5 x 4 + P E)
* HEPA filter: brand HEPA filter efficiency up to 99.99% @ 0.3um
* Air shower adopts two-side wind can be achieve good air flow result

No.	Name	Materials	Quantity	Note
1	Control panel		1	
2	Nozzles	SUS 304	12	
3	Inductor		1	
4	Pre-filter	Pre filter G3	1	
5	Power light		2	
6	Working light		2	
7	Emergency stop		2	
8	Hepa filter	Hepa H13	1	
9	Door oeping		2	
10	Blower	1.5kw-380V 50hz	1	
11	Door Closer		2	
12	Light	Led	1	
13	Floor	SUS 304	1	

THE LONG INTERNATIONAL TECHNOLOGY COMPANY LIMITED				Name: Airshower			
Function	Full name	Signature	Date	AS man			
Design	Pham Tap		6/12/2013				
Check	Long N.K			Material: SUS 304			
				Weight	Quantity	Number of papers	Page No
				TL-AST/IMS	01	01	01



Specification:
 * Designed with fan (380V, 50Hz, wire 2.5 x 4 + P E)
 * HEPA filter: brand HEPA filter efficiency up to 99.99% @0.3um
 * Air shower adopts two-side wind can be achieve good air flow result

No.	Name	Materials	Quantity	Note
1	Control panel		1	
2	Nozzles	SUS 304	24	
3	Inductor		1	
4	Pre-filter	Pre filter G3	2	
5	Power light		2	
6	Working light		2	
7	Emergency stop		2	
8	Hepa filter	Hepa H13	2	
9	Door opening		2	
10	Blower	1.5KW-380V 50hz	2	
11	Door Closer		2	
12	Light	Led	2	
13	Floor	SUS 304	1	

THE LONG INTERNATIONAL TECHNOLOGY COMPANY LIMITED				Name: Airshower		<div>THE LONG INTERNATIONAL TECHNOLOGY COMPANY LIMITED</div>			
Function	Full name	Signature	Date	AS THU	Weight	Quantity	Rate		
Design	Pham Tap		01/12/2013						
Check	Long N.K								
Material: SUS 304									

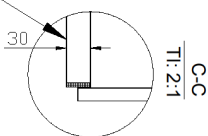
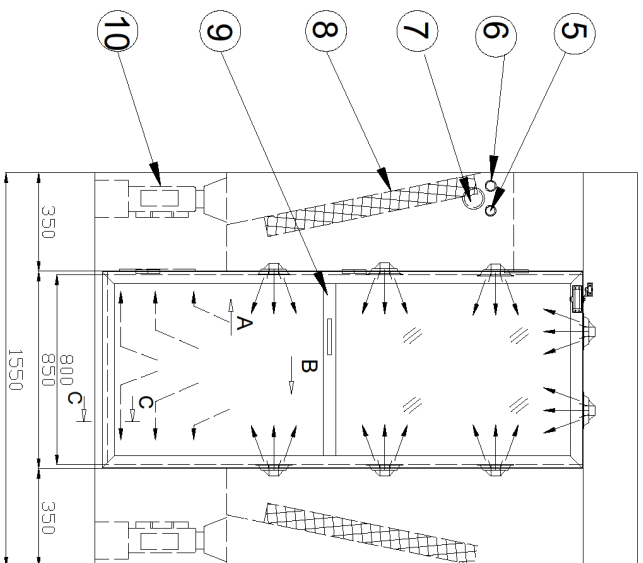
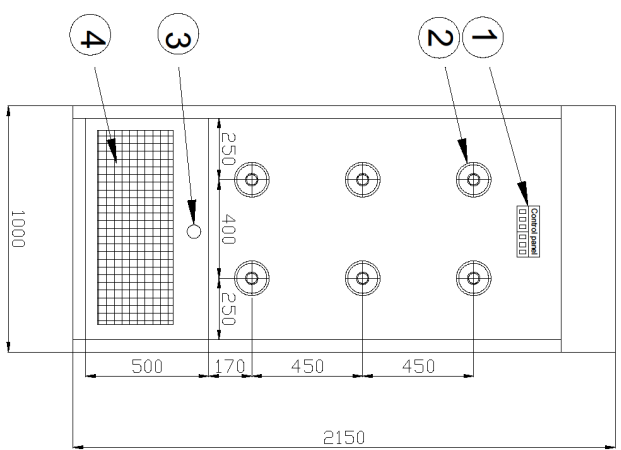
AIRSHOWER SINGLE DOOR

Detailed Product Description Air shower is a kind of purifying equipment;
Effectively reduce dust source from entering into clean area
Air shower passage is a necessary passage for person or goods entering into the clean room in order to minimize the amount of particulate contaminants. Effectively reduce dust source from entering into clean area after used, and keep clean area in normal working state.

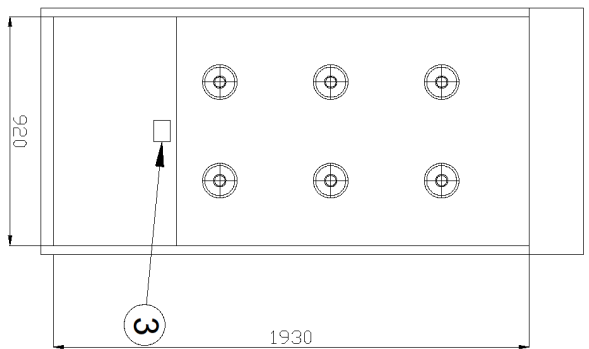


MODEL		TL – AS12 -1000	TL – AS22- 2000
External dimension (W X D X H) mm		1550x1000x2150	1550x2000x2150
Internal works zone (W x D x H) mm		800x930x1930	800x1930x1930
Persons per cycle		1-2 persons	2-4 persons
The power of fan		380V/750W(2 fan)	380V/750W (6 fan s)
Nozzle in stainless steel		24 PCS	32 PCS
Wind speed (m/s)		18-25	18-25
Noise level (dBA)		< 85	< 85
HEPA Filter	Size (mm)	610 x 610 x 70	610 x 610 x 70
	Efficiency	99.995 %@0.3µm	99.995 %@0.3µm
	Air velocity (m³/h)	1000	1000
	Initial resistance (pa)	220	220
Pre - Filter	Size (mm)	640 x 240 x20	640 x 240 x20
	Efficiency	G3	G3
	Efficiency	75%@5µm	75%@5µm
	Initial resistance (pa)	60	60
Parameter	Power supply	380V/50Hz	380V/50Hz
	Net power (Kw)	1.5 Kw	3 Kw

View A



View B

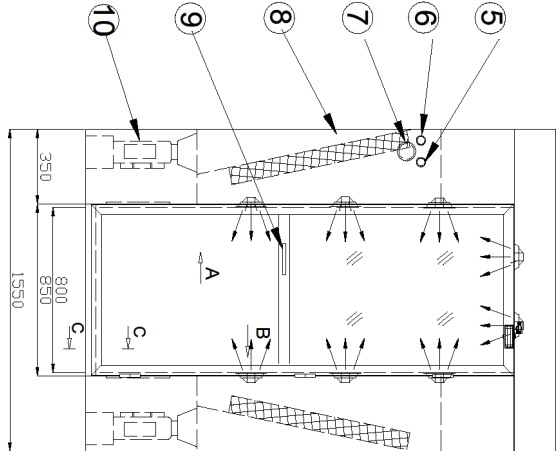
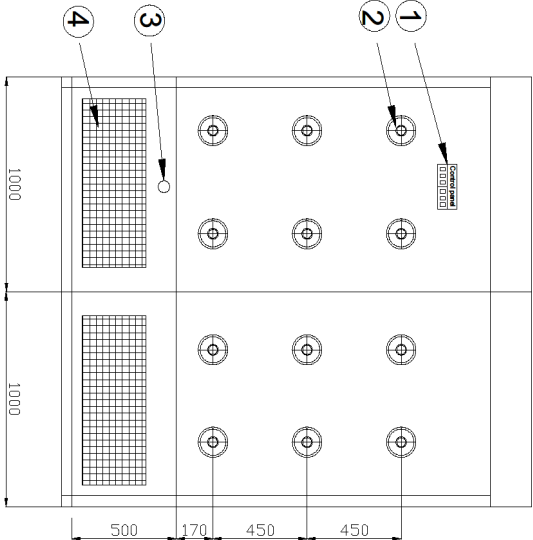


Specification:
* Designed with fan (380V, 50Hz, wire 2.5 x 4 + P E)
* HEPA filter: brand HEPA filter efficiency up to 99.99% @0.3um
* Air shower adopts two-side wind can be achieve good air flow result

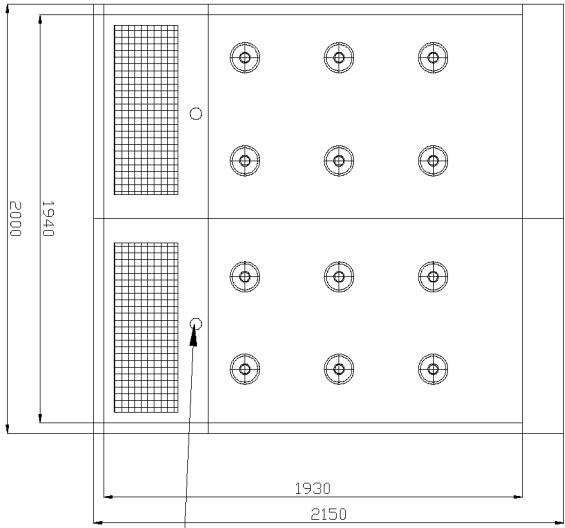
No.	Name	Materials	Quantity	Note
1	Control panel		1	
2	Nozzles	SUS 304	16	
3	Inductor		1	
4	Pre-filter	Pre filter G3	2	
5	Power light		2	
6	Working light		2	
7	Emergency stop		2	
8	Hepa filter	Hepa H13	2	
9	Door opening		2	
10	Blower	750W-380V 50hz	2	
11	Door Closer		2	
12	light	Led	1	
13	Floor	SUS 304	1	

THE LONG INTERNATIONAL TECHNOLOGY COMPANY LIMITED				Name: Airshower		THE LONG INTERNATIONAL TECHNOLOGY		
Function	Full name	Signature	Date	AS man		Weight	Quantity	Rate
Design	Pham Tap		6/12/2013					
Check	Long N.K			Material: SUS 304		Symbol	Number of papers	Page No
						TL-ASPTI-AS	01	01

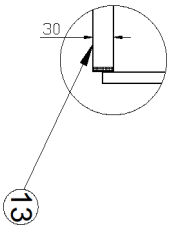
View A



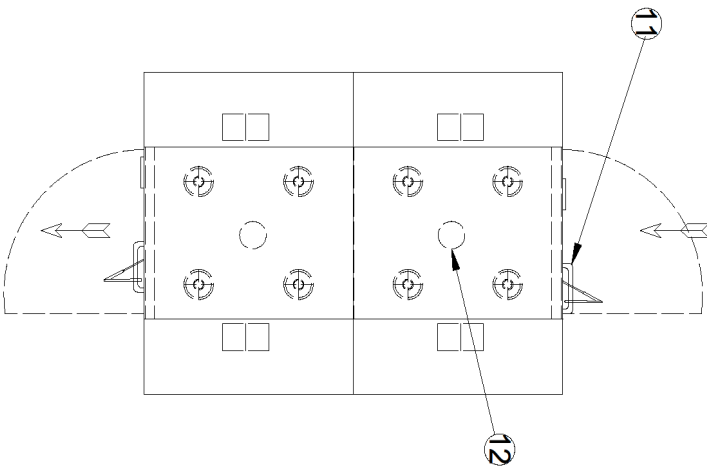
View B



C-C
TT: 2:1



Specification:
* Designed with fan (380V, 50Hz, wire 2.5 x 4 + P E)
(The connecting point is on the top)
* HEPA filter: brand HEPA filter efficiency up to 99.99% @0.3um
* Air shower adopts two-side wind can be achieve good air flow result



No.	Name	Materials	Quantity	Note
1	Control panel		1	
2	Nozzles	SUS 304	32	
3	Inductor		1	
4	Pre-filter	Pre filter G3	4	
5	Power light		2	
6	Working light		2	
7	Emergency stop		2	
8	Hepa filter	Hepa H13	4	
9	Door oeping		2	
10	Blower	750W-380V 50hz	4	
11	Door Closer		2	
12	Light	Led	2	
13	Floor	SUS 304	1	

THE LONG INTERNATIONAL TECHNOLOGY COMPANY LIMITED				Name: Airshower		THE LONG INTERNATIONAL TECHNOLOGY COMPANY LIMITED		
Function	Full name	Signature	Date	AS MUI		Weight	Quantity	Rate
Design	Pham Tap		07/12/2013					
Check	Long N.K			Material: SUS 304		Symbol	Number of papers	Page No
						TL-AS27M-S	01	01

AIRSHOWER DUOBLE DOOR

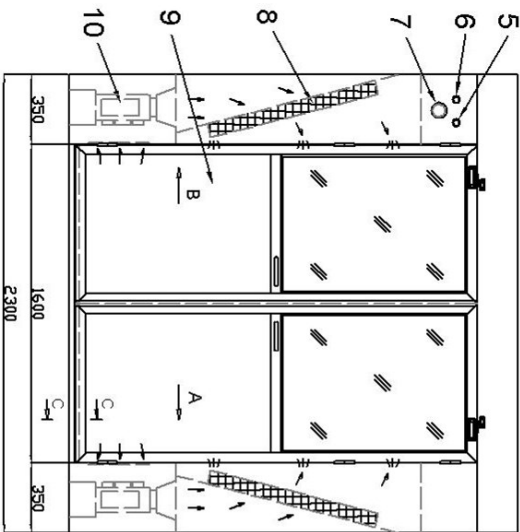
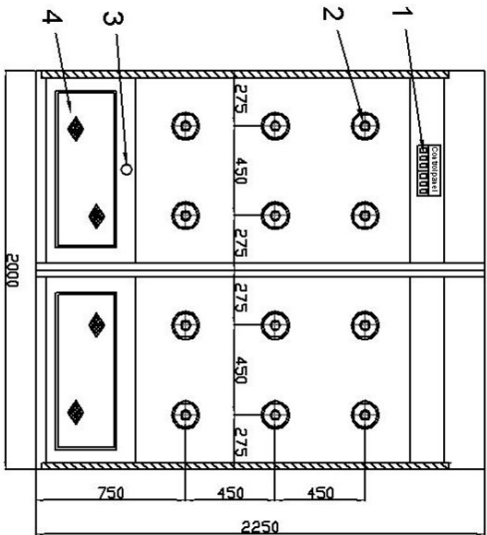
Detailed Product Description Air shower is a kind of purifying equipment;

Effectively reduce dust source from entering into clean area
Air shower passage is a necessary passage for person or goods entering into the clean room in order to minimize the amount of particulate contaminants. Effectively reduce dust source from entering into clean area after used, and keep clean area in normal working state.

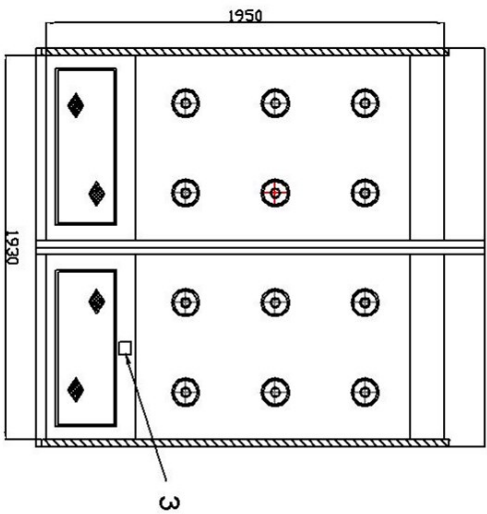


MODEL		TL – AS22 – 2000	TL – AS22 – 3000
Extetal dimension (W X D X H) mm		2300x2000x2250	2300x3000x2250
Internal works zone (W x D x H) mm		1600x1930x1950	900x1930x1950
Persons per cycle		8 persons	12 persons
The power of fan		380V/750W(4pan)	380V/750W (6 pans)
Nozzle in stainless steel		24 PCS	32 PCS
Wind speed (m/s)		18-25	18-25
Noise level (dBA)		< 85	< 85
HEPA Filter	Size (mm)	610 x 610 x 70	610 x 610 x 70
	Efficiency	99.995 %@0.3µm	99.995 %@0.3µm
	Air velocity (m³/h)	1000	1000
	Initial resistance (pa)	220	220
Pre - Filter	Size (mm)	640 x 240 x 20	640 x 240 x 20
	Efficiency	G3	G3
	Efficiency	75% @5µm	75% @5µm
	Initial resistance (pa)	60	60
Paramerter	Power supply	380V/50Hz	380V/50Hz
	Net power (Kw)	3 Kw	4.5 Kw

View B



View A



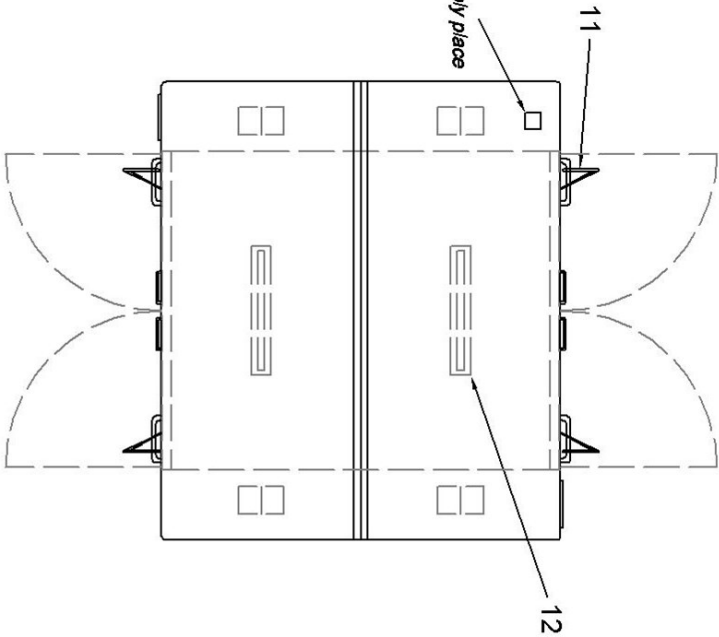
Legends:

1. Control panel 1pc (Microcomputer, Timer, Power light, Emergency stop, Rain switch, Light switch)
2. Nozzles 24 pcs
3. Indicator
4. Prefilter
5. Power light
6. Working light
7. Emergency stop
8. HEPA filter (610x610x70 mm)
9. Door opening
10. Fan 4 pcs
11. Automatic door closer
12. Light 2 pc

Specifications:

- * Air speed: >23 m/s
- * Designed with 4 sets of big volume fan (380V, 50Hz, 0.75 kw/sets)
- * (The connecting point is on the top)
- * HEPA filter: brand HEPA filter efficiency up to 99.99%@0.3um
- * Air shower adopts two-side wind can be achieve good air flow result
- * Control system: use humanistic voice prompts, E-board automatic control

Power supply place

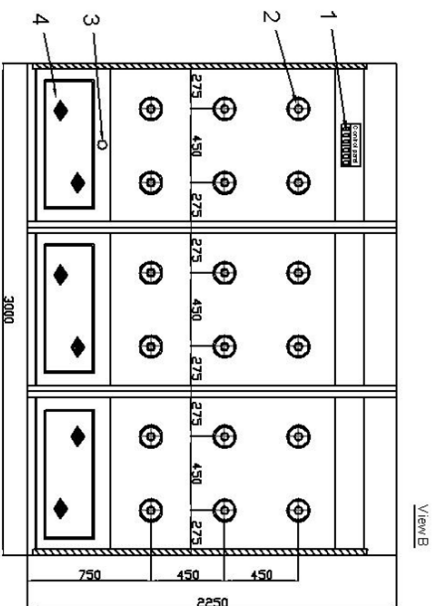


THE LONG INTERNATIONAL
TECHNOLOGY COMPANY LIMITED

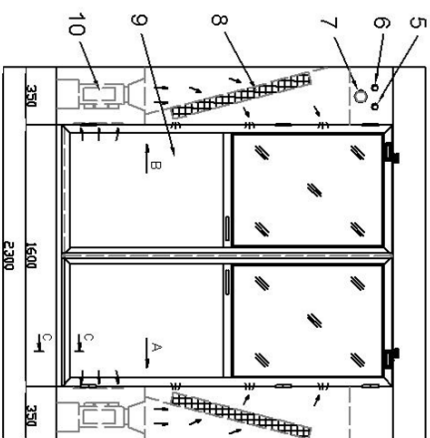
Name:
Air shower

THE LONG
INTERNATIONAL TECHNOLOGY

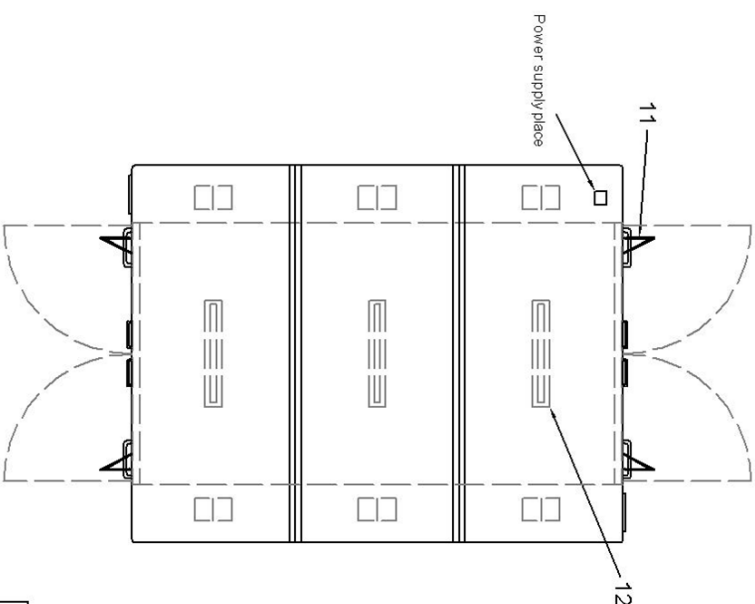
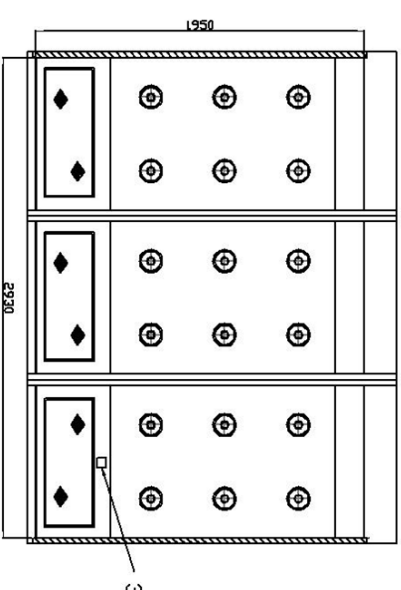
Function	Full name	Signature	Date	Weight	Quantity	Ratio
Design	Mihal.N.V				01	
Check	Long.N.K					
Material: SUS304				Symbol	Number of pieces	Page Nk
				TL-ASP-2000	01	01



View B



View A



Legend:
1: Control panel (Fan, Nozzle, Time, Power light, Emergency stop, Fan switch, Light switch)

2. Nozzles 36 pcs
3. Inductor
4. Fan
5. Power light
6. Working light
7. Emergency stop
8. HEPA filter (610x610x70 mm)
9. Door opening
10. Fan 6 pcs
11. Automatic door closer
12. Light 3 pc

Specification:
* Air speed >23 m/s
* Designed with 6 sets of big volume fan (380V, 50Hz, 0.75 kW/each)
(The controlling point is on the top)
* HEPA filter: brand HEPA filter efficiency up to 99.99% @0.3um
* Air shower adopts two-side wind can be achieve good air flow result
* Control system: uses humanistic video prompts, E-board automatic control

THE LONG INTERNATIONAL TECHNOLOGY COMPANY LIMITED				Name: Air shower			
Function	Full name	Signature	Date	Weight	Quantity	THE LONG INTERNATIONAL TECHNOLOGY COMPANY LIMITED	
Design	Initial N.V				01		
Check	Long N.K				Number of papers		

Material: SUS304				Symbol	Page No
				TL-A52-3000	01