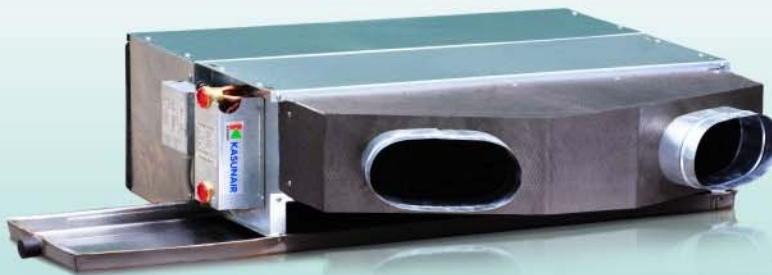
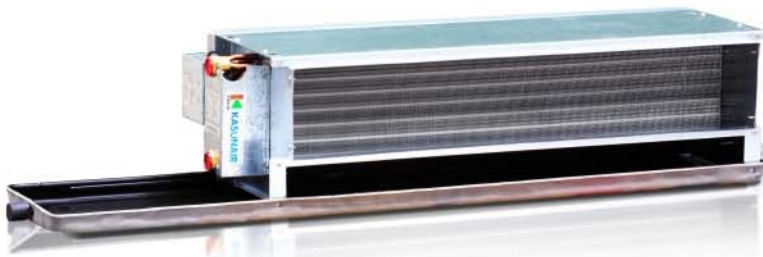




**KASUNAIR**



KASUNAIR

**SGS**

Chilled Water **F**an **C**oil **U**nit

## Product Introduction

## Chilled Water Fan Coil Unit

### ■ Ceiling Mounted Type

- Complete series of Horizontal Ceiling Conceal type Fan Coil are available, which Air Volume from 340CMH till 3400CMH, and are flexible and suitable for the use at various room spaces to create cool, quiet and comfortable living environment.

### ■ Special Features

- Horizontal Ceiling Conceal Fan Coil series are broad-spectrum, Ceiling Mounted and concealed installation is easy to collocate with interior design
- Hi/Low multi-static type is able to supply air directly or connect to duct system depends on user's require accordingly.
- 25cm height slim size, suitable for every space while easy for install and maintain.
- Specially designed S.A. Plenum for easily collocate with our fan coil is available for your option
  - Decision to the pipe connection is according to the connecting direction, Inlet/ Outlet water pipe connect to left side of S. A flange is left connect type and right connect type is contrary to the left connect type.
  - 4 Row Heating/ Cooling multi-purpose type, stainless drain-pan, special anti-corrosive aluminum fin, are available for the customize order.

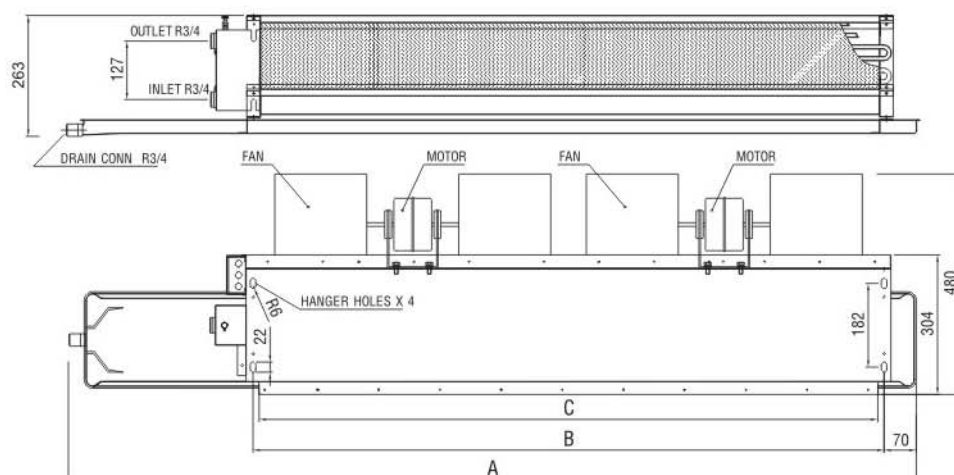


Model:

**KS F 08 C N**  
**1 2 3 4 5**

Digit 1: KASUN  
 Digit 2: Fan Coil  
 Digit 3: Size/Nominal Air flow  
 02=200 CFM

03=300CFM...  
 16=1600 CFM  
 Digit 4: Concealed  
 Digit 5: Design Sequence



Model		KSF									
		02CN	03CN	04CN	05CN	06CN	08CN	10CN	12CN	14CN	16CN
A	mm	890	890	1080	1280	1280	1510	1850	1940	2010	2130
B	mm	520	520	650	850	850	1070	1370	1500	1700	1850
C	mm	495	495	625	825	825	1045	1345	1475	1675	1825



## Structural Characterisric

### Fan coil Unit

Excellent heat transfer capability produced using high quality copper tubes with aluminium hydrophilic fins which are pressure bonded to the tubes though 14 MPa water pressure expansions to ensure fully surface contact occurrence. Brass water distributor is used for improved water flow distribution, in order to provide better heat transfer effect.



### Casing

An aesthetic outlook which comes with a rigid frame structure that is fabricated with zinc coated galvanized steel thus generates the rigidity of the unit making it hard to deform. For exposed type FCU, its cabinet is made of electro galvanized mild steel sheet through processes such as rinsing, treatment, ovening and electrostatic powder coating to ensure it is protected from corrosion and also



### Drain

No leakage die pressing surface has been coated with electrostatic powder treatment. 5mm PE thermal insulation foam is applied on the drain pan to prevent condensation and leakage from occurring. Furthermore the width and length of the drain pan has been specifically designed to accommodate the water drop from the water inlet/outlet and flow valve as a result of condensation.



### Fan Blower

Low operating noise high performance centrifugal blower is made of fire retardant ABS, which is light weighted while statically and dynamically balanced.



### Fan Motor

High efficiency, low energy consumptions, innovative vonable 3 speeds fan motor, Hight efficiency motor bearing and rubber isolator is being used to increase the motor life span while reducing noise level.



## Specification

ITEM \ MODEL		KSF										
		02CN	03CN	04CN	05CN	06CN	08CN	10CN	12CN	14CN	16CN	
Air flow		cfm	200	300	400	500	600	800	1000	1200	1400	1600
		cmh	340	510	680	850	1020	1360	1700	2040	2380	2720
Cooling Capacity		Kcal/h	1950	2500	3550	4430	5000	6300	7950	9000	10800	12500
		Btu/h	7740	9920	14090	17580	19840	25000	31550	35710	42860	49600
Heating Capacity		Kcal/h	2740	4100	6050	7560	7890	9750	12480	14320	17230	19000
Water flow		l/min	6.5	8.3	11.8	13.8	16.6	21.2	26.8	30.1	36.4	40
Head loss		Pa	80	93	200	320	440	667	347	413	520	600
Working pressure		Psi	250									
Running Current		A	0.3	0.4	0.4	0.52	0.52	0.61	0.95	1.15	1.32	1.34
Power input		W	86	89	89	117	117	173	209	259	300	302
COIL			Copper Tubes, Aluminium Split Fins									
PIPING	Water connection	inch(mm)	19.05(3/4")									
	Drain		19.05(3/4")									
MOTOR	Type		E Class Insulation, Three Speed Permanent split Capacitor Motor									
	Power Source		1φ - 50Hz - 220V									
	Quantity		1					2				
	Speed Control		3 - Stage Control (Hi, Med, Lo).									
FAN	Type		Double Inlet Forward - Curved Blades Centrifugal Fan									
	Quantity		1			2			3	4		
	Internal Static Pressure		Pa	20						30		
NET WEIGHT		Kg	15.5	16.0	18.0	21.0	21.0	24.0	34.0	35.0	39.0	41.0

Note: 1. Cooling: Entering air temp: 27°CDB; 19.5°CWB; Entering chiller water temp: 7°C leaving temp rise 5°C.  
 2. Heating: Entering air temp: 21°CDB; Entering hot water temp: 60°C.  
 3. It is intelligible not to inform you about the future change of our product design.



Taiwan Factory:  
Karo's Industrial Co., Ltd.

ISO-9001



Shanghai Factory:  
Kafos Refrigeration Co., Ltd.

**KASUN INDUSTRIAL JVC LTD**

