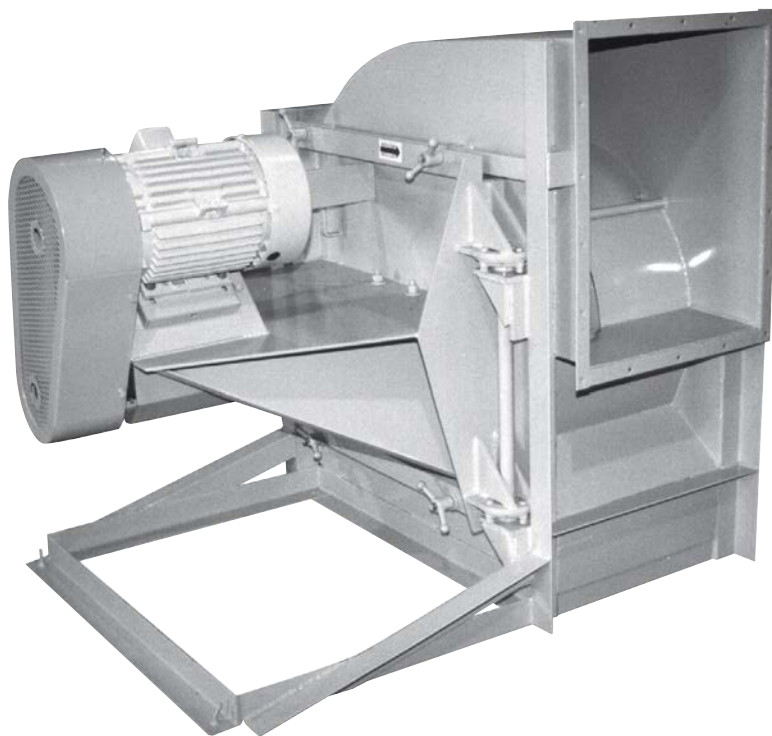


Fans & Blowers

# Twin City

Turning Air Into Solutions.



**EASY ACCESS INDUSTRIAL EXHAUST FANS**

# Reduced Down Time . . . Easy Maintenance . . .

## Swingout Fans

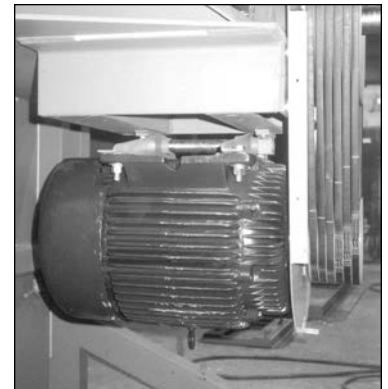
Swingout fans by Twin City Fan & Blower are the best choice when frequent cleaning and short down time are essential. Available in axial, tubular centrifugal, and scroll type centrifugal fans, TCF&B swingout fans can handle the toughest exhaust applications.

## Construction Features

- **DOOR SUPPORT.** Heavy duty flanged ball bearing hinge system provides door support without the need for a track.
- **BEARINGS.** 200,000 hour L-50 average life bearings are standard.
- **HOUSING.** Continuously welded heavy gauge construction.
- **MOTOR BASE.** Motor slide base standard on scroll swingout fans.
- **HANDLES.** Extra heavy T-handles to lock doors for a tight seal.

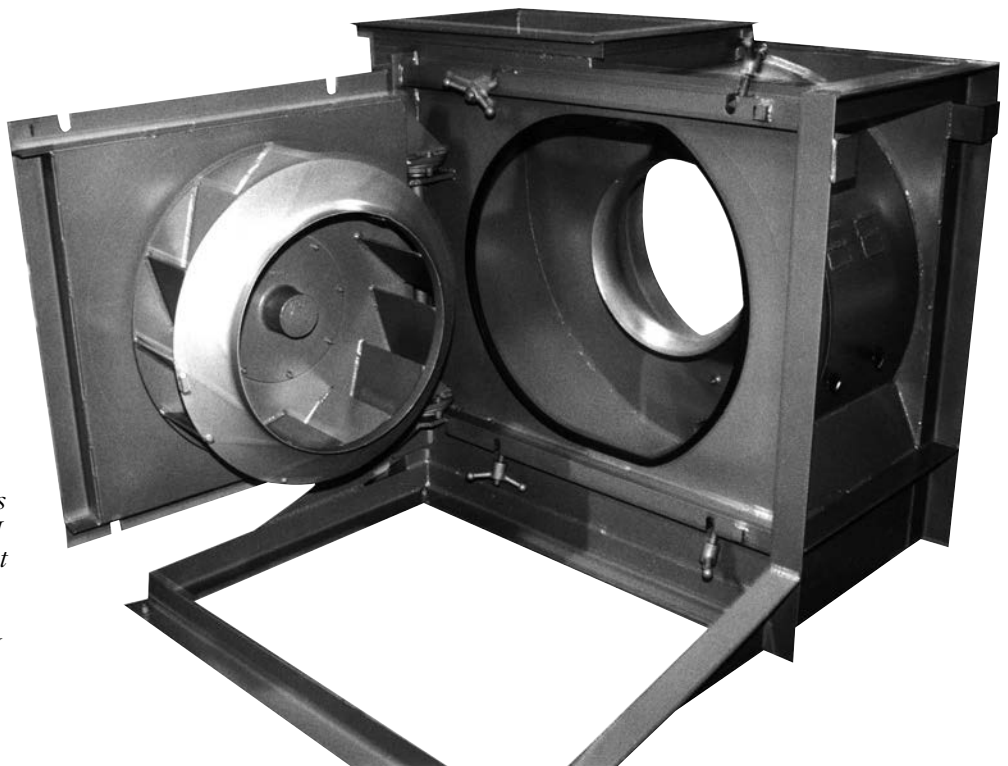


*Heavy duty ball bearings provide door support.*



*Optional pivot motor base for constant belt tension available on scroll swingout fans.*

*Backward inclined and airfoil fans are available in sizes 135 through 660 in Class I, II and III construction. The inlet funnel is removable without disturbing the ductwork. Refer to Catalog 300 for SWSI BC/BAF Backward Inclined Airfoil Fans.*



# Fast Cleaning . . . Quick Inspection . . .



*Tubeaxial, vaneaxial, and adjustable pitch vaneaxial swingout fans are available in sizes 18 through 54. Refer to Catalogs AX200 Tubeaxial, AX100 Vaneaxial, and AX300 Adjustable Pitch Vaneaxial.*



*The TSL Tubular Centrifugal Inline Fan's patented airfoil wheel reduces horsepower and sound levels. Available in sizes 182 through 490 in Class I, II, and III construction. Refer to Catalog 1001 for TSL Tubular Centrifugal Inline Fans.*

*\*Patent No. 5,171,128 (wheel). Patent No. 4,775,294 (swingout).*

## Swingout Accessories & Options

- Steel, aluminum and stainless steel construction available.
- FRP plastic inlet funnels available when aluminum is not suitable for spark resistant construction.
- Removable bearing cover plate is optional on axial swingout fans.
- Special coatings are available for corrosion resistance.
- OSHA belt guard available for all swingout fans.



*Optional two-piece clamshell weather cover available on axial and tubular centrifugal swingout fans.*

# Less Labor . . . Accelerated Repairs . . .

## Clamshell Fans

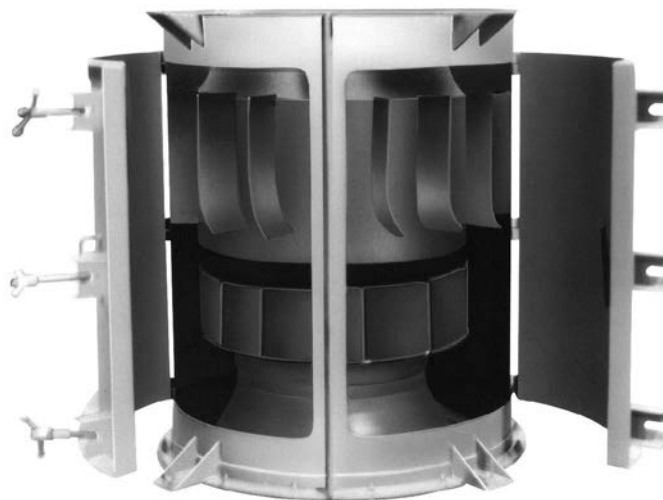
Clamshell fans by Twin City Fan & Blower offer many of the advantages of swingout fans at a reduced cost. On axial fans one of the two access doors is wide enough for wheel removal. Both axial and centrifugal clamshell fans have removable bearing covers as standard.



*All clamshell fans feature removable bearing covers.*



*Tubeaxial, vaneaxial, and adjustable pitch vaneaxial clamshell fans are available in sizes 18 through 72. Refer to Catalogs AX200 Tubeaxial, AX100 Vaneaxial, and AX300 Adjustable Pitch Vaneaxial.*



*TSL tubular centrifugal clamshell fans are available in sizes 122 through 600 in Class I, II, and III construction. Refer to Catalog 1001 for TSL Tubular Centrifugal Inline Fans.*



## Twin City Fan & Blower

*A Twin City Fan Company*

5959 Trenton Lane • Minneapolis, MN 55442-3237  
Phone (763) 551-7600 • Fax (763) 551-7601 • [www.tcf.com](http://www.tcf.com)

