

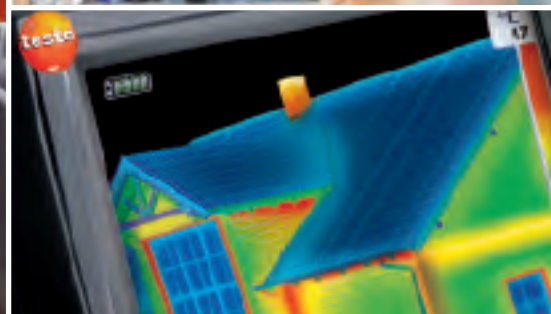
We measure it. **testo**



# HVAC/R Test Products

Over 50 years of high performance measurement experience

- Refrigeration
- Humidity
- Visual Inspection
- Air Flow
- IAQ
- Temperature
- Pressure
- Combustion
- Thermal Imaging



**testo.com** (800) 227-0729



# From sales, to installation, to service...

**Testo has the tools to help you  
measure your way to higher profits.**

- Refrigeration
- Humidity
- Visual Inspection
- Air Flow
- IAQ
- Temperature
- Pressure
- Combustion
- Thermal Imaging



**For more than 50 years testo has  
been a world leader in the design and  
manufacture of precision instrumentation.**

Whether you are measuring combustion gases, air, or performing visual inspections, testo has engineered the accuracy of our reference class instruments into our HVAC/R products. We also back our quality with the **longest warranties in the industry!**

Testo instruments are designed for use everyday by sales, installation and service professionals to help you set your business apart from your competitors. Testo helps you:

- **Show your customers how their HVAC/R system is performing**
- **Certify new systems are installed to ensure highest performance**
- **Build customer relationships by providing service test reports**

Testo has a **complete service and calibration department** dedicated to helping you maintain your instruments in peak working order.



We measure it.

testo

## Testo instruments – accurate, rugged and reliable.

Testo is a global manufacturer of HVAC/R, critical HVAC, refrigeration, airflow, and environmental monitoring instruments for markets as diverse as chemical, food service and production, pharmaceutical and biotech, and residential HVAC suppliers.

Our product line includes a large variety of temperature measuring instruments, such as dataloggers, air velocity meters, humidity and dew point meters, refrigeration service analyzers, multi-function instruments, stack gas analyzers and air emission monitors, water analyzers, tachometers, sound, pressure and light meters, and thermal imagers.



[testo.com](http://testo.com) (800) 227-0729

## Air Conditioning and Refrigeration Analysis

Digital AC and Refrigeration System Analyzers ..... 4

## Combustion and Heating System Analysis

Combustion Analyzers ..... 6  
Carbon Monoxide (CO) Instrument .. 10  
Gas Leak Detectors..... 10  
Smoke Spot Testing ..... 11

## Airflow / IAQ / Pressure

Indoor Climate Measurement..... 12  
HVAC Performance Test Kit ..... 14  
Airflow and Pressure Instruments..... 16  
IAQ Test Instruments ..... 18

## Humidity / Moisture

Thermohygrometer ..... 22  
Humidity Stick ..... 23  
Pocket PRO Thermohygrometer ..... 23

## Temperature: IR / Non-Contact

Temperature IR / Non-Contact..... 24

## Pocket PRO Products

Pocket PROs Features & Details..... 26

## Visual Inspection

Video Inspection Scope..... 29

## Thermal Imaging

Thermal Imaging Cameras..... 30

## Wireless Environmental Monitoring

Saveris™ ..... 34  
Data Loggers..... 35

**Additional Products** ..... 36

**Index by Model Number** ..... 38



# Refrigeration System Analyzers

testo 550, 557 & 570



Testo Refrigeration System Analyzers (RSA) are high performance instruments that accurately perform temperature and pressure measurements in seconds.



**testo 557**  
With built in vacuum gauge



**testo 570**  
Vacuum printing, datalogging, and reporting



**testo 550**

These instruments provide fast, real-time superheat and subcooling readings for **39+ profiles** in real-time. Built rugged for the field, testo RSAs give you the accuracy and repeatability you've come to expect from testo. Performance, Value and Speed...Cool.

## Key Points

- Real-time superheat and subcooling readings
- Simultaneous digital readout of temperatures and pressures
- Pipe Clamp Temperature Probe (0.2 – 2.5" diameter)
- Built-in magnifying sight glass
- Two NTC temperature probe inputs
- Fast response time
- Compact design for ease-of-use transport and setup
- Large easy to read back-lit display
- Hardened housing that protects the analyzer
- Ambient temperature and barometric pressure compensated
- Rugged case
- Aluminum valve block
- Temperature compensated tightness test
- Surface temperature compensation factor
- Heat pump mode

**testo.com** (800) 227-0729



### testo 570

- Three probes can be simultaneously connected
- Integrated, robust vacuum measurement
- Four-way valve block
- Mini-USB connection for power supply and PC-communication
- 40 refrigerant profiles included, can be customer-updated via EasyKool software
- IR connection for testo printer
- Direct printout on site with testo wireless fast printer
- Digital vacuum sensor for readings down to 80 microns

### testo 557

- Built-in vacuum gauge
- Robust valve block with four connections and built-in sight glass
- Two temperature probe inputs for simultaneous real-time calculation of superheat and subcooling
- Readings are displayed within seconds
- Compact design for ease of use, transport, and setup
- Large easy to read back-lit display
- Robust housing that protects the analyzer
- 40 refrigerant profiles stored eliminating the use of PT charts

### testo 550

- Two-way aluminum valve block with 3 x 1/4" SAE connections
- 39 refrigerant profiles built in for automatic PT calculations
- Vacuum indication
- One button MIN/MAX/HOLD

### Technical Data

|                                     | testo 550                                      | testo 557                                      | testo 570                                      |
|-------------------------------------|--|--|--|
| <b>Operating temp.</b>              | 14° to 122 °F                                  | -4° to 122 °F                                  | -4° to 122 °F                                  |
| <b>Storage temp.</b>                | -4° to 140 °F                                  | -4° to 140 °F                                  | -4° to 140 °F                                  |
| <b>Battery life</b>                 | approx. 150 hr (w/o illumination)              | approx. 150 hr (w/o illumination)              | approx. 40 hr (w/o illumination)               |
| <b>Dimensions</b>                   | 8 x 4.5 x 2.5 in.                              | 11 x 5.5 x 3 in.                               | 11 x 5.5 x 3 in.                               |
| <b>Pressure media</b>               | CFC, HFC, N, H <sub>2</sub> O, CO <sub>2</sub> | CFC, HFC, N, H <sub>2</sub> O, CO <sub>2</sub> | CFC, HFC, N, H <sub>2</sub> O, CO <sub>2</sub> |
| <b>Pressure meas. range</b>         | -14.7 to 725 psi                               | -14.7 to 725 psi                               | 0 to 725 psi                                   |
| <b>Pressure accuracy (at 72 °F)</b> | ±0.75 % fs (± 1 digit)                         | ±0.5 % fs (± 1 digit)                          | ±0.5 % fs (± 1 digit)                          |
| <b>Pressure resolution</b>          | 0.1 psi / 0.01 bar                             | 0.1 psi / 0.01 bar                             | 0.1 psi / 0.01 bar                             |
| <b>Measuring range</b>              | -58° to 302 °F                                 | -58° to 302 °F                                 | -58° to 302 °F                                 |
| <b>Temp. accuracy (at 72 °F)</b>    | ±1 °F (± 1 digit)                              | ±1 °F (± 1 digit)                              | ±1 °F (± 1 digit)                              |
| <b>Temp. resolution</b>             | 0.1 °F, 0.1 °C                                 | 0.1 °F, 0.1 °C                                 | 0.1 °F, 0.1 °C                                 |
| <b>Probe connections</b>            | 2x plug-in (NTC)                               | 2x plug-in (NTC)                               | 3x plug-in (NTC)                               |
| <b>Refrigerants</b>                 | 39   | 40   | 40   |
| <b>Printer</b>                      | -  | -  | IR printer                                     |
| <b>Data store in instrument</b>     | -  | -  | Up to 72 hrs recording                         |
| <b>Optional software</b>            | -  | -  | EasyKool                                       |

### Ordering Information

|   | testo 550 Kit | testo 550 Kit | testo 557 Kit | testo 570 Kit |
|---|---------------|---------------|---------------|---------------|
| <b>Part Number</b>                            | 0563 5505     | 0563 5506     | 0563 5572     | 0563 5703     |
| <b>Large Carry Case</b>                       |               | X             | X             | X             |
| <b>Pipe Clamp Probe (0.2 - 2.5" diameter)</b> | X             | X (2)         | X (2)         | X (2)         |
| <b>IR Printer/Spare Paper</b>                 | —             | —             | —             |               |
| <b>PC Software/USB Cable</b>                  | —             | —             | —             | X             |
| <b>Ammonia Adapter</b>                        |               |               |               |               |

### Accessories (Included with some kits)

|  | Part Number |
|--|-------------|
| 550/557 Printer with 7 rolls of paper.....   | 400563 5604 |
| 570 fast printer w/ wireless IRDA .....  | 0554 0549   |
| Wireless Handle for Plug-in Probe Heads .....  | 0554 0191   |
| Power Supply – 5VDC, 500mA (for 567/570).....  | 0554 0447   |
| Velcro Pipe-wrap probe (10 ft. cable).....   | 0609 5602   |
| Pipe-clamp probe (1/4" to 2.5", 10 ft. cable) .....  | 0609 5605   |
| 20/200 Clamp-on Amp meter .....  | 0554 5607   |
| EasyKool software (for 567/570 only) .....   | 0554 5604   |
| Ammonia adapter.....   | 0563 3165   |
| Thermal Printer Paper (10 year legibility).....  | 0554 0568   |
| Air Probe, NTC tip dia. .2", -58° to 257 °F, 3.9 ft. cable.....                                      | 0613 1712   |
| Waterproof NTC surface probe for flat surfaces, -58° to +302 °F .....                                | 0613 1912   |
| Pipe wrap NTC probe with Velcro, for pipe diameter up to 3", NTC, -58° to +160 °F, 5 ft. cable ..... | 0613 4611   |
| Clamp probe (NTC) .....  | 0613 5505   |

### 570 Probes

|   | Part Number |
|---|-------------|
| Current Probe with switchable measuring range.....      | 0554 5607   |
| Oil Pressure Probe for pipe dia. .24" to 1.37" .....    | 0638 1742   |
| Pipe Clamp Probe (NTC) for pipe dia. .2" to 2.56" ..... | 0613 5605   |

# Combustion Efficiency Analyzer

## testo 327-1



This sturdy, lightweight analyzer is rugged and reliable.



testo  
327-1

This basic efficiency analyzer is designed for heating technicians installing or servicing burners, boilers, furnaces, and other combustion appliances to ensure each system's safe operation and efficiency. **This sturdy, lightweight analyzer is rugged and reliable with durable sensors that come standard with a three-year warranty – the best in class!** The 327-1 operates longer in the field with minimal routine maintenance. Once every three to four years simply order a do-it-yourself sensor service kit and supplies for replacement in the field, not in the factory!



### Key Points

- Three-year sensor warranty
  - Four-line display
  - Five hr Li-Ion rechargeable battery
  - Collect additional test data for a single report
  - Generate reports with IR printer (optional)
  - Rugged single line probe connection
  - Pre-programmed with eight fuels
- Includes BioHeat® 5 fuel code

*"Remember, testo offers expert calibration services for all your instruments."*





All testo combustion analyzers use CO sensors filtered for Nitric Oxide (NO) gas found in most flue gas. Unfiltered CO sensors can lead to reading errors of 25% or more.



#### Technical Data

|                                |  |
|--------------------------------|--|
| <b>O<sub>2</sub> (Oxygen)</b>  | Range: 0 to 21%<br>Resolution: 0.1%                              |
| <b>CO (Carbon Monoxide)</b>    | Range: 0 to 4,000 PPM<br>Resolution: 1 PPM                       |
| <b>Temperature</b>             | Range: -40° to 932 °F<br>Resolution: 0.1 °F                      |
| <b>Pressure (Differential)</b> | Range: +/- 80" WC<br>Resolution: 0.01" WC                        |
| <b>Pressure (Draft)</b>        | Range: +/- 80" WC<br>Resolution: 0.01" WC                        |
| <b>Fuel Codes</b>              | Natural Gas, Light Oil, Heavy Oil, Propane, Butane, Kerosene     |
| <b>Calculates</b>              | Combustion Efficiency, Excess Air, CO <sub>2</sub> , CO-Air Free |
| <b>Operating temp. range</b>   | -23° to 113 °F   |
| <b>Storage temp. range</b>     | -4° to 120 °F  |
| <b>Dimensions</b>              | 8.5 x 2.7 x 1.9 in.  |
| <b>Weight</b>                  | 1.1 lbs.   |
| <b>Battery</b>                 | Li-Ion rechargeable battery (5 hrs)                              |
| <b>Power Supply</b>            | 120 VAC, NA Plug   |

#### Ordering Information

|   | 327-1 Kit   | 327-1 Kit                 | 327-1 Kit                   | 327-1 Kit                     |
|---|-------------|---------------------------|-----------------------------|-------------------------------|
| Part Number   | 400563 3271 | 0563 3203 72<br>Basic Kit | 0563 3203 71<br>Printer Kit | 400563 3274<br>Smoke Test Kit |
| <b>O<sub>2</sub></b>  | X           | X                         | X                           | X                             |
| <b>CO</b>   | X           | X                         | X                           | X                             |
| <b>Draft<br/>Pressure,<br/>Stack<br/>Temperature</b>                    | X           | X                         | X                           | X                             |
| <b>Efficiency,<br/>Excess Air,<br/>CO<sub>2</sub>, CO Air-<br/>Free</b> | X           | X                         | X                           | X                             |
| <b>Power<br/>Supply</b>   | X           | X                         | X                           | X                             |
| <b>Spare<br/>Particle<br/>Filters</b>                                   | X           | X                         | X                           | X                             |
| <b>System Case</b>  |             | X                         | X                           | X                             |
| <b>Printer</b>  |             |                           | X                           | X                             |
| <b>Smoke Spot<br/>Tester</b>  |             |                           |                             | X                             |

#### Accessories

|   | Part Number |
|---|-------------|
| Printer with six rolls of paper (included with some kits) ..... | 400563 5604 |
| Smoke spot tester kit.....                                      | 0554 0307   |
| Adapter for differential pressure testing .....                 | 0554 1203   |
| Hose extension - 9 ft. ....                                     | 0554 1202   |
| Fast IR Printer .....   | 0554 0549   |



# Advanced Combustion Analyzer

## testo 330-2G LL



This is combustion analysis without confusion! The full color graphic display allows graphic visualization instead of watching numerical values.



testo  
330-2G LL

Self-explanatory graphic curves, intuitive symbols and a clear color display facilitate understanding of the measurement data. Wireless Bluetooth® available with the 330-2G LL. A complete combustion analyzer for advanced heating technicians with **four-year sensor warranty!**

**330-1G LL Measures:** Temp., Draft, O<sub>2</sub>, CO, Efficiency, CO<sub>2</sub>, CO low, Ambient CO, Gas Leakage, Ambient CO<sub>2</sub>

**330-2G LL Measures:** Temp., Draft, O<sub>2</sub>, CO, Efficiency, CO<sub>2</sub>, CO low, Ambient CO, Gas Leakage, Ambient CO<sub>2</sub>



### Key Points

- Four-year sensor warranty (O<sub>2</sub>, CO) (330G LL)
- Eight-line or four-line display (selectable)
- 10 hr. Li-Ion rechargeable battery
- “i” button for self diagnostics
- Plug and play sensor service
- Store test data for future reference (500,000 sets)
- Download data sets to a PC (with optional software)
- Rugged single line probe connection
- Upgradeable probe (length, high-temp and more)
- Upgradeable to measure NO and calculate (NOx)
- Expand testing capability with optional probes (CO<sub>2</sub>, ambient CO, gas leak)
- USB connectivity



## Accessories (Included with some kits)

|  | Part Number |
|--|-------------|
| Standard Smoke Pump Test Kit<br>(includes scale, filter paper and lubricant) ... | 0554 0307   |
| Fast IR Printer .....  | 0554 0549   |
| Li-Ion charger .....   | 0554 1103   |
| Ambient CO Probe.....  | 0632 3331   |
| Gas Leak Probe.....  | 0632 3330   |
| Ambient CO <sub>2</sub> Probe<br>(requires 0430 0143 connection cable) .....     | 0632 1240   |
| Differential temperature Adapter.....  | 0554 1203   |
| Adapter for pressure testing.....  | 0554 1203   |
| Adapter for Differential temp. (2 probes) .....                                  | 0554 1204   |
| Hose extension - 9 ft. ....  | 0554 1202   |
| 13" Probe shaft, t max=1832 °F (330).....  | 0554 8764   |
| 28" Probe shaft, t max=1832 °F.....  | 0554 8765   |

## Sensor Upgrade Modules

|   | Part Number |
|---|-------------|
| 330-1 LL / 330-2 LL:<br>NO upgrade module<br>(0-3000 ppm, high range, 1 ppm res.).....            | 0554 3922   |
| 330-1 LL / 330-2 LL:<br>NO low upgrade module<br>(0-300 ppm, low range, 0.1 ppm res.).....        | 0554 3931   |
| 330-2 G LL:<br>NO upgrade module<br>(0-3000 ppm, high range, 1 ppm res.)<br>(G series only) ..... | 0554 2151   |

## Technical Data

|   | 330-1G LL (Residential)  | 330-2G LL (Commercial)   |
|---|--|--|
| <b>O<sub>2</sub> meas. Range Accuracy</b> | 0 to 21%<br>±0.2 %   | 0 to 21%<br>±0.2 %   |
| <b>CO meas. Range Accuracy</b>            | 0 to 4,000 ppm<br>±200 ppm (0 to 400 ppm)<br>±5% of reading<br>(401 to 1,000 ppm)<br>±10% of reading<br>(1,001 to 4,000 ppm) | 0 to 8,000 ppm<br>Dilution on CO up to 30,000 ppm<br>±10 ppm (0 to 200 ppm)<br>±5% of reading<br>(201 to 2,000 ppm)<br>±10% of reading<br>(2,001 to 8,000 ppm) |
| <b>NO (optional)</b>                      | 0 to 3,000 ppm   | 0 to 3,000 ppm   |
| <b>CO<sub>low</sub> (optional)</b>        | 0 to 500 ppm   | 0 to 500 ppm   |
| <b>Draft measurement range</b>            | -4 to 16 "H <sub>2</sub> O<br>(998 to 3,985 Pa)  | -4 to 16 "H <sub>2</sub> O<br>(0 to 80 "H <sub>2</sub> O)  |
| <b>CO<sub>2</sub> (calculated)</b>        | 0 to CO <sub>2</sub> max   | 0 to CO <sub>2</sub> max   |
| <b>Temperature meas. range</b>            | - 40° to 1,832 °F  | - 40° to 1,832 °F  |
| <b>Efficiency</b>                         | 0 to 100%  | 0 to 100%  |
| <b>Operating temp. range</b>              | 23° to 113 °F  | 23° to 113 °F  |
| <b>Storage temp. range</b>                | -4° to 122 °F  | -4° to 122 °F  |
| <b>Power supply</b>                       | Rechargeable battery 3.7V, 2.6 Ah  | Lithium Ion rechargeable battery, AC 6.3V/1.2A   |
| <b>Dimensions</b>                         | 10 x 3.5 x 2.5 in.   | 10 x 3.5 x 2.5 in.   |
| <b>Weight</b>                             | 1.32 lb.   | 1.5 lb.  |
| <b>Memory</b>                             | 500,000 readings   | 500,000 readings   |
| <b>Display</b>                            | Color graphic (240 x 320 pixels)   | Color graphic (240 x 320 pixels)   |
| <b>Battery charge time</b>                | >10 hours  | >10 hours  |

## Ordering Information

|  | 330-1G LL Kit | 330-1G LL Kit | 330-1G LL Kit | 330-1G LL Kit | 330-1G LL Kit | 330-2G LL Kit  | 330-2G LL Kit  |
|--|---------------|---------------|---------------|---------------|---------------|----------------|----------------|
| <b>Part Number</b>   | 0563 3371 70  | 0563 3371 75  | 400563 3303   | 400563 3304   | 400563 3305   | 0563 3372 71   | 400563 3372    |
| <b>O<sub>2</sub></b>                                       | X             | X             | X             | X             | X             | X              | X              |
| <b>CO</b>  | X             | X             | X             | X             | X             | H <sub>2</sub> | H <sub>2</sub> |
| <b>NO</b>  |               |               |               |               |               |                | X              |
| <b>NOx Calculation</b>                                     |               |               |               | X             |               |                | X              |
| <b>Draft Pressure, Stack Temp.</b>                         | X             | X             | X             | X             | X             | X              | X              |
| <b>Efficiency, Excess Air, CO<sub>2</sub>, CO Air-Free</b> | X             | X             | X             | X             | X             | X              | X              |
| <b>Power Supply</b>  | X             | X             | X             | X             | X             | X              | X              |
| <b>Spare Particle Filters</b>                              | X             | X             | X             | X             | X             | X              | X              |
| <b>System Case</b>   | X             | X             | X             | X             | X             | X              | X              |
| <b>Printer</b>   |               | X             | X             | X             | X             |                |                |
| <b>Smoke Tester</b>  |               |               | X             |               |               |                |                |
| <b>Memory</b>  | X             | X             | X             | X             | X             | X              | X              |
| <b>EasyHeat Software</b>                                   |               |               |               |               | X             |                |                |
| <b>Auto CO Dilution</b>                                    |               |               |               |               |               | X              | X              |
| <b>Bluetooth capability</b>                                | -             | -             | -             | -             | -             | 0              | 0              |

Bluetooth option is available with the 330-2G LL at time of purchase.

- = Not available. Most accessories are available / compatible unless listed with a "-". H2 = CO sensor with Hydrogen Compensation. H1 = High range sensor (0-3,000 ppm)

# Carbon Monoxide (CO) Instrument

## testo 317-3



The 317-3 accurately measures low-level, ambient CO.

Critical measurements are assured because the **reference zero cannot be compromised** and the **precision sensor detects even the slightest concentrations**. Ensure your meter reads correctly with the internal SELF-CHECK calibration verification.

### Key Points



- “True-zero”
- SELF CHECK function verifies accurate CO response
- Three year sensor warranty

#### Technical Data

|                      |                |
|----------------------|----------------|
| CO (Carbon Monoxide) |                |
| Range.....           | 0 to 2,000 PPM |
| Resolution.....      | 1 PPM          |

#### Ordering Information

|             | Part Number |
|-------------|-------------|
| 317-3 ..... | 0632 3173   |

testo  
317-3



# Gas Leak Detectors

## testo 316-1 & 317-2

Testo's gas leak detectors are rugged, yet lightweight for field use.

### Key Points 316-1

- Flexible 10 inch probe
- Detects gas leaks at fittings, in gas lines and around gas fueled appliances

### Key Points 317-2

- Continuous tone when alarm threshold is exceeded
- Gas concentrations shown in bar graph display

#### Ordering Information

|             | Part Number |
|-------------|-------------|
| 316-1 ..... | 0632 0316   |
| 317-2 ..... | 0632 3172   |

testo  
316-1



testo  
317-2

# Smoke Spot Testing

## testo 308

### Digital and manual smoke spot testing

#### Digital Smoke Spot Tester

Perform digital smoke spot testing in less than 60 seconds with the **highest accuracy (to smoke spot 0.1) and repeatability**. Eliminate troublesome look-up charts, avoid errors caused by condensation, and prevent the irregularity of manual pumping. The 308 draws the precise volume then digitally analyzes exhaust. The large, backlit display presents the “real” smoke spot number with remarkable ease and accuracy.

#### Key Points

- One-hand operation
- Large backlit display
- Integrated moisture removal
- Integrated filtration
- Rechargeable
- Fast (<60 seconds)
- Accurate (0.1) spot number
- Repeatable results

#### Manual Smoke Spot Tester

Perform oil heating smoke spot test using this tried and true method. Our design features multi-threaded cap for the polycarbonate barrel which resists corrosion. This ensures your safety as well as the reliability of testing. The manual smoke spot tester is compliant with ASTM, D2156.



testo  
308

#### Technical Data

Storage temperature: .....-4° to +122 °F  
Operating temperature:.....32° to +104 °F  
Weight:..... 1.32 lbs.  
Dimensions:..... 10.63 x 2.48 x 4.72 in.

#### Ordering Information

|  | Part Number |
|--|-------------|
| 316-1 .....  | 0632 0316   |
| 308 .....  | 0563 3080   |
| Includes Digital Smoke Meter, Rechargeable Battery, Soft Carry Case, Power Supply / Recharger and Replacement Filter Paper |             |

#### Accessories

|   | Part Number |
|---|-------------|
| Fast IR printer .....   | 0554 0549   |
| Bluetooth printer with power supply (only works with Bluetooth upgraded 330 unit) ..... | 0554 0553   |
| Stack mount digital smoke meter .....   | 0554 0616   |
| Power supply / Recharger .....  | 0554 1096   |
| Charging station for rechargeable battery .....   | 0554 1103   |

# Indoor Climate Measurement

## testo 480



The latest in cutting-edge measurement technology from testo providing the most accurate indoor climate measurements, like temperature, humidity, and airflow



testo  
480

A comfortable climate is a key factor to productivity at the office, health at home, and safe storage at an industrial location. When adjustments are required, HVAC and Test and Balance professionals work to identify issues quickly, so the indoor climate is adjusted and comfortable once again.

The testo 480 can aid HVAC professionals to **optimally configure systems** in offices, residential locations, and industrial buildings, and **record all relevant climate parameters of indoor air quality** such as CO<sub>2</sub>, °F, and even light.



Use the new testo 480 and its intelligent probes to keep indoor climates comfortable and HVAC equipment working optimally!

### Key Points

- **Reliable Measurements:** The perfect combination of a highly accurate, rugged hand-held instrument and a wide variety of probes to meet the needs of HVAC and T&B professionals
- **Save Calibration Time:** Intelligent probes retain calibration information and increase productivity in the field
- **Manage Data:** Use the easyCLIMATE™ software to simplify data handling of large jobs and maintain stored profiles
- **Save Time:** Perform multiple measurements simultaneously
- **Probe Variety:** Choose from a wide selection of probes to match any measurement need





## Technical Data

|   |   |
|---|---|
| Sensor connections .....                    | 2 x TC Type K, 1 x differential pressure, 3 x digital                         |
| Other connections .....                     | USB, SD-card, power supply  |
| Operating temp. ....                        | 32° to 105 °F   |
| Power supply .....                          | Battery or connected power supply for longterm measuring and battery charging |
| Battery life .....                          | Up to 8 hours   |
| Display .....                               | Color graphics/ display   |
| Memory .....                                | Up to 10,000 rdgs.  |
| Differential pressure measuring range ..... | ±10 "H <sub>2</sub> O   |
| Differential pressure resolution .....      | 0.001 "H <sub>2</sub> O   |

## Ordering Information

|  |                                 |
|--|---------------------------------|
| <b>testo 480 including easyCLIMATE PC software, power supply and USB cable</b> | <b>Part Number</b><br>0563 4800 |
| Tripod for comfort level measurement .....                                     | 0554 0743                       |
| Comfort level probe (requires part no. 0430 0100).....                         | 0628 0143                       |
| Globe probe, 6" .....  | 0602 0743                       |
| Humidity and temperature probe, 0.4" diam. (requires part no. 0430 0100).....  | 0636 9743                       |
| IAQ probe including desktop stand (requires part no. 0430 0100).....           | 0632 1543                       |
| Light probe .....  | 0635 0543                       |
| System case for comfort level measurements .....                               | 0516 4801                       |
| <b>HVAC System Performance Kit</b>   | <b>Part Number</b>              |
| testo 480 including easyCLIMATE PC software, power supply and USB cable .....  | 0563 4800                       |
| Vane probe, 0.62" diam. with telescope (requires part no. 0430 0100).....      | 0635 9542                       |
| Thermal flow probe with telescope (requires part no. 0430 0100).....           | 0635 1543                       |
| Vane probe, 4" diam. (requires part no. 0430 0100).....                        | 0635 9343                       |
| Humidity and temperature probe, 0.47" diam. (requires part no. 0430 0100)..... | 0636 9743                       |
| IAQ probe including tripod (requires part no. 0430 0100).....                  | 0632 1543                       |
| Prandtl pitot tube "L" type pitot tube 13" SS.....                             | 0635 2145                       |
| System case for HVAC measurements .....  | 0516 4800                       |

## Accessories

|  |                    |
|--|--------------------|
|  | <b>Part Number</b> |
| Funnel set (13" x 13"), including carry bag for round vents 8" diam.....                                 | 0563 4170          |
| Connection hose for differential pressure measurement .....  | 0554 0440          |
| Testo IR printer, 1 roll of thermal paper and 4 AA batteries .....                                       | 0554 0549          |
| Plug-in head cable .....   | 0430 0100          |
| TC probe Type K .....  | see testo.com      |
| Testovent 410 Flow Funnel: for low flow (<50 CFM) including carrying bag .....                           | 0554 0410          |
| Testo saline pots: Humidity adjustment 11.3% RH and 75.3% RH, including adapter for humidity probe ..... | 0554 0660          |
| Spare thermal paper for printer (6 rolls) .....  | 0554 0568          |

## Ordering Information: Probes

| Probe  | Measurement Range   | Accuracy (±1 digit)   | Part #    |
|--|---|---|-----------|
| <b>Flow Probes</b>                                       |   |   |           |
| <b>Vane measurement probe, ø 0.6"</b>                    | 78 to 9,800 fpm<br>14 to 158 °F   | ±(39 fpm + 1% of reading)<br>78 - 8,000 fpm<br>±(39 fpm + 2% of reading)<br>8,000 - 10,000 fpm<br>±3°F  | 0635 9542 |
| <b>Thermal flow probe</b>                                | 0 to 4000 fpm<br>-4 to 158 °F<br>0 to 100 %RH   | ±(6 fpm + 4% of reading)<br>±0.9 °F<br>2.5%   | 0635 1543 |
| <b>Vane measurement probe, ø 4"</b>                      | 20 to 3,000 fpm<br>32 to 140 °F   | ±(20 fpm + 1.5% of reading)<br>±0.9 °F  | 0635 9343 |
| <b>Comfort Level Probes</b>                              |   |   |           |
| <b>Humidity and temperature probe, ø 0.4"</b>            | 0 to 100 %RH<br>-4 to 158 °F  | ±(1.5 %) 0 to 90 %RH<br>±(2.0 %) 90 to 100 %RH<br>±0.9 °F   | 0636 9743 |
| <b>IAQ probe</b>   | -4 to 158 °F<br>0 to +100 RH<br>0 to 10,000 ppm CO <sub>2</sub><br><br>281 to 442 "H <sub>2</sub> O | ±0.9 °F<br>2.5 %<br>±(50 ppm CO <sub>2</sub> + 2% of reading)<br>0 to +5,000 ppm CO <sub>2</sub><br>±(100 ppm CO <sub>2</sub> + 3% of reading)<br>5.001 to +10,000 ppm CO <sub>2</sub><br>±1.2 "H <sub>2</sub> O<br>26s | 0632 1543 |
| <b>Degree of turbulence probe</b>                        | 32 to 122 °F<br>0 - 1,000 fpm   | ±0.9 °F<br>±(59 fpm + 4 of reading)   | 0623 0143 |
| <b>Globe probe, ø 6"</b>                                 | 32 to 248 °F  | Type K thermocouple, class 1  | 0602 0743 |
| <b>Lux probe</b>   | 0 to 1000,000 Lux   | Class C according to DIN 5032-7<br>f1 = 6% V-Lambda<br>f2 = 5% cos  | 0635 0543 |
| <b>Additional Probes</b>                                 |   |   |           |
| <b>High-precision Pt100 immersion/ penetration probe</b> |   |   |           |
| <b>TC probe Type K and Pitot tubes</b>                   | see www.testo.com   |   |           |

# HVAC Performance Test Kit

## testo 435



The testo 435 is the preferred instrument for today's professional air balancing contractors, commissioning experts, and building energy management specialists.



testo  
435

Easily pinpoint and troubleshoot problems with HVAC systems and see results of corrections immediately utilizing any of the wide variety of probes available. Quickly and easily verify system performance to provide real time BTU/hour readings.

### Applications:

- Air balancing analysis
- Air flow traverses in ducts
- IAQ Diagnostics
- V/AC system performance testing
- U-Value / R-Value determination



Complete diagnostic kits available.

### Key Points

- Accepts a wide variety of wired/wireless probes for airflow, pressure, temp. %RH, CO & CO<sub>2</sub>
- Performs timed and multi-point averaging, as well as CFM and BTU/h calculations
- Internal precision pressure sensor available
- Printing capabilities (measurement, with date and time)
- Data logs up to 10,000 readings (optional)
- Integrates readings of up to three wireless temperature/humidity probes

**testo.com** (800) 227-0729



## Technical Data

### Thermal Anemometer Probe

Velocity Range ..... 0 to 4000 fpm

### 3-Function Probe (T/H/V)

Temperature Range ..... - 4° to 158 °F

Humidity Range ..... 0 to 100 %RH

Velocity Range ..... 0 to 4000 fpm

### Mini-Vane Velocity Probe

Velocity Range ..... 118 to 8000 fpm

### IAQ Probe (T/H/CO<sub>2</sub>)

Temperature Range ..... 32° to 122 °F

Humidity Range ..... 1 to 99.9 %RH

CO<sub>2</sub> ..... 0 to 10,000 ppm

### Differential Pressure Internal 435-3 & 435-4

Pressure Range ..... 0 to 10 "H<sub>2</sub>O

### Wireless Humidity Probe option 435-2 & 435-4

Temperature Range ..... - 4° to 160 °F

Humidity Range ..... 0 to 100 %RH

## Additional Probes/Accessories

|   | Part Number |
|---|-------------|
| IAQ Probe (CO <sub>2</sub> , humidity, temp) .....  | 0632 1535   |
| Three Function Probe (temp, RH & velocity) .....  | 0635 1535   |
| CO Probe 0-500 ppm .....  | 0632 1235   |
| 4" (100 MM) vane probe for 435 .....  | 0635 9435   |
| 5/8" Telescopic Vane Velocity Probe .....   | 0635 9535   |
| 2.4" Telescopic Vane Probe .....  | 0635 9335   |
| Hot-wire probe, 32" telescopic handle .....   | 0635 1025   |
| Duct humidity / temperature probe .....   | 0636 9735   |
| U-Value / R Value probe (required a wireless temp or temp/RH probe) .....   | 0614 1635   |
| Flow Funnel Kit for low flow measurements (<50 CFM) (8" round & 13" sq) .....   | 0563 4170   |
| Leak Surface Probe, TC type K, 32° to 572 °F .....  | 0602 0193   |
| Waterproof immersion / penetration probe, TC Type K, -76° to 752 °F .....   | 0602 1293   |
| Pipe clamp probe, TC Type K for pipes 0.2" to 2.5", -76° to 266 °F / -60° to 130 °C, short-term to 536 °F / 280 °C .....    | 0602 4592   |
| Pipe clamp temperature probe (1" max. dia.), TC type K -58° to 210 °F / -50° to 100 °C, short-term to 266 °F / 130 °C ..... | 0602 4692   |

## Wireless Probes and Accessories

|  | Part Number |
|--|-------------|
| Note: Wireless module required.  |             |
| All wireless probe handles come with a K-type thermocouple socket.                         |             |
| Wireless Module (USA / Canada) .....   | 0554 0190   |
| Wireless Handle for plug in probe heads .....  | 0554 0191   |
| Wireless Humidity probe (2.0%) .....   | 0636 9736   |
| Wireless temp/penetration probe head .....   | 0602 0293   |
| Wireless temp/surface probe head .....   | 0602 0394   |
| Wireless Upgrade Kit D (RH) 635/435 .....  | 400563 1912 |
| (NOTE: Wireless Upgrade Kit required for use with 435-1 kits and wireless humidity probes) |             |

NOTE: Wireless Upgrade Kit required for use with 435-1 kits and wireless humidity probes

## Ordering Information

|  | 435-1<br>Velocity Kit<br>- Hotwire | 435-1<br>Velocity Kit<br>- Vane | 435-2 IAQ<br>Kit with<br>memory | 435-4 IAQ<br>Kit with<br>memory |
|--|------------------------------------|---------------------------------|---------------------------------|---------------------------------|
| <b>Part Number</b>                                     | 400563 4350                        | 400563 4351                     | 400563 4354                     | 400563 4355                     |
| <b>Thermal Anemometer Probe</b>                        | X                                  |                                 |                                 |                                 |
| <b>Mini-Vane Airflow Probe</b>                         |                                    | X                               |                                 |                                 |
| <b>Three function probe (temp, RH &amp; velocity)</b>  |                                    |                                 |                                 |                                 |
| <b>IAQ probe CO<sub>2</sub>, humidity, temperature</b> |                                    |                                 | X                               | X                               |
| <b>Integral Differential Pressure</b>                  |                                    |                                 |                                 | X                               |
| <b>19" Pitot tube</b>                                  |                                    |                                 |                                 | X                               |
| <b>Silicon hose for pressure probes (16 ft. long)</b>  |                                    |                                 |                                 | X                               |
| <b>Service Case for Compact Pro</b>                    | X                                  |                                 |                                 |                                 |
| <b>Deluxe Service Case for Compact Pro</b>             |                                    | X                               | X                               | X                               |
| <b>Recharger incl. 4 NiMH rech. batteries</b>          |                                    |                                 | X                               | X                               |
| <b>Memory</b>  | -                                  | -                               | X                               | X                               |
| <b>Wireless Module for instrument (radio receiver)</b> |                                    |                                 |                                 |                                 |
| <b>Wireless Handle (radio transmitter)</b>             |                                    |                                 |                                 |                                 |
| <b>RH/Temp Wireless probe (high performance)</b>       | -                                  | -                               |                                 |                                 |

- = Not available 0 = option. Most accessories listed are available / compatible unless listed with a "-". Note: Additional wired probes are optional on all models



# Mini Rotating Vane Anemometer

## testo 416



The 416 is an ideal instrument for in-duct airflow measurements

The small diameter (< 5/8") rotating vane probe permits easy access and very accurate readings. The mini-vane requires no air density corrections regardless of the temperature, pressure, or humidity. Internal functions make it both quick and easy to perform multi-pass traverses (which provide the most accurate flow profiles).

### Key Points

- Small probe provides easy duct access
- No air density corrections required
- Easy flow traverses
- 30" telescoping probe handle included
- Multi-point and timed-mean averaging
- Calculates to CFM readings
- Large backlight display
- HOLD/MIN/MAX functions for easy review



testo  
416



### Technical Data

|                 |                             |
|-----------------|-----------------------------|
| Vane Probe:     |                             |
| Range.....      | 118 - 8000 fpm (99,999 cfm) |
| Resolution..... | 1 fpm                       |

### Ordering Information

|          | Part Number |
|----------|-------------|
| 416..... | 400563 4161 |

*"Testo is a world leader  
in portable airflow  
instrumentation"*





# Rotating Vane Anemometer

## testo 417

The large-vane 417 allows for easy air flow and velocity measurements from registers and grills.

The 4" diameter rotating vane provides stable and accurate flow measurements from an all-in-one instrument.

### Key Points

- Highly accurate airflow measurement ( $\pm 1.5\%$  of rdg)
- Flow direction indication in display
- Measure velocity, volume flow (CFM) and °F or °C
- Multi-point and timed-mean averaging
- HOLD/MIN/MAX functions for fast – easy review



testo  
417



### Technical Data

|  |
|--|
| Vane Head:   |
| Velocity:.....50 to 4000 fpm ( $\pm 1.5\%$ of rdg) |
| Volume Flow: .....0 to 99,999 CFM                  |
| Temperature: ..... 32° to 122°F                    |

### Ordering Information

|           | Part Number |
|-----------|-------------|
| 417 ..... | 400563 4170 |

# Thermal Anemometer

## testo 425



The 425 anemometer provides extremely fast response to air flow conditions in a duct or at a register.

A hot-wire sensor employs extremely accurate NTC technology which permits reading in low-flow applications. An extremely small measuring head is mounted on a telescopic handle to permit access in hard-to-reach installations.

### Key Points

- Flow, volume flow (CFM) and temperature measurements
- Multi-point and timed-mean calculations
- HOLD/MIN/MAX make for fast easy data review
- Clear backlit display
- TopSafe protective case (optional)



testo  
425



### Technical Data

Thermo anemometer Head:

Velocity: ..... 0 to 4000 fpm { $\pm(6 \text{ fpm} + 5\% \text{ of rdg.})$ }

Temperature: .....  $-4^{\circ}$  to  $+160^{\circ} \text{ F}$

### Ordering Information

#### Part Number

425 ..... 400563 4251



*"Rugged quality and reliable accuracy are what testo products are all about"*

# Digital Manometer

## testo 512

**Testo's 512 digital manometer is a multi-functional pressure measurement meter.**

The 512 allows you to perform system diagnostic tests with a single meter, including total external static pressure (TESP), differential pressure, manifold pressures, duct velocities and volumetric airflow with a pitot tube.

### Key Points

- Complete with hose and pitot tube for velocity analysis
- Air density compensation integrated
- Optional TopSafe protects from impact, dust and water
- Simultaneous velocity and pressure measurements in ventilation systems
- Pressure drops across fans, filters, etc.
- Building pressure and depressurization tests (512-1 only)



**testo**  
**512**



### Technical Data

|                 |                         |
|-----------------|-------------------------|
| 512-1           |                         |
| Pressure: ..... | ±1.0 "H <sub>2</sub> O  |
| Velocity: ..... | 0 to 4,000 fpm          |
| 512-2           |                         |
| Pressure: ..... | ±10.0 "H <sub>2</sub> O |
| Velocity: ..... | 0 to 15,000 fpm         |

### Related Products

|                                 |           |
|---------------------------------|-----------|
| PocketPro Velocity and Pressure |           |
| 410 – Vane Anemometer .....     | 0560 4101 |
| 510 – Digital Manometer .....   | 0560 0510 |

### Ordering Information

|             | Part Number |
|-------------|-------------|
| 512-1 ..... | 400563 5121 |
| 512-2 ..... | 400563 5122 |

# Vane Anemometer

## testo 410



Small, powerful and accurate – the testo 410 is extremely convenient to use.

The 410 Pocket PRO is a handy tool to check then balance airflows to eliminate air stratification and drafts and to determine if IAQ falls within acceptable comfort guidelines.

### Key Points

- Integrated 1.25" vane
- Timed average calculation
- HOLD/MIN/MAX



testo  
410



### Technical Data

|                             |   |
|-----------------------------|---|
| Velocity                    |   |
| Range:                      | 80 to 4000 fpm  |
| Resolution:                 | 1 fpm   |
| Accuracy:                   | ± (40 fpm + 2% of rdg.)                                 |
| Units:                      | m/s, hm/h, fpm, mph, knots, windchill (°C/°F), Beaufort |
| Temperature                 |   |
| Range:                      | 14° to 122 °F   |
| Resolution:                 | 0.1 °F  |
| Accuracy:                   | ± 0.9 °F  |
| Units:                      | °C/°F   |
| Humidity (testo 410-2 only) |   |
| Range:                      | 0 to 100 %rH  |
| Resolution:                 | 0.1 %rH   |
| Accuracy:                   | ±2.5 %rH (5 to 95 %rH)                                  |
| Units:                      | %rH, wet bulb, dewpoint                                 |
| Operating temp.:            | 14° to 122 °F   |
| Batteries:                  | (2 x AAA Alkaline)                                      |
| Battery Life:               | (without backlight)                                     |
| testo 410-1:                | 100 hrs   |
| testo 410-2:                | 60 hrs  |
| Dimensions                  | 5.2 x 1.8 x 1 in.                                       |

### Ordering Information

|             |             |
|-------------|-------------|
|             | Part Number |
| 410-1 ..... | 0560 4101   |



# Ambient CO<sub>2</sub> Analyzer testo 535

Efficient CO<sub>2</sub> measuring instrument for indoor air quality

## Applications:

- Ambient indoor air quality spot checks and long-term evaluations
- Air quality measurements in ventilation ducts

## Key Points

- No maintenance, dual channel NDIR sensor
- Snapshot or long-term measurements
- Printing capabilities
- TopSafe protective case (optional)



testo  
535



## Technical Data

CO<sub>2</sub> Range: ..... 0 to 10,000 ppm

## Ordering Information

|           | Part Number |
|-----------|-------------|
| 535 ..... | 0560 5350   |

# Thermohygrometer

## testo 625



The testo 625 is the ideal instrument to measure between relative humidity, wet bulb, temperature, and dew point all at the touch of a button.

It provides humidity three different ways: fixed probe, cable probe and the optional wireless probe. Faster, more accurate, and easier to use than the sling psychrometer. Perfect for in duct measurements.

### Key Points

- Displays temperature, relative humidity, wet bulb temperature, and dewpoint
- HOLD/Min/Max functions for easy review
- Backlit display
- Auto Off
- Patented humidity sensor assures long term stability
- TopSafe cover (optional) protects against dust, water, and impact



testo  
625



### Technical Data

|                | NTC               | Testo humid. Sensor, cap. |
|----------------|-------------------|---------------------------|
| Meas. range:   | -14° to +140 °F   | 0 to +100 %RH             |
| Accuracy:      | ±0.9 °F ±1 digit  | ±2.5 %RH (+5 to +95 %RH)  |
| Resolution:    | 0.1 °F            | 0.1 %RH                   |
| Oper. temp.:   | -4° to +122 °F    |                           |
| Storage temp.: | -40° to +185 °F   |                           |
| Battery life:  | 70 hr             |                           |
| Battery type:  | 9V battery        |                           |
| Dimensions:    | 7 x 2.5 x 1.5 in. |                           |
| Weight:        | 7 oz.             |                           |
| Warranty:      | 2 years           |                           |

### Ordering Information

|  | Part Number |
|--|-------------|
| 625 .....  | 0563 6251   |
| 625 Kit (Includes 625 with integral humidity probe head, compact service case and handle for RH probe w/cable) ..... | 400563 6251 |

### Accessories

|   |           |
|---|-----------|
| Handle for plug-in humidity probe head (cable included) ..... | 0430 9725 |
| Case for instrument .....                                     | 0516 0210 |
| Wireless adapter (915.00 MHzFSK) .....                        | 0554 0190 |
| Wireless Handle for plug in probe heads .....                 | 0554 0191 |

# Digital Humidity STICK

testo 605

Testo's humidity sticks are rugged, providing fast and accurate humidity, temperature wetbulb (-H2) and dewpoint (-H1) readings.



The 1/2-inch probe head fits conveniently in a duct and is useful to test indoor and outdoor ambient spaces.

**Technical Data**

|                   |                     |
|-------------------|---------------------|
| Humidity .....    | Range: 0 to 100 %rH |
| Temperature ..... | 32° to 122°F        |

**Ordering Information**

|                        | Part Number |
|------------------------|-------------|
| 605-H1 (Dewpoint)..... | 0560 6053   |
| 605-H2 (Wetbulb) ..... | 0560 6054   |



# Pocket PRO ThermoHygrometer

testo 610

Perform IAQ analysis to resolve comfort complaints (T/H).



Use wet bulb, dry bulb, and relative humidity to evaluate humidity control and equipment sizing concerns.

**Technical Data**

|                   |                      |
|-------------------|----------------------|
| Temperature ..... | Range: 14° to 122 °F |
| Humidity .....    | 0 to 100 %rH         |

**Ordering Information**

|          | Part Number |
|----------|-------------|
| 610..... | 0560 0610   |



# Infrared Thermometers

## testo 830 & 845



Testo's infrared thermometers are perfect instruments for HVAC contractors to perform quick, accurate non-contact temperature measurements.



testo 830



testo 845

Thermographers will find them useful to verify the background temperatures when using thermal imaging devices. Testo offers a range of spot ratios to suit your needs. All instruments have adjustable emissivity to provide accurate temperatures of any surface. Single and multi-spot lasers help clearly identify the surface area you are measuring.



### Key Points

- Non-contact sensor, for quick, safe measurements of a wide range of surfaces
- Pistol design and laser for precise spotting
- Audible alarm limits with multiple options
- Models available that accept a K-type thermocouple
- Adjustable emissivity (0.20 to 1.00)
- Fast response time
- Backlit display
- A range of optics ratio to fit your needs

**testo.com** (800) 227-0729





### Features of the 845:

- Optics selections for distance (75:1) and close focus (0.04" spot from 3" )
- Intense cross laser sighting for true indication of the measuring point
- Three-line display ( °F, min./max. values, alarm limit values and emissivity)
- 90 test memory
- Document on site with testo printer (optional)
- PC software for archiving and documenting data (included)
- Tripod adapter for online measurement via USB cable (included)
- Humidity module with temperature (optional)
- Measure points as close as ¼ in.
- Ultra fast scan capability (100 msec) to survey any area quickly and accurately (reference accuracy  $\pm 1.5$  °F)

### Ordering Information

|   | 830 T1:   | 830 T2:   | 830 T2 Kit: | 830 T3:   | 830 T4:   | 830 T4 Kit: | 845 Basic: | 845 Kit:  |
|---|-----------|-----------|-------------|-----------|-----------|-------------|------------|-----------|
| <b>Part Number</b>                            | 0560 8301 | 0560 8302 | 0563 8302   | 0560 8303 | 0560 8304 | 0563 8304   | 0563 8450  | 0563 8451 |
| <b>10:1 Optics Ratio</b>                      | X         |           |             |           |           |             |            |           |
| <b>12:1 Optics Ratio</b>                      |           | X         | X           |           |           |             |            |           |
| <b>30:1 Optics Ratio</b>                      |           |           |             |           | X         | X           |            |           |
| <b>75:1 Optics Ratio</b>                      |           |           |             |           |           |             | X          | X         |
| <b>Close Focus Optics</b>                     |           |           |             | X         |           |             | X          | X         |
| <b>Single Point Laser</b>                     | X         |           |             |           |           |             |            |           |
| <b>Multi Point Laser</b>                      |           | X         | X           | X         | X         | X           | X          | X         |
| <b>Accepts Type K Thermocouple</b>            |           | X         | X           | X         | X         | X           | X          | X         |
| <b>Surface Probe and Pouch with Belt Clip</b> |           |           | X           |           |           | X           |            |           |
| <b>Humidity Probe with Temp.</b>              |           |           |             |           |           |             | 0          | X         |
| <b>Hard Sided Carrying Case</b>               |           |           |             |           |           |             | X          | X         |

0 = Optional (upgrade or accessories required)

### Technical Data

Non-Contact Temperature (830):

Range:..... -22° to 752 °F

Accuracy:.....  $\pm 2.7$  °F

Non-Contact Temperature (845):

Range:..... -31° to 1742 °F

Accuracy: .....  $\pm 1.4$  °F

Thermocouple Temperature:

Range:..... 31° to 1742 °F (845)

Range:..... -58° to 932 °F (830)

Humidity Module (845):

Humidity Range:..... 0 to 100% rH

Temperature Range:..... 32° to 122 °F

### Accessories for 845

|   | Part Number |
|---|-------------|
| Fast IR printer (for 845) .....                   | 0554 0549   |
| Leather pouch with belt clip for 830 series ..... | 0516 8302   |
| Fast action surface probe Type K.....             | 0602 0393   |

### Related Products

|  |           |
|--|-----------|
| Pocket PROs 810 – Two-in-one IR Temperature Meter..... | 0560 0810 |
|--|-----------|



***“Testo has kits and accessories to make your job easier... check ‘em out.”***

## Powerful, convenient, accurate and affordable

Technicians wear many hats. They sell new installations and upgrades, certify an installation has been done correctly, and they perform service on equipment already installed. Testo's Pocket PROs make sure your technicians have **precision**

**measurements** in order to be the most **professional salesperson, the competent installation pro, and the expert service technician**. These handy pocket-sized tools are perfect for the entire team.





### 410: Vane Anemometer

A handy tool to check, then balance airflows to eliminate air stratification and drafts, and to determine if IAQ falls within acceptable comfort guidelines.

#### Technical Data

|                                 |                       |
|---------------------------------|-----------------------|
| Velocity.....                   | Range: 80 to 4000 fpm |
| Temperature .....               | Range: 14° to 122°F   |
| Humidity (model 410-2 only) ... | Range: 0 to 100 %rH   |

#### Ordering Information

|             | Part Number |
|-------------|-------------|
| 410-1 ..... | 0560 4101   |
| 410-2 ..... | 0560 4102   |



### 610: ThermoHygrometer

Perform IAQ analysis to resolve comfort complaints (T/H). Use wet bulb, dry bulb, and relative humidity to evaluate humidity control and equipment/sizing concerns.

#### Technical Data

|                   |                      |
|-------------------|----------------------|
| Temperature ..... | Range: 14° to 122 °F |
| Humidity .....    | Range: 0 to 100 %rH  |

#### Ordering Information

|           | Part Number |
|-----------|-------------|
| 610 ..... | 0560 0610   |



### 510: Digital Manometer

Perform system diagnostic tests with a single meter including total external static pressure (TESP), differential pressure duct velocities (fpm with optional pitot tube) and manifold pressures.

#### Technical Data

|              |  |
|--------------|--|
| Pressure     |  |
| Range: ..... | ± 40 "H <sub>2</sub> O   |
| Units:       | hPa, mbar, Pa, mmH <sub>2</sub> O,<br>mmHg/inH <sub>2</sub> O, inHg, PSI |

#### Ordering Information

|           | Part Number |
|-----------|-------------|
| 510 ..... | 0560 0510   |



### 460: RPM Meter

Verify fan and motor speeds with manufacturers' data to determine and optimize airflow.

#### Technical Data

|           |                      |
|-----------|----------------------|
| RPM ..... | Range: 100 to 29,999 |
|-----------|----------------------|

#### Ordering Information

|           | Part Number |
|-----------|-------------|
| 460 ..... | 0560 0460   |



### 810: Two-in-One IR Temp. Meter

Measure temperature differences between air and walls or windows to pinpoint potential heat loss/gain areas. Safely perform non-contact temperature measurement of pipes or motors.

#### Technical Data

|                                |                       |
|--------------------------------|-----------------------|
| Surface temperature (IR) ..... | Range: -22° to 572 °F |
| Air temperature .....          | Range: +14° to 122 °F |
| Optics: .....                  | 6:1                   |

#### Ordering Information

|           | Part Number |
|-----------|-------------|
| 810 ..... | 0560 0810   |



### 511: Absolute Pressure Meter

Perform pressurization risk assessments for combustion air zones as well as room-to-room pressurization tests without running a reference hose.

#### Technical Data

|                |   |
|----------------|---|
| Pressure ..... | Range: 8.86 to 35.44 inHg   |
| Units:         | hPa, mbar, Pa,<br>mmH <sub>2</sub> O, mmHg/inH <sub>2</sub> O,<br>inHg, PSI |

#### Ordering Information

|           | Part Number |
|-----------|-------------|
| 511 ..... | 0560 0511   |



## 606: Moisture Meter

Monitor material moisture to predict drying times, ensure construction best practices and test for water damage. Meter is programmed with characteristics for wood and other building materials.

### Technical Data

|   |                      |
|---|----------------------|
| Material moisture .....                 | Range: 0 to 90%      |
| Air humidity (606-2 only) .....         | Range: 0 to 100%rH   |
| Air temperature (606-1 and 606-2) ..... | Range: 14° to 122 °F |

### Ordering Information

|             | Part Number |
|-------------|-------------|
| 606-1 ..... | 0560 6060   |
| 606-2 ..... | 0560 6062   |



## 540: Light Meter

Measure light intensity to address comfort and fatigue concerns which affect productivity and safety. Use for lighting codes/standards evaluation and enforcement.

### Technical Data

|                       |   |
|-----------------------|---|
| Light Intensity ..... | Range: 0 to 99,999 Lux<br>(0-3000 foot-candles) |
|-----------------------|---|

### Ordering Information

|           | Part Number |
|-----------|-------------|
| 540 ..... | 0560 0540   |



## 405-V1: Metric Thermal-Anemometer

Testo's velocity STICK has a rapid response sensor for detecting the most minute changes in air velocity such as window, door and heat exchanger leaks. This mini-anemometer reads air velocity (m/s only) and temperature (°C only) and calculates volume flow in cubic meters per hour.

### Technical Data

|                   |                      |
|-------------------|----------------------|
| Velocity .....    | Range: 0-10m/s       |
| Temperature ..... | Range: -4° to 122 °F |

### Ordering Information

|             | Part Number |
|-------------|-------------|
| 410-1 ..... | 0560 4101   |
| 410-2 ..... | 0560 4102   |



## 605: Digital Humidity STICK

Testo's humidity sticks are rugged, providing fast and accurate humidity, temperature wetbulb (-H2) and dewpoint (-H1) readings. The ½-inch probe head fits conveniently in a duct or is useful to test indoor and outdoor

### Technical Data

|                   |                       |
|-------------------|-----------------------|
| Humidity .....    | Range: 0 to 100 %rH   |
| Temperature ..... | Range: 32° to +122 °F |

### Ordering Information

|                         | Part Number |
|-------------------------|-------------|
| 605-H1 (Dewpoint) ..... | 0560 6053   |
| 605-H2 (Wetbulb) .....  | 0560 6054   |

testo  
905-T1



testo  
905-T2

## 905: Digital Thermometer

Testo's temperature sticks are fast, accurate mini-thermometers. 905-T1 is an exceptional penetration or immersion probe. The spring-loaded head of 905-T2 surface probe works on smooth and uneven surfaces.

### Technical Data

|                   |                       |
|-------------------|-----------------------|
| Temperature ..... | Range: -60° to 662 °F |
|-------------------|-----------------------|

### Ordering Information

|              | Part Number |
|--------------|-------------|
| 905-T1 ..... | 0560 9055   |
| 905-T2 ..... | 0560 9056   |





# Video PRO Inspection Scope

## testo 318-V

The 318-V digital inspection scope/borescope with video output is ideal for examining hard-to-reach areas normally hidden from sight.

View objects as close as 3/8" with the sensitive, auto-focus optics and bright white LED light. Use the 318-V for all types of applications involving maintenance, troubleshooting, heat exchanger, and duct inspection.

### Key Points

- Auto-contrast and auto-focus
- 2.5" sharp image color LCD (320 x 240)
- Rugged, flexible shaft – solvent and water resistant
- Smallest diameter shaft (0.42")
- View objects as close as 3/8"
- Composite video output jack (RCA)
- Capture image on any standard recording device\*
- Clip-on mirror for 90° viewing
- Clip-on magnet to retrieve objects up to ¼ pound
- Hands-free operation with convenient magnetic back



testo  
318-V



### Technical Data

|                              |                     |
|------------------------------|---------------------|
| Shaft length .....           | 42" or 72"          |
| Tip/Shaft diameter .....     | 0.42"               |
| Viewing angle .....          | 55 degrees          |
| Viewing distance .....       | 0.4" to infinity    |
| Viewing monitor .....        | 2.5" color LCD      |
| Screen resolution .....      | 320 x 240           |
| Shaft bend radius .....      | 2.5" minimum        |
| Power supply .....           | 4 AA (alkaline)     |
| Battery life .....           | 5 hrs continuous    |
| Operating temperature .....  | 32° to 113 °F       |
| Storage temperature .....    | 4° to 158 °F        |
| Dimensions (L x W x D) ..... | 6.3 x 3.7 x 1.9 in. |

### Ordering Information

#### Part Number

318-V Video Pro Kit 1: Includes: 42" shaft, digital inspection scope, mirror tip, magnetic tip, carrying case and 4 AA batteries.....400563 VP42

318-V Video Pro Kit 3:  
Includes: 72" shaft, digital inspection scope, mirror tip, magnetic tip, carrying case and 4 AA batteries.....400563 VP72

\*Note: Video capture device not included.

# Thermal Imaging Cameras

## testo 875, 876, 881 & 882



### The professional's choice for versatile and durable imaging solutions

The testo thermal imagers are innovative imagers that let you visualize problems in real time.

- Heat that bleeds through walls, doors, and windows due to poor construction, insulation, design, or installation
- Electrical circuits that could be about to fail or have fire potential
- Heat caused by friction in a failing bearing of a motor or compressor

Thermal imagers can also visualize potential problems from moisture trapped behind walls or under floors that can lead to mold growth.

With four different configurations, testo thermal imagers provide simple, easy to use tools which can provide answers to problems in your everyday work.

Many features are built into testo imagers which provide advantages and lasting durability. Features that you look for in professional quality imagers.

Visit [www.testousa.com/thermal](http://www.testousa.com/thermal) to learn about thermal imaging best practices.



### Features

- Visualize areas of interest
- Record thermal and visual images
- Auto hot/cold spot indicators
- Free reporting software included with every testo imager
- One hand operation
- Close up ( 4") imaging
- High level of thermal sensitivity
- Accurate
- 3.5" to 4.3" view screens
- Panorama Image Assistant
- Long life Li-Ion battery
- SuperResolution
- Four hour operating time
- Easy to use menus
- SD card for image storage
- Lightweight
- Two year warranty



### 875 Thermal Imager

The testo 875 thermal imager allows you to quickly identify problems and potential defects. Use it to evaluate building energy loss evaluations to help customers cut down on heating and cooling expenses. As an entry level imager, the testo 875 still provides a fast and accurate imaging solution.



### 876 Thermal Imager

The testo 876 thermal imager is the first in our line of camcorder style imagers. A view screen design that is built on an articulating joint helps keep the display in view at any angle especially in hard to reach places.

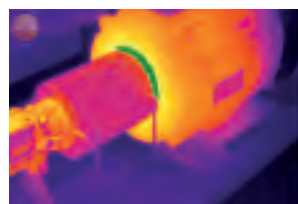
With redesigned graphical menu interface and easy to use buttons the testo 876 is a rugged and versatile thermal imager that satisfies the needs of many different applications.



### 881 Thermal Imager

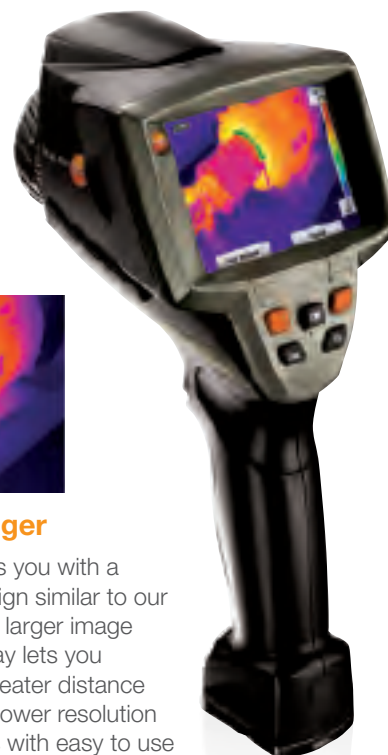
The testo 881 thermal imager has the ability to visualize temperatures up to 1022°F. This sensitivity opens up a wide variety of additional applications in commercial and industrial settings.

When used as a part of regular predictive maintenance programs, it can save thousands of dollars by safely pinpointing potential concerns early, and preventing production losses.



### 882 Thermal Imager

The testo 882 provides you with a durable pistol grip design similar to our 881 imager, but with a larger image array. A 320 x 240 array lets you visualize details at a greater distance than ever before than lower resolution imagers. Combine this with easy to use one hand operation and long battery life, and the 882 becomes a vital part of your professional tools.





# Thermal Imaging Cameras *cont.*

## testo 875, 876, 881 & 882



### Professional Quality, Professional Results, Professional's Choice

#### Testo thermal imagers for building thermography:

Discover anomalies and weak spots in buildings quickly and without damage. With the testo thermal imagers you are hot on the trail of energy loss in building thermography, helping your customers to avoid expensive heating costs.

- Prevent damage and save money
- Stand out thanks to high resolution images
- Ensure fast and comprehensive analysis
- Have an intuitive menu structure
- Guarantee a large image section thanks to the 32° lens



Examine building envelopes with the highest accuracy



Identify potential moisture areas to prevent dangerous allergenic mold growth

### Unique TwinPix software blends both the thermal and visual images together into one image





## Technical Data

|  | 875  | 881  | 882  | 876  |
|--|--|--|--|--|
| <b>Detector type</b>                       | FPA 160 x 120 pixels, a.Si   | FPA 160 x 120 pixels, a.Si   | FPA 320 x 240 pixels, a.Si   | FPA 160 x 120 pixels, a.Si   |
| <b>Thermal sensitivity (NETD)</b>          | <80 mK at 86 °F (30 °C)  | <50 mK at 86 °F (30 °C)  | <60 mK at 86 °F (30 °C)  | <80 mK at 86 °F (30 °C)  |
| <b>Geometric resolution (IFOV)</b>         | 3.3 mrad (standard lens), 1.0 mrad (telephoto lens)                            | 3.3 mrad (standard lens), 1.0 mrad (telephoto lens)  | 1.7 mrad   | 3.3 mrad (standard lens), 1.0 mrad (telephoto lens)                            |
| <b>Focus</b>                               | manual   | manual and motor focus   | manual and motor focus   | manual and motor focus   |
| <b>Spectral range</b>                      | 8 to 14 µm   | 8 to 14 µm   | 8 to 14 µm   | 8 to 14 µm   |
| <b>Optical field / min. focus distance</b> | 33° x 25° / 15.7"  | 33° x 25° / 15.7"  | 33° x 25° / 15.7"  | 33° x 25° / 15.7"  |
| <b>Display options</b>                     | only IR image 875-1, IR and visual image 875-2                                 | IR and visual image  | only IR / only digital image / IR and visual image   | only IR / only digital image / IR and visual image                             |
| <b>Temp. range</b>                         | -4° to 212 °F (-20° to 100 °C)<br>32° to 536 °F (0° to 280 °C)<br>(switchable) | -4° to 212 °F (-20° to 100 °C)<br>32° to 662°F (0° to 350 °C)<br>(switchable)<br>High temp. option: 662° to 1022 °F (350° to 550 °C) | -4° to 212 °F (-20° to 100 °C)<br>32° to 662°F (0° to 350 °C)<br>(switchable)<br>High temp. option: 662° to 1022 °F (350° to 550 °C) | -4° to 212 °F (-20° to 100 °C)<br>32° to 536 °F (0° to 280 °C)<br>(selectable) |
| <b>Accuracy</b>                            | -4° to 536 °F, ±2% of rdg  | -4° to 536 °F, ±2% of rdg, ± 3% of reading (662° to 1022 °F)   | -4° to 662 °F, ±2% of rdg, ±3 °C, ± 3% of reading (662° to 1022 °F)  | -4° to 536 °F, ±2% of rdg  |
| <b>Emissivity</b>                          | 0.01 to 1 / manual   | 0.01 to 1 / manual   | 0.01 to 1 / manual   | 0.01 to 1 / manual   |
| <b>Ambient operating temp.</b>             | 5° to 104 °F   | 5° to 104 °F   | 5° to 104 °F   | 5° to 104 °F   |
| <b>Storage temp. range</b>                 | -22° to 140 °F   | -22° to 140 °F   | -22° to 140 °F   | -22° to 140 °F   |
| <b>Color Palettes</b>                      | 4 options  | 9 options  | 9 options  | 4 options  |
| <b>Dimensions (L x W x H)</b>              | 6 x 4.2 x 10.3 in.   | 6 x 4.2 x 10.3 in.   | 6 x 4.2 x 10.3 in.   | 15.7 x 12.8 x 7.9 in.  |

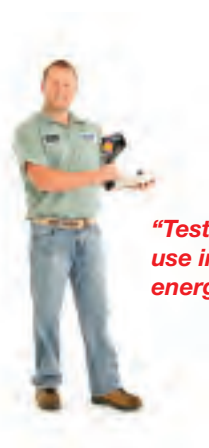
## Ordering Information

|  | 875-1     | 875-2     | 875-2 Deluxe | 881-2        | 881-2 Deluxe | 882          | 876       | 876 Deluxe |
|--|-----------|-----------|--------------|--------------|--------------|--------------|-----------|------------|
| <b>Part Number</b>   | 0560 8754 | 0560 8753 | 0563 8753    | 0563 8881 75 | 0563 8881 76 | 0560 8882 70 | 0560 8763 | 0560 8764  |
| <b>TwinPix for overlay of thermal &amp; visual image</b>     | -         | X         | X            | X            | X            | X            | X         | X          |
| <b>Telephoto lens</b>  | 0         | 0         | X            | 0            | X            | -            | 0         | X          |
| <b>2-way battery charger 0554 8801</b>                       | 0         | 0         | X            | 0            | X            | 0            | 0         | X          |
| <b>Spare battery 0554 8802</b>                               | 0         | 0         | X            | 0            | X            | 0            | 0         | X          |
| <b>Protective lens 0554 8805</b>                             | 0         | 0         | X            | X            | X            | 0            | 0         | X          |
| <b>Display sunshield 0554 8806</b>                           | 0         | 0         | X            | 0            | 0            | 0            | -         | -          |
| <b>Protective sunshield case w/ shoulder strap 0554 8814</b> | 0         | 0         | 0            | 0            | X            | 0            | -         | -          |

0- optional, "-" = not available. Note: All Imager Kits include a rugged, hard-shell case, SD card, USB cable, professional software, power supply, and tripod mounting plate.

## Accessories

|  |                               |
|--|-------------------------------|
| Telephoto lens.....  | Special handling, please call |
| High Temperature Filter (Measure up to 1022 °F).....                                       | 0554 8813*                    |
| *(Special handling, please call) Models 881-2, 882 only – installed by testo service dept. |                               |
| Emissivity tape (heat proof up to 572 °F) .....  | 0554 0051                     |
| Two-way battery charger .....  | 0554 8801                     |
| Spare battery .....  | 0554 8802                     |
| Tripod .....   | 0554 8804                     |
| Protective lens .....  | 0554 8805                     |
| Display sunshield .....  | 0554 8806                     |
| Spare power supply .....   | 0554 8808                     |
| Protective sunshield case with shoulder strap .....  | 0554 8814                     |



***"Testo thermal imagers are built for daily use in the HVAC/R building trade and for energy conservation consultation."***

# Wireless Environmental Monitoring

## Saveris™



**The testo Saveris system is a simple and cost effective solution to monitor multiple measuring points or areas.**

For a little more money than using data loggers, or a lot less money than chart recorders, Saveris is automated to record and report data 24/7/365 without the hassle of having someone manually maintain, collect, and assemble the data for reporting. Saveris has the additional, and very valuable benefit, to alert you to problems via visual, audible, email, even text message alerts.

### Applications:

The versatility and simplicity of Saveris makes it a great choice for a multitude of uses, but key applications include:

- Hospitals
- Labs
- Warehouses
- Supermarkets
- Museums

### Key Points

- **Up to 150 probes can be connected to a system**
- **A wide variety of temperature, humidity, and analog probes**
- **Communications via wireless, Ethernet, or both**
- **Automated reporting**
- **Visual and audible alarms in the base and externally via relays**
- **Alerts via email and/or text message (with optional GSM module)**



For additional information visit [www.testousa.com/Saveris](http://www.testousa.com/Saveris) or call 800-227-0729



# Data Loggers

## testo 174, 175 & 176

**Testo Data Loggers offer easy data collection, dual mode readout, USB interface, and SD Card.**

**One button operation** – Click and “GO” button instantly starts logging and recording

**TWO standard interfaces** – Mini USB and SD card for easiest direct communication with your PC – no added interface required

**Large display w/ one button backlight** – For easily viewing data in poorly lit areas

**Longer battery life** – Designed to conserve energy for data recording without interruption

### Key Points

- Ideal for equipment commissioning and troubleshooting
- Inexpensive to install in multiple locations so you can perform a complete analysis
- Record measurement values, max/min, date, time
- All data saved, regardless of battery condition
- Long-term and multi-channel temperature and humidity measurement

### Ordering Information

|                               | 174 T                             | 174 H  | 175 T3  | 176 T4  |
|-------------------------------|-----------------------------------|--|---|---|
| <b>Part Number</b>            | 0572 1560                         | 0572 6560  | 0572 1753   | 0572 1764   |
| <b>Channels</b>               | 1 x internal                      | 2 x internal   | 2 x internal  | 4 x external  |
| <b>Meas. Range</b>            | -22° to 158 °F<br>(-30° to 70 °C) | -4° to 158 °F<br>(-20° to 70 °C)<br>Internal 0 to 100 %RH                            | -58° to 752 °F<br>(Type T) -58° to 1832 °F<br>(Type K)            | -328° to 752 °F (Type T)<br>-310° to 1832 °F (Type K)<br>-148° to 1382 °F (Type J)                        |
| <b>Accuracy ±1 digit</b>      | ±0.9 °F<br>(-22° to 158 °F)       | ±0.9 °F<br>-4 to 158°F<br>(-20° to 70 °C)<br>±3 %RH<br>(2 to 98 % RH)<br>+0.03 %RH/K | ±0.9°F<br>(-58° to 158 °F)<br>±0.7 % of rdg.<br>(158° to 1832 °F) | ±1% of reading<br>(-328° to 212 °F)<br>±0.5 °F<br>(-148° to 158 °F)<br>±0.5% of rdg.<br>(158° to 1832 °F) |
| <b>Battery life (at 77°F)</b> | 500 days at 15 min. meas. rate    | 1 year at 15 min. meas. rate   | 3 years at 15 min. meas. rate                                     | 8 years at 15 min. meas. rate   |
| <b>Operating temp.</b>        | -22° to 158 °F<br>(-30° to 70 °C) | -4° to 158 °F<br>(-20° to 70 °C)   | -4° to 131 °F<br>(-20° to 55 °C)                                  | -4° to 158 °F<br>(-20° to 70 °C)  |
| <b>Dimensions</b>             | 2.3 x 1.5 x 0.8 in.               | 2.3 x 1.5 x 0.8 in   | 3.5 x 2.0 x 1.0 in.   | 4.0 x 2.5 x 1.3 in.   |
| <b>Battery type</b>           | 2 x CR 2032 Lithium               | 2 x CR 2032 Lithium  | 3 x AlMn Type AAA or Energizer IP 65                              | 1 x Lithium (TLH-5903)  |
| <b>Measuring Cycle</b>        | 1 min - 24 hr                     | 1 min - 24 hr  | 10 sec - 24 hr  | 1 sec - 24 hr   |
| <b>Memory</b>                 | 16,000 readings                   | 16,000 readings  | 1 million readings  | 2 million readings  |



### testo 174

Compact and economical for humidity and / or temperature



### testo 175 series

Versatility and value with four different models and numerous probe choices



### testo 176 series

Advanced features and super rugged construction

**FREE Programming and Analysis Software**



# A World of...

## ...Professional Measuring Solutions

Testo Inc. was founded in 1986 and today is headquartered within the rolling hills of Sparta in northern New Jersey with quick accessibility to New York City. Testo's facility is equipped to handle a large mix of market and products needs. Our sales and customer service department has extensive application knowledge to provide first class support on product selection. With state-of-the-art calibration laboratories and a complete full-service repair department, you are assured of accurate instrumentation with efficient and quick product repairs.

**In addition to HVAC/R instruments for contractors, testo has a complete range of products to fit the needs of everyone from critical HVAC professionals to emission compliance specialists.**



### Industrial Combustion Analyzers

For compliance testing and troubleshooting combustion processes testo offers a choice of high end emission and industrial combustion analyzers. These ultra rugged analyzers are ideal for measuring NO, NO<sub>2</sub>, NOx, SO<sub>2</sub>, O<sub>2</sub>, CO and more. Both the testo 350 and 340 feature testo's exclusive sensor technology and upgraded features and benefits for the most demanding engine testing and combustion analysis applications.



### Transmitters: Stable and Accurate Stationary Measurements

Testo has a wide variety of transmitters that can meet any stationary measurement application and budget. Whether a warehouse needs to be kept climate controlled, or a critical environment needs longterm monitoring stability, the complete line of testo transmitters can easily fulfill any demanding temperature, humidity and differential pressure application.



- **Completely automated**
- **Secure data integrity**
- **Guaranteed reliability**





We measure it.



### Reference Class Instruments

For applications with demanding performance and accuracy requirements, testo also produces a large selection of probes and instruments for a best-fit solution.

### Calibration and Certification

Testo instruments come with the longest warranties in the industry, but should your meter require a repair or calibration we have a fully equipped, expert service department that will have your meter up and running within the shortest turn around time possible. Our recently certified ISO 17025 calibration laboratory is prepared to calibrate and certify temperature, humidity, velocity and more to the highest ISO and NIST standards.



[testo.com](http://testo.com) (800) 227-0729

## Index by Model Number

### MODEL # .....PAGE(S)

|  |       |
|--|-------|
| <b>174, 175, 176:</b> Data Loggers.....  | 35    |
| <b>308:</b> Smoke Spot Tester .....  | 11    |
| <b>316-1:</b> Gas Leak Detector with Flexible Probe .....                        | 10    |
| <b>317-2:</b> Gas Leak Detector .....  | 10    |
| <b>317-3:</b> CO Meter .....   | 10    |
| <b>318-V:</b> Video Inspection Scope with Video Output ..                        | 29    |
| <b>327-1:</b> Combustion Efficiency Analyzer.....                                | 6     |
| <b>330-1 G LL / 330-2 G LL:</b><br>Advanced Combustion Efficiency Analyzer ..... | 8     |
| <b>405-VI:</b> Metric Thermal Anemometer.....                                    | 28    |
| <b>410:</b> Pocket PRO Vane Anemometer.....                                      | 20/27 |
| <b>416:</b> Mini Rotating Vane Anemometer.....                                   | 16    |
| <b>417:</b> Rotating Vane Anemometer .....                                       | 17    |
| <b>425:</b> Thermal Anemometer .....   | 18    |
| <b>435:</b> HVAC Performance Test Kit .....                                      | 14    |
| <b>460:</b> Pocket PRO RPM Meter.....  | 27    |
| <b>480:</b> IAQ Measuring Instrument .....                                       | 12    |
| <b>510:</b> Pocket PRO Digital Manometer .....                                   | 27    |
| <b>511:</b> Pocket PRO Absolute Pressure Meter .....                             | 27    |

### MODEL # .....PAGE(S)

|   |       |
|---|-------|
| <b>512 -1/-2:</b> Digital Manometer .....               | 19    |
| <b>535:</b> Ambient CO <sub>2</sub> Analyzer .....      | 21    |
| <b>540:</b> Pocket PRO Light Meter.....                 | 28    |
| <b>550:</b> Digital Refrigeration System Analyzer ..... | 4     |
| <b>557 / 570:</b> Advanced Digital RSAs.....            | 4     |
| <b>605:</b> Pocket PRO Humidity Stick .....             | 23/28 |
| <b>606:</b> Pocket PRO Moisture Meter .....             | 28    |
| <b>610:</b> Pocket PRO Thermohygrometer.....            | 23/27 |
| <b>625:</b> Thermohygrometer .....                      | 22    |
| <b>810:</b> Pocket PRO IR Temperature Meter.....        | 27    |
| <b>830:</b> Infrared Thermometer .....                  | 24    |
| <b>845:</b> Advanced Infrared Thermometer .....         | 24    |
| <b>875:</b> Thermal Imaging Camera.....                 | 30    |
| <b>876:</b> Thermal Imaging Camera.....                 | 30    |
| <b>881:</b> Thermal Imaging Camera.....                 | 30    |
| <b>882:</b> Thermal Imaging Camera.....                 | 30    |
| <b>905:</b> Pocket PRO Digital Thermometer .....        | 28    |
| <b>Saveris:</b> Wireless Environmental Monitoring.....  | 34    |

We measure it.



## A world leader in the design, development and manufacture of portable instrumentation

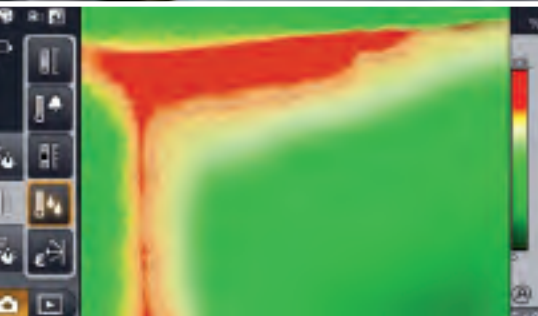


Testo is a world leader in the design, development and the manufacturing of portable test and measurement instrumentation. Founded in 1957 in Lenzkirch, Germany, the company's 24 subsidiaries support customers across the globe. When it comes to providing quality ISO 9001 measurements that you can rely on – nobody comes close.

We measure it. **testo**



**Testo is recognized as the leading worldwide manufacturer of hand held test and measurement instruments.**



testo, Inc., 40 White Lake Road, Sparta, NJ 07871 • [info@testo.com](mailto:info@testo.com) • Fax 862-354-5020

Distributor:

**testo.com** (800) 227-0729