

# KRISCOOL

....the new range of high efficiency Air Cooled Chillers  
(30 TR to 390 TR)



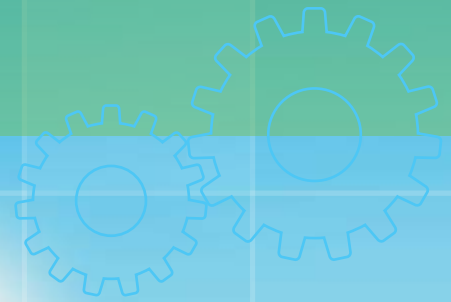
NA 02.11 A

*Futuristic Designs from*

**cristopia**

A Joint Venture Company of **CIAT** France

# KRISCOOL AIR COOLED CHILLERS



## Cristopia's KRISCOOL:

These latest generation **Air Cooled and Water Cooled Screw Chillers** are developed based on years of experience and French expertise, to meet demands of Indian & International market for high efficiency products.



Cristopia's **KRISCOOL** range is designed for high efficiency operation over a wide range of operating conditions and is very well suited for operations with brine as well as with Thermal Energy Storage System.

**KRISCOOL's** futuristic design offers single and twin compressor machines with totally independent refrigerant circuits, to provide maximum flexibility.





# KRISCOOL AIR COOLED CHILLERS



## FEATURES

**KRISCOOL** range of Chillers are energy efficient and reliable equipment. These Chillers are designed to minimize energy cost as well as maintenance cost, resulting in unmatched operational cost savings, year after year.

## COMPRESSOR

**KRISCOOL** Chillers are equipped with latest generation screw compressors. Twin screw compressor with semi-hermetic motor operate on totally independent refrigerant circuits.

## EVAPORATOR

The Evaporator is direct expansion shell and tube type with optimized refrigerant charge to give safe operation at highest efficiency. Multiple circuit Chillers are equipped with Multiple Evaporators allowing reduced chilled water flow and pumping power at reduced machine loads. Additionally, the machines can be designed for optional high chilled water temperature differential resulting in further improved machine efficiency along with reduced pump flow and corresponding consumption to best suit the installation.

## ELECTRONIC EXPANSION VALVE

The **KRISCOOL** series Chillers are equipped with advanced electronic expansion valves ensuring improved energy efficiency, precise control of temperature and efficient and safe part load operation.

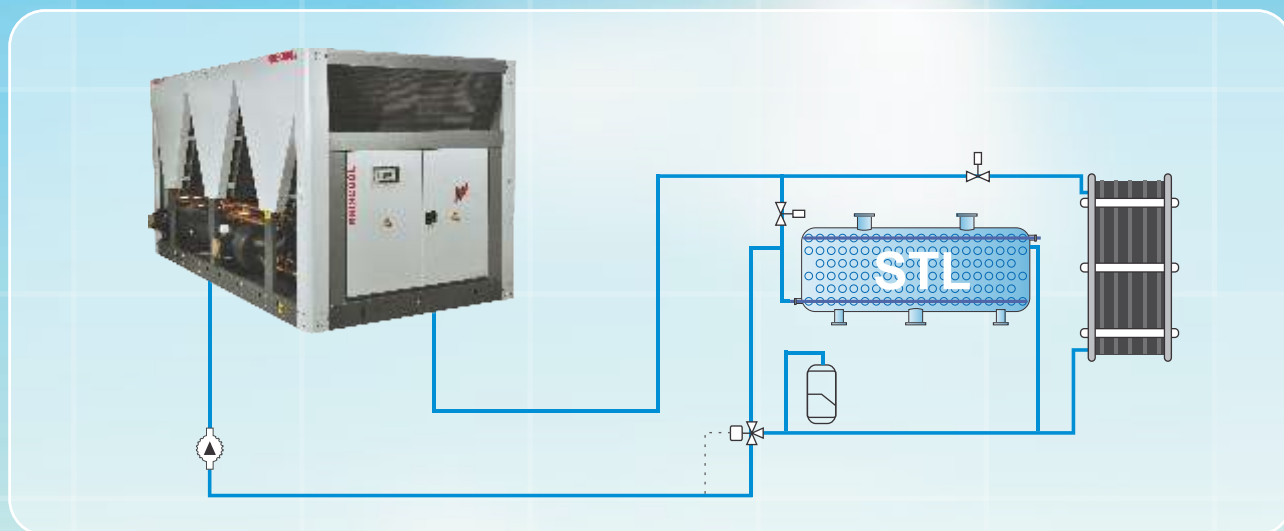
## WIDE OPERATING RANGE

In today's world order where Environment and rationalization of Energy usage are the topmost priorities, ever increasing number of installations utilize Thermal Energy Storage technique requiring subzero chiller operation.



# KRISCOOL AIR COOLED CHILLERS

**KRISCOOL** RANGE OF CHILLERS IS INHERENTLY COMPATIBLE TO WORK AT SUB-ZERO TEMPERATURES AND HENCE SUITABLE WITH THERMAL ENERGY STORAGE AS WELL AS PROCESS REQUIREMENT.



## FREE HOT WATER

The machine is offered with optional De-superheater, for free of cost hot water generation.

## INTELLIGENT CONTROL

KRISCONTROL CRISTOPIA's latest generation intelligent microprocessor based control ensures fully co-ordinated and optimum operation at all conditions with unrivalled precision.

Components are controlled automatically for continuous operation and set conditions maintained.

### ■ Adaptive Control

Adjusts to suit any system set-up (Differential on the water leaving, differential on the water entering and differential on the water entering with low temperature thermal storage tank working) and efficiently manage safeties.

### ■ BMS Communication

Option available for BMS communication through MODBUS / BACNET / ETHERNET / LON protocol ensuring greater adaptability, remote communication & increased safety.

### ■ Numerous safety devices

Air flow control, antifreeze protection, phase inversion protection, discharge temperature control, high and low-pressure protection, and anti short cycle safeguard the chiller and extend its life.

### ■ Easy to use ergonomic interface

With an LCD screen that displays operating status, parameter readings, temperature, pressure, operating times and a log menu that records faults, the KRISCONTROL interface makes running your system an easy task.

### ■ Pump Control

ON/OFF Control for 2 pumps possible

## KRISCOOL PERFORMANCE

KRISCOOL AIR COOLED RANGE KRIS CRS - R134a						
Sizes	PERFORMANCES (KW)		DIMENSIONS (mm)			Operating Weight (Kg)
	Pf	Pa	Length	Width	Height	
400 1 EAC	107	33	1450	2200	2200	1450
700 1 EAC	167	51	2890	2200	2200	2200
900 1 EAC	210	68	2890	2200	2200	2400
1250 1 EAC	308	93	4260	2200	2200	3320
1400 1 EAC	362	106	4260	2200	2200	3620
1600 1 EAC	420	124	5630	2200	2200	4220
1800 1 EAC	462	142	5630	2200	2200	4850
2100 1 EAC	535	162	5630	2200	2200	5250
1400 2 EAC	334	103	4260	2200	2200	4090
1600 2 EAC	377	119	4260	2200	2200	4190
1800 2 EAC	420	136	4260	2200	2200	4390
2150 2 EAC	518	161	5630	2200	2200	5410
2500 2 EAC	616	186	6990	2200	2200	6240
2650 2 EAC	670	199	8360	2200	2200	6940
2800 2 EAC	724	211	8360	2200	2200	7140
3000 2 EAC	782	229	8360	2200	2200	7740
3200 2 EAC	840	247	8360	2200	2200	8340
3400 2 EAC	897	265	9730	2200	2300	9180
3600 2 EAC	954	283	9730	2200	2300	9510
3900 2 EAC	1012	303	11100	2200	2300	10110
4200 2 EAC	1070	323	11100	2200	2300	10410
4500 2 EAC	1116	339	11100	2200	2300	10710
4800 2 EAC	1180	350	12460	2200	2300	11700
5200 2 EAC	1262	379	12460	2200	2300	11900
5600 2 EAC	1370	404	13700	2200	2300	12700

Pf: Cooling Capacity in KW Pa: Total Power Consumption including fan in KW

Rated in accordance with ARI

The above data is for information purpose only and is subject to change without any prior notification.

Please contact our office for further detailing.

# cristopia

A Joint Venture Company of **CIAT** France

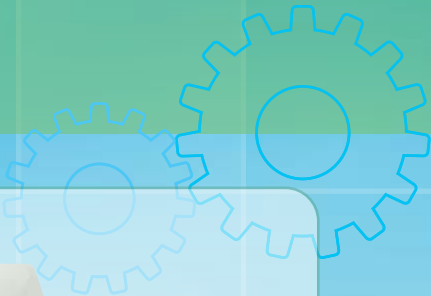
**Cristopia Energy Systems (I) Pvt. Ltd.**

Village Umerikheda, 12th KM. Indore-Khandwa Road, Dist. Indore-452020 (M.P.) India

Phone: (0731) 4228333, 4228306, Fax: (0731) 4228343. E-mail: [kehems@kehems.com](mailto:kehems@kehems.com) ; [sales@kehems.com](mailto:sales@kehems.com)



# KRISCOOL AIR COOLED CHILLERS



User-Friendly-ergonomical Control-Monitoring-Parameters



Pump Control

BMS  
MODBUS/BACNET/ETHERNET/LON

## KRISCOOL comes with

- Continuous Capacity Control,
- Compressor Running Hour Balancing,
- Pro Active Unload for High Discharge Pressure,
- Monthly, Weekly and Hourly operation scheduling possibilities

## EQUIPMENT

Accessible semi-hermetic screw compressor	Standard
Auto-adaptative Microprocessor Control	Standard
Modulating capacity control from 50 to 100 %	400 1 EAC to 2100 1 EAC
Modulating capacity control from 25 to 100 %	1400 2 EAC to 5600 2 EAC
Possible controls (water inlet/water outlet/ice storage)	Standard
Low temperature glycol water operation	Standard
Electronic expansion valve	Standard
Star Delta Starting for Compressors	Standard
Faults memory	Standard
Main safety switch	Standard
Auxiliary transformer	Standard
Flow switch	Standard
Crankcase heater	Standard
Electrical panel wiring numbering	Standard
Economiser	Standard
BMS Communication cards: MODBUS/ BACNET/ ETHERNET / LON / TCP/IP/ MSTP	Optional
Desuperheater	Optional
Evaporator water headers	Optional (2 Options available)
Acoustic Enclosure	Optional
BLYGOLD coating on condenser coil	Optional
Spring type Antivibration mounts	Optional
Plant Manager (for management upto 8 units)	Optional
Compressor Suction Valve	Optional
Kit for Lifting by Crane	Optional
Container Kit	Optional

# KRISCOOL AIR COOLED CHILLERS



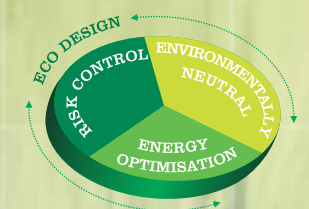
With our mission of Conservation, Optimization and Economization of available Energy, we continuously strive for delivering excellence through our products, customized innovative project engineering, dedicated project specific management & execution and renowned & well established after sales support.

**HIGH PERFORMANCE, LONG SERVICE LIFE, MAXIMUM RELIABILITY ARE THE COMMON DENOMINATORS OF KRISCOOL RANGE.**

**KRISCOOL** range is most environment friendly using minimised charge of HFC refrigerant, well within the approved and accepted international standards.



The precision manufacturing produces a leak proof machine tested to 1 gm/year refrigerant leakage limit, surpassing prevalent world standards.



## SERVICE

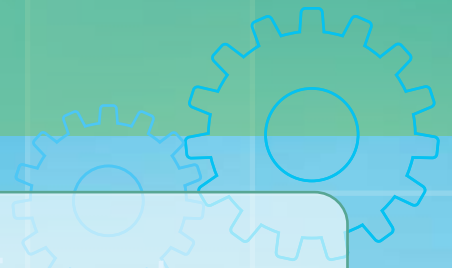
CRISTOPIA after-sales service network is spread throughout India, backed by a strong network of highly trained and experienced field technicians and engineers, to assist the customers in keeping their equipment in smooth operation with perfect running conditions.

As a part of our commitment to complete customer satisfaction, we ensure that our service teams respond to client requests with shortest possible turn around times.





# KRISCOOL AIR COOLED CHILLERS



## Our Esteemed Clients







## cristopia

A Joint Venture Company of **CIAT** France

**Cristopia Energy Systems (I) Pvt. Ltd.**

Village Umerikhedha, 12th KM. Indore-Khandwa Road, Dist. Indore-452020 (M.P.) India

Phone: (0731) 4228333, 4228306, Fax: (0731) 4228343. E-mail: [kehems@kehems.com](mailto:kehems@kehems.com) ; [sales@kehems.com](mailto:sales@kehems.com)

### CITY ADDRESS:

4B, BCM City, 'C' Block, 5th Floor, Navlakha Square, A.B. Road, Indore- 452001 (M.P.) India

### BRANCH OFFICES:

#### MUMBAI:

B-23, Monica, 2nd Floor,  
J.P. Road, Andheri(W),  
Mumbai- 58  
Ph: (022) 26236858, 26241042  
E-mail: [mumbai@kehems.com](mailto:mumbai@kehems.com)

#### PUNE:

Flat No. 16-17, Ground Floor,  
Building 'F', Hari Parva Residency,  
Grime Bagh, Solapur Road, Pune-13  
Ph: (020) 32527710, 64002798  
E-mail: [pune@kehems.com](mailto:pune@kehems.com)

#### BANGALORE:

House No. 3462,  
13th 'A' Main, HAL II Stage,  
Indira Nagar, Bangalore-08  
Ph: (080) 25203185  
E-mail: [kehems@gmail.com](mailto:kehems@gmail.com)

#### NOIDA:

D-191,  
Sector-10,  
Noida-201301  
Ph: (0120) 4247934, 4247935  
E-mail: [delhi@kehems.com](mailto:delhi@kehems.com)

#### KOLKATA:

P-41, Princep Street,  
Room # 601, 6th Floor,  
Kolkata-700072  
Ph: (033) 40033031, 40033182  
E-mail: [cristopia.kolkata@gmail.com](mailto:cristopia.kolkata@gmail.com)

#### CHENNAI:

91, Pantheon Road,  
Hardevi Chambers, IVth Floor,  
Egmore, Chennai-600008  
Phone 044-42145016  
E-mail: [chennai@kehems.com](mailto:chennai@kehems.com)

