



## DESCRIPTION

Thermodynamic steam trap with integral strainer, in forged carbon steel construction, for steam mains, tracers, headers & drip legs.

## FEATURES:

Complete replaceable working parts (disc and seat) facilitate economical and easy maintenance.

Hardened and lapped disc and seat provide steam tight seal, withstanding continuous and prolonged operation.

Condensate entry below the disc, concentric to the disc / seat and the three port discharge ensures a clean parallel lift of the disc with reference to the seat, eliminating localized wear and tear.

Ideal for fluctuating loads and pressures.

Perfect shut off, no steam loss.

**SIZES :** 1/2", 3/4"

**CONNECTIONS :** Screwed (NPT)  
Socket weld, Flanged\* , Buttweld.

\*End connection flanges of ASTM A105 forged carbon steel are welded on.

## LIMITING CONDITIONS:

PMA: Maximum allowable pressure	600 psig
TMA: Maximum allowable temperature	800 °F
Maximum operating back pressure at the outlet should not exceed 80% of the inlet pressure.	
Minimum differential pressure for satisfactory operation	3.5 psi

## INSTALLATION:

The trap will operate in any position but the preferred installation is in the horizontal plane with the disc cap on the top. Full port isolating valves should be installed upstream and downstream of the trap. Always open isolation valves slowly until normal operating conditions are achieved to avoid system shocks.



## MAINTENANCE:

The trap can be maintained inline without disturbing the piping connections. Ensure that the trap is isolated - upstream and downstream - before attempting to dismantle it. **ALLOW THE TRAP TO COOL BEFORE DISMANTLING.**

For trouble-free performance, periodic cleaning of the disc and seat is recommended.

Do not use abrasive / corrosive media for cleaning.

Only the disc and seat are subject to wear.

A worn disc and seat can be replaced, preferably as a set, along with the gaskets.

## IMPORTANT:

The trap should be installed as close as possible to the system drain point. For new installations, the system should be properly flushed prior to fitting the trap.

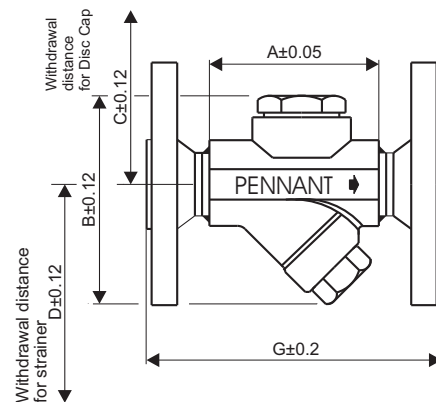
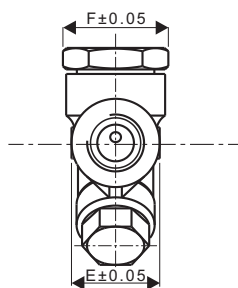
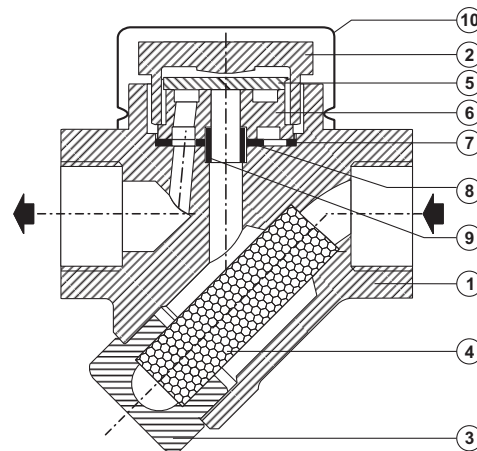
### MATERIAL

No.	PART	MATERIAL	QTY. (Nos.)
1.	BODY	ASTM A105	01
2.	DISC CAP	ASTM A743 CA 40	01
3.	STRAINER CAP	ASTM A743 CA 40	01
4.	STRAINER SCREEN	AISI 304 Perforated Sheet	01
5.	DISC (Hardened)	AISI 410 / 420 / D2	01
6.	DISC SEAT (Hardened)	AISI 420 / D2	01
7 & 8.	GASKET	SPIRAL WOUND SS304 WITH GRAPHITE FILLER	02
9.	LOCATOR	AISI 304	01
10.*	ISOTUB	SS	01

### \*OPTIONAL FITTINGS

**ISOTUB:** An insulating cover reduces the effect of excessive heat loss resulting from low ambient temperatures, wind, rain, etc.

**BLOW -OFF COCK:** When the blow-off cock is opened, loose material collected in the strainer is purged.



### DIMENSIONS (approx.) in inches:

A	B	C	D	E	F	Wt.(lbs)
3.35	4.02	2.17	3.35	1.6	1.91	2.5

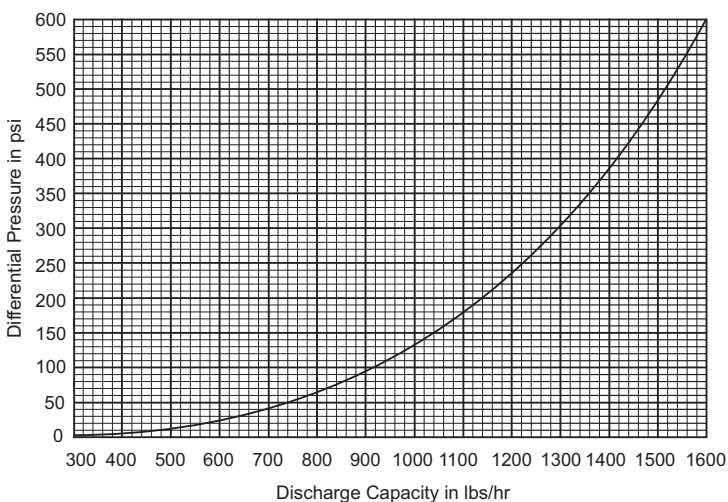
### FOR FLANGED TRAPS

Size/Flange Rating	G	Wt.(lbs) approx.
1/2" # 150	6.38	5.25
1/2" # 300	6.73	5.50
3/4" # 150	6.50	5.50
3/4" # 300	6.89	5.94

Flange ends #600 available on request.

### AVAILABLE SPARES:

Disc, Disc Seat, Gaskets, Strainer Screen (Packet of 5),  
 Blow-off Cock, Isotub.



Local regulations may restrict the use of this product below the conditions quoted. Limiting conditions refer to standard connections only.  
 In the interest of development and improvement of the product, we reserve the right to change the specifications without prior notice.