



DESCRIPTION:

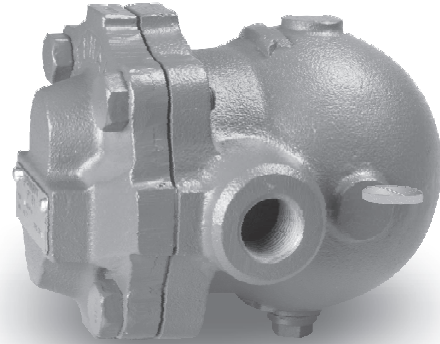
PT61 float and thermostatic (integral air vent) steam traps are designed for draining condensate from all types of low and medium pressure steam heating and process equipment.

Typical applications include unit heaters, heat exchangers, driers and jacketed vessels.

Available types :

PT61 - with Thermostatic Air Vent

PT61S - with Steam Lock Release (SLR)



FEATURES:

Modulating discharge.

Discharges condensate at steam temperature.

Excellent air venting (by thermostatic air vent).

USE: Saturated and superheated steam

SIZES: 1/2", 3/4"

CONNECTIONS: Screwed (NPT)

LIMITING CONDITIONS:

| | |
|---------------------------------|----------|
| PMA: Max. allowable pressure | 228 psig |
| TMA: Max. allowable temperature | 428 °F |
| PMO: Max. operating pressure | 200 psig |
| TMO: Max. operating temperature | 400°F |

INSTALLATION:

Standard horizontal installation with flow from right to left PT61.

UPON REQUEST:

- Horizontal installation with flow from left to right PT61 (L-R)
- Vertical installation with flow from top to bottom PT61(V).

Max. differential pressure range:

PT61-65 : 65 psi

PT61-145: 145 psi

PT61-200: 200 psi

The trap should be installed below the drain point of the equipment in a position so that the float arm is in a horizontal plane and the float rises and falls vertically, with the flow direction as indicated on the body.

The arrow on the nameplate should be pointing vertically upwards.

TRAP DISCHARGE CAPACITY IN lbs/hr

| DIFFERENTIAL PRESSURE (psi) | | | | | | | | | | | | | | | | | | |
|-----------------------------|------------|-----|-----|------|------|------|------|------|-------|-------|-------|-------|-------|-------|-------|-------|-------|-------|
| MODEL | SIZE | 7 | 15 | 21.5 | 28.5 | 42.5 | 57 | 65 | 70 | 85 | 100 | 115 | 128 | 145 | 157 | 170 | 185 | 200 |
| PT61-65 | 1/2", 3/4" | 440 | 616 | 705 | 770 | 880 | 1000 | 1090 | ----- | ----- | ----- | ----- | ----- | ----- | ----- | ----- | ----- | ----- |
| PT61-145 | 1/2", 3/4" | 297 | 330 | 365 | 396 | 462 | 530 | 560 | 615 | 660 | 770 | 860 | 890 | 925 | ----- | ----- | ----- | ----- |
| PT61-200 | 1/2", 3/4" | 275 | 308 | 330 | 363 | 418 | 485 | 506 | 540 | 595 | 650 | 715 | 770 | 825 | 890 | 946 | 1000 | 1060 |

Recommended safety factor: steady condns. 1.5 - 2; fluctuating condns. 2-3

MATERIAL:

| No. | PART | MATERIAL | QTY.(Nos.) |
|-----|--------------------------|--------------------------------|------------|
| 1. | BODY | CAST IRON | 01 |
| 2. | COVER | CAST IRON | 01 |
| 3. | GASKET | NON ASBESTOS | 01 |
| 4. | VALVE SEAT | CR STEEL | 01 |
| 5. | BALL FLOAT & LEVER ASSY. | SS | 01 |
| 6. | AIR VENT ASSY. | BIMETAL / SS | 01 |
| 7. | BOLT | HIGH TENSILE / ASTM A193 Gr.B7 | 04 |
| 8. | BRACKET ASSY. | AISI 304 | 01 |
| 9. | DRAIN PLUG | CS | 01 |
| 10. | GASKET | COPPER | 01 |
| 11. | SLR UNIT | AISI 304 | 01 |

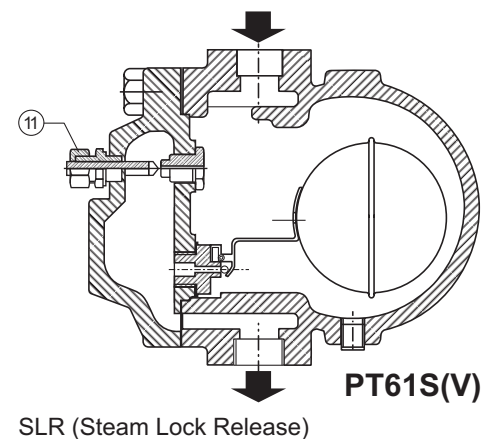
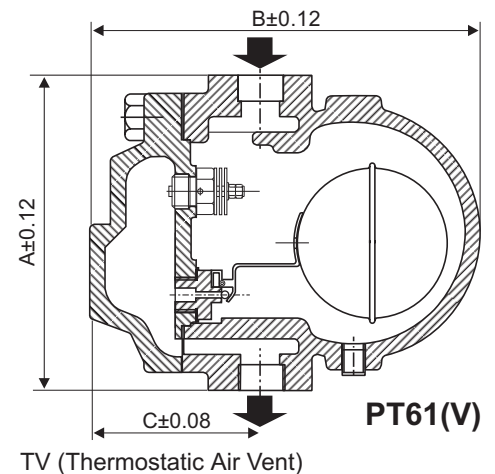
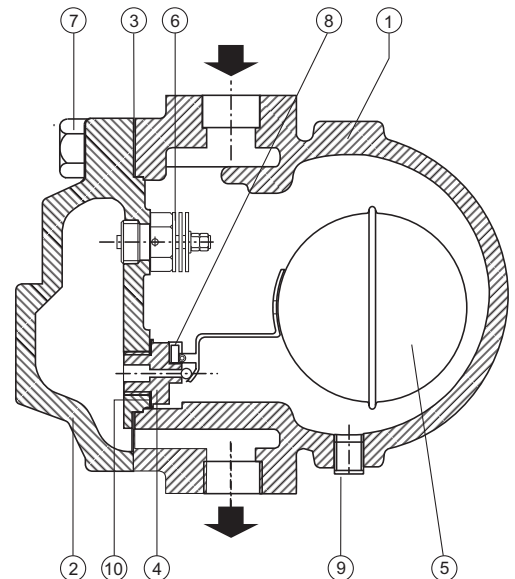
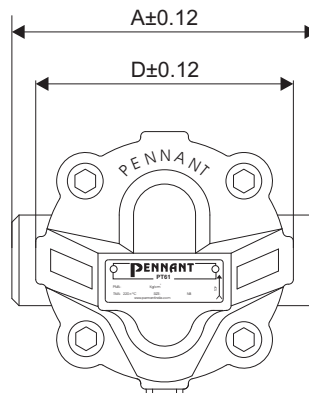
OPTIONAL: SS Diaphragm Air Vent

DIMENSIONS: (approx) in inches

| SIZE | A | B | C | D | Weight (lbs) |
|-------------|------|------|------|------|--------------|
| 1/2" & 3/4" | 5.12 | 5.75 | 2.45 | 4.33 | 7.25 |

AVAILABLE SPARES:

Valve Seat, Ball Float & Lever Assy.,
Air Vent, Gaskets.



Local regulations may restrict the use of this product below the conditions quoted. Limiting conditions refer to standard connections only.
In the interest of development and improvement of the product, we reserve the right to change the specifications without prior notice.