



Save energy for the future

## SEIKEN CORPORATION CO.,LTD

Contact: Mr. Doan Manh Thang

Mobile: +84-936554 515

Tel: 84-435148146

Fax: 84-435148147

Email: [thang.doan@seikenvietnam.com](mailto:thang.doan@seikenvietnam.com)

[Http://www.seiken.vn](http://www.seiken.vn)

Add: No. 316 Lac Long Quan Str, Tay Ho - Hanoi

## Company Information

We provide a wide range of products in Air Conditioning and Refrigerating, including Water & Geothermal Source Heat Pump Screw Chiller, Air Cooled Screw Water Chillers, Modular Water Cooled Chillers, Water Source Heat Pumps, Air Cooled Water Chillers, Air Cooled Duct Split Units, Rooftop Packaged Units, Water Cooled Packaged Units, Air Source Heat Pump Water Heaters, Fan Coil Units, Air Handling Units, Heat Recovery Fresh Air Handling Units, Precision Air Conditioners, Dehumidifiers, etc.

Besides we can provide Integrated Solutions for Cooling, Heating and Hot Water. This system is specially designed for energy conservation. It is suitable for building that needs to cool in summer and heat in winter, which also needs hot water all the year round.

The products of our company have the characteristics of low noise, energy conservation and high efficiency. Head-Power follows ISO9001 international quality control system and ISO14001 international environment control system strictly, thus our product quality and services are ensured.

# Products introduction

## 1) Air Cooled Ducted Split Air Conditioner



### Features:

1. Cooling capacity 7.8~156kw;
2. High static pressure;
3. Hermetic scroll compressor, Hitachi or Copeland brand;
4. Ceiling mounted(HAD), floor standing(HAL), free blowing(HAM).

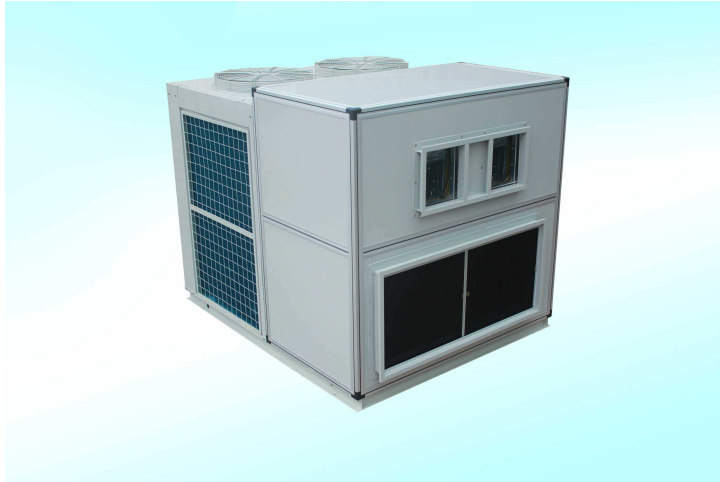
## 2) Water Cooled Packaged Air Conditioner



### Features:

1. Cooling capacity 9.9~238kw;
2. Shell and tube condenser
3. Hermetic scroll compressor, Hitachi or Copeland brand;
4. Ceiling mounted(HWD), floor standing(HWL), free blowing(HWM).

### 3) Rooftop Packaged Air Conditioner(WKL)



#### Features:

1. Cooling capacity 13~255kw;
2. Hermetic scroll compressor, Hitachi or Copeland brand;
3. Rooftop packaged unit;
4. Cooling only, heat pump, heating and electric heating.

### 4) Air Cooled Water Chiller(Scroll type) (HWAC)



#### Features:

1. Cooling capacity 7.1~39kW(Mini chiller); 39~250kw(Modular chiller);
2. Hermetic scroll compressor, Hitachi or Copeland brand;
3. Inlet/outlet water temp. 12/7°C;

## 5) Air Cooled Water Chiller(Screw type) (HWAL)



### Features:

1. Cooling capacity 150~1080kw;
2. Semi-hermetic screw compressor, German Bitzer brand;
3. Inlet/outlet water temp. 12/7°C;
4. English touch screen or LCD screen.

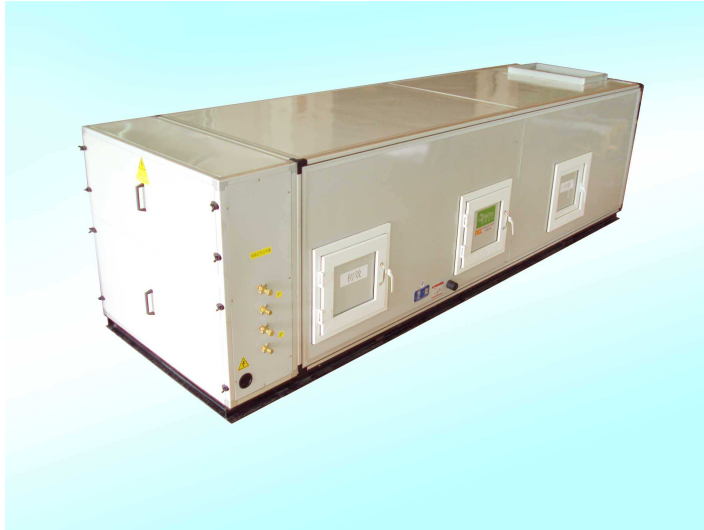
## 6) Water Cooled Water Chiller(Scroll type)



### Features:

1. Cooling capacity 16~160kW;
2. Hermetic scroll compressor, Hitachi or Copeland brand;
3. Inlet/outlet chilled water temp. 12/7°C;
4. Condenser inlet/outlet water temp. 30/35°C.

## 7) Air Cooled Cleaning Air Conditioner



### Features:

1. Cooling capacity 7.8~156kw;
2. Synthetic prefilter, fine synthtic bag filter;
3. DX AHU and air cooled condensing unit
4. Optional: heater, dehumidifier,etc.

## 8) Water Cooled Cleaning Air Conditioner



### Features:

1. Cooling capacity 9.0~240kw;
2. Shell and tube condenser
3. Hermetic scroll compressor, Hitachi or Copeland brand;
4. Synthetic prefilter, fine synthtic bag filter;
5. Optional: heater, dehumidifier,etc.



## 9) Chilled Water Air Handling Unit



### Features:

1. Air Volume 1500~60000kw;
2. Cooling coils: 4,6,8 rows;
3. Single skin panel, GI sheet;

## 10) Assembly Air Handling Unit



### Features:

1. Air Volume 2000~60000kw;
2. Cooling coils: 4,6,8 rows;
3. Double skin panel, GI sheet (outside powder coated), 30mm/50mm thick PU insulation;
4. Filters: synthetic prefilter, fine synthetic bag filter, etc;
5. Optional: heater, dehumidifier, etc.

## 11) Air Source Heat Pump



### Features:

1. Heating capacity 30~200kw;
2. Outlet water temp. 60°C;
3. Type: direct heating and water cycling;
4. Copeland scroll compressor

## 12) Precision Air Conditoner



### Features:

1. Cooling capacity 7~150kW;
2. Hermetic scroll compressor, Hitachi or Copeland brand;
3. Air cooled(JHF) or water cooled(JH);
4. Suitable for data center, computer rooms, precise equipment rooms.

































