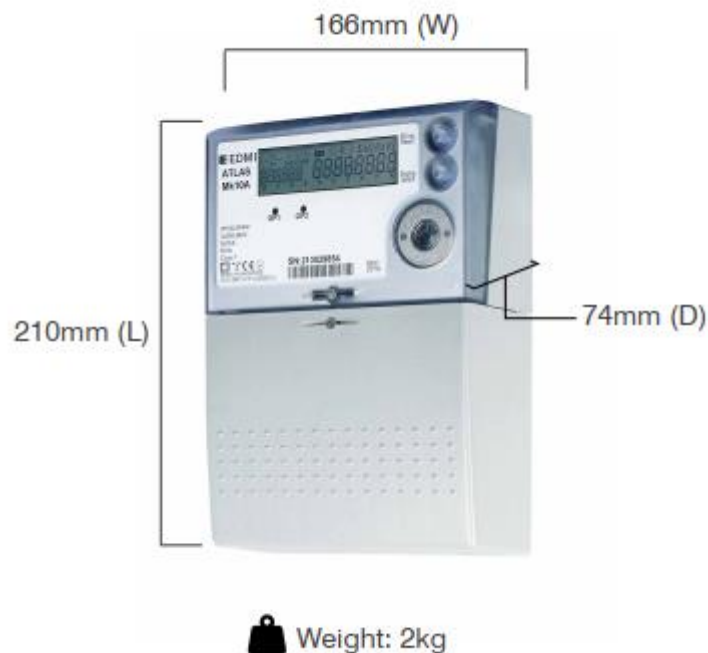


# Specifications Input – Output of Mk10A meter

- The SØ outputs are designed to switch up to 24VDC and 24mA.
- The BOSFET outputs are rated up to 240V, 100mA. They may switch either AC or DC voltages, any polarity.
- Pulse width : 1 – 100ms
- Pulse interval : 1 – 100ms
- Dimension :



- Terminal block of Input – Output

