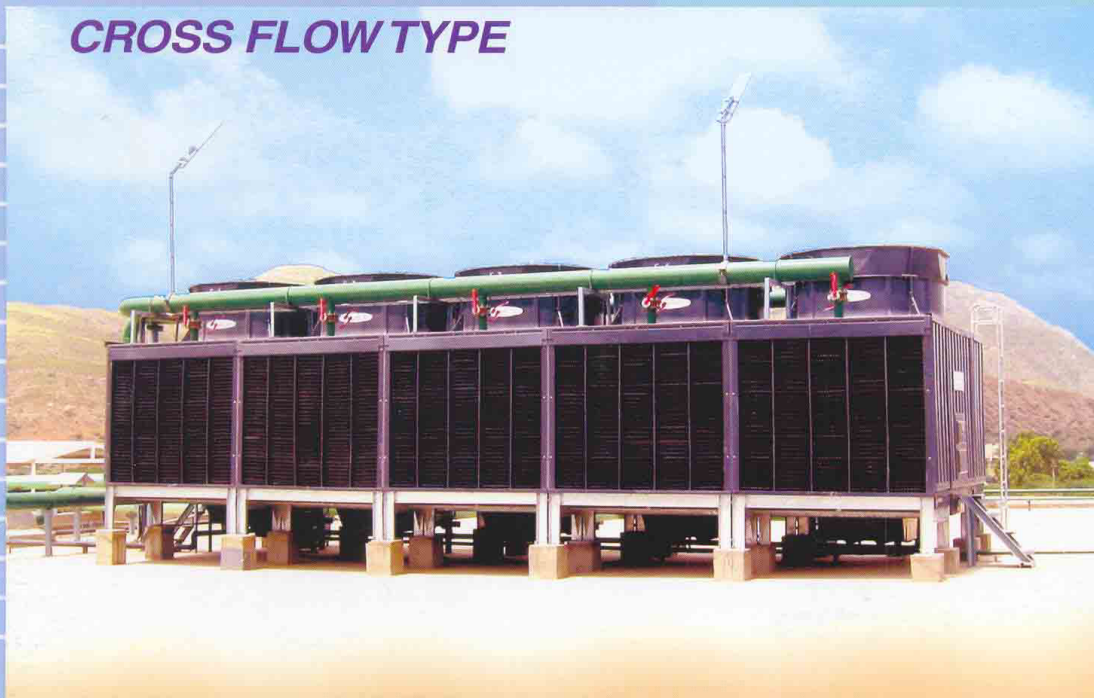




COOLING TOWER

**STA-SUN SERIES
CROSS FLOW TYPE**



**FOR INDUSTRIES,
BUILDINGS AND
PROCESS APPLICATIONS**



Product Features

- Space Saver
- Energy Saver
- Low Noise Level
- Compact Units
- Low Drift Loss
- Quakeproof Design
- Guaranteed Thermal Performance

SPACCO COOLING TOWER INDUSTRY CO.,LTD.

1 FEATURES

The advantages of the STA-SUN series due to another are:

1 Energy Saving

The fan power consumption is greatly reduced by the lower pressure loss filler together with the bell-mouthed fan stack.

2 Space-saving, light weight and package unit

Operating weight, installation space and time are lower than the conventional types since our higher-heat-exchange-rate filler.

3 Low noise level

STA series satisfy the standard noise level specified by JCI and CTI.

4 Anti-corrosiveness

All the main components are made of the anti-corrosive materials such as FRP and HDG steel.

5 No requirement of any special foundation

All the units supply with the standard footing so the very simple foundation is required.

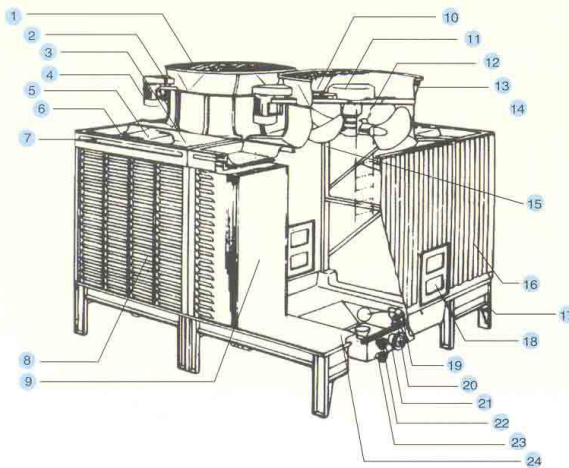
6 Fireproof material

All the units are constructed with FRP- the fireproof material.

7 Quakeproof design

Our standard design is based on 1.0th degree and 0.5th degree vertical. Any other specification and design are available.

2 STRUCTURE



3 OPTIONAL COMPONENTS

1 Internal Piping Type

All the models are also available with internal piping system. The distribution basin is equipped with a simple flow control valve. These types are different from standard one in hot water inlet pipe, dead weight, operating weight, internal head loss, and height of gravity

2 Safety Handrail

3 Super low noise pad

4 Special drift eliminators

5 Structure other than H.D.G. For Example SUS 304 or Fiber Glass Structure

6 Control and Monitoring Software For Technical details please contact Spacco Engineering Department.

STRUCTURE	MATERIAL			
	FRP	PVC	HDG	OTHERS
1 Fan guard			✓	
2 Moter cover	✓			
3 Overflow pipe	✓			
4 Moter				TEFC
5 Hot water inlet port	✓			
6 Distribution basin	✓			
7 Style Strip	✓			
8 Louvers		✓		
9 Filler		✓		
10 V-belt				POLY ESTER
11 Pulley cover	✓			
12 Ladder			✓	

STRUCTURE	MATERIAL			
	FRP	PVC	HDG	OTHERS
13 Fan stack	✓			
14 Fan Blade Hub assembly	✓			ALUMINIUM ALLOY
15 Framework			✓	
16 Casing	✓			
17 Basin frame			✓	
18 Access door	✓			
19 Automatic make-up water inlet pipe			✓	
20 Manual make-up water inlet pipe			✓	
21 Cold water outlet pipe	✓			
22 Overflow pipe			✓	
23 Drain pipe		✓		
24 Cold water basin	✓			

SUITABLE MODEL SELECTION CHART

Take the following operating conditions as an example :

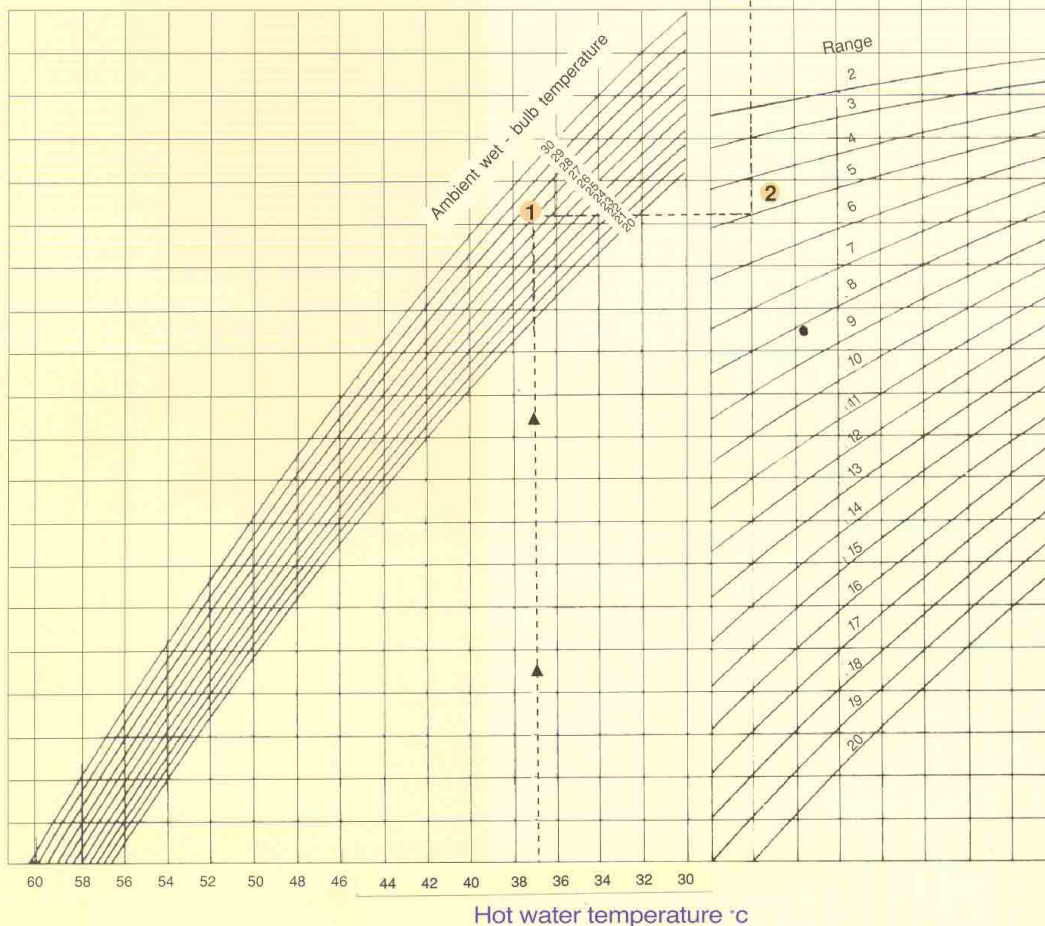
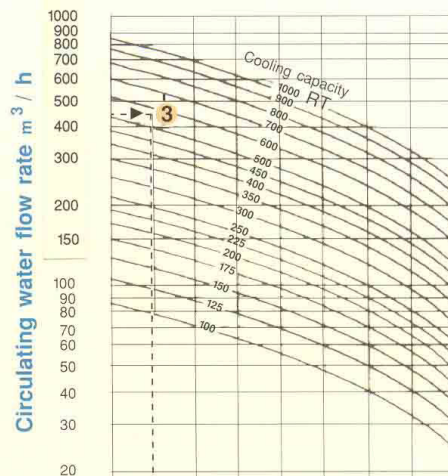
Hot water temperature :	37 °C
Cold water temperature :	32 °C
Range (hot-cold water temp, difference) :	5 °C
Ambient wet-bulb temperature :	27 °C
Circulating water flow rate :	450 m ³ / h

How to read the chart

- Trace up the hot water temperature of 37 °C vertically to find the intersecting point ① with the 27 °C ambient wet-bulb temperature curve.
- Shift the point ① to the right to find the intersection point ② with the 5 °C range curve.
- Then trace up again from the point ② to find the intersecting point ③ with the 450 m³/h circulating water flow rate.
- Now you notice the required cooling capacity of 560 ton;
The suitable model is STA-600SUN

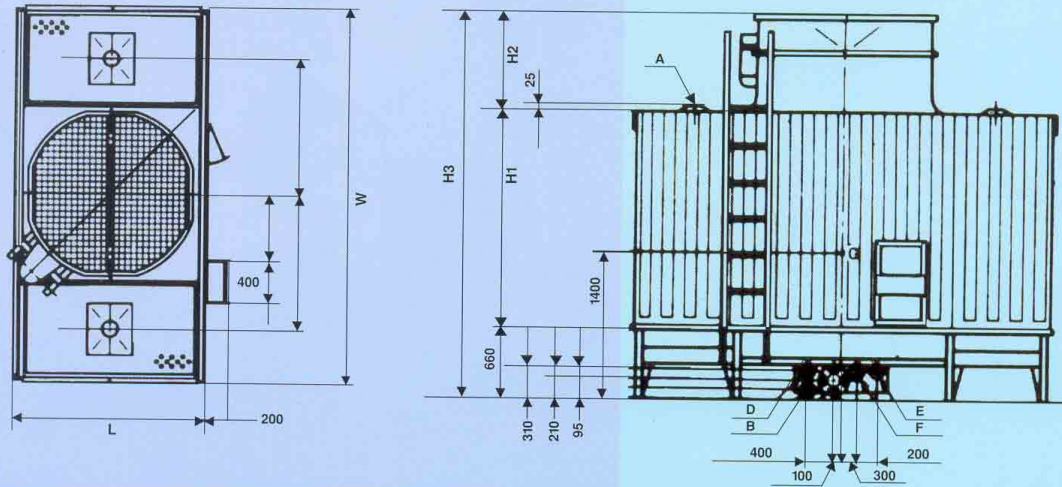
Remarks

- For cooling tower hot water temperature exceeding 50 °C, heat-resistant version should be used (delivered by special order)
- If suitable model cannot be found from the chart, please inquire us.



SINGLE CELL DIMENSION

For Technical details please contact Spacco Engineering



STA SERIES DIMENSION (SINGLE CELL)

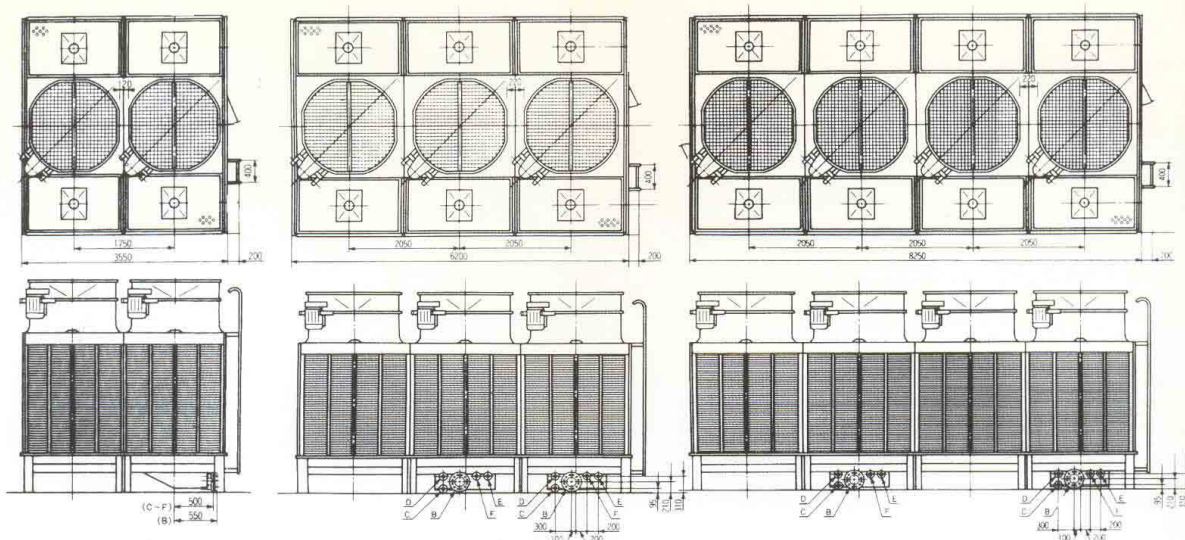
MODEL STA	FLOW RATE L/MIN M ³	OVERALL DIMENSION					FAN ASSEMBLY				WEIGHT APPROX		PIPE CONNECTION							PUMP HP
		L	W	H1	H2	H3	FAN Ø	MOTER HP	FAN SPEED	DRIVE	DEAD KG	OPERATING KG	I N LET	OUT LET	DRAIN	OVER D	AUTO E	QUICK F		
100 SUN	1300 78	1500	3560	2075	815	3550	1300X	2HP 4P 4HP 8P	512 750	V-BELT DIRECT DRIVE	970	1950	140X2 5	125 5	50A 2	50A 2	25A 1	25A 1	3.5	
125 SUN	1625 98	1500	3560	2075	815	3550	1300X1	3HP 4P 3HP 6P	625 750	V-BELT DIRECT DRIVE	990	1970	140X2 5	125 5	50A 2	50A 2	25A 1	25A 1	3.5	
150 SUN	1950 117	1800	3760	2075	915	3650	1500X1	5HP 4P 3HP 8P	465 750	V-BELT DIRECT DRIVE	1110	2360	140x2 6	165 6	50A 2	50A 2	25A 1	25A 1	3.5	
175 SUN	2275 137	1800	3760	2075	915	3650	1500X1	7.5HP 4P 5HP 8P	557 750	V-BELT DIRECT DRIVE	1200	2460	140x2 6	165 6	50A 2	50A 2	25A 1	25A 1	3.5	
200 SUN	2600 156	2100	3960	2075	915	3680	1700X1	7.5HP 4P 5HP 10P	495 560	V-BELT DIRECT DRIVE	1400	2840	140x2 6	165 6	65A 2.5	65A 2.5	25AX2 X2	40A 1.5	3.5	
250 SUN	3250 195	2450	4260	2075	915	3720	2000X1	7.5HP 4P 5HP 10P	450 560	V-BELT DIRECT DRIVE	1600	3510	140x2 8	200 8	65A 2.5	65A 2.5	25AX2 1X2	40A 1.5	4	
300 SUN	3900 234	2450	4565	2075	1200	3935	2000X1	10HP 4P 7.5HP 12P	475 480	V-BELT DIRECT DRIVE	1800	3700	165X2 8	200 8	80A 3	80A 3	25AX2 1	40A 1.5	4	
350 SUN	4560 273	3150	5080	2075	1200	3935	2400X1	10 HP 4P 7.5HP 12P	475 480	V-BELT DIRECT DRIVE	2000	4300	165X2 8	200 8	80A 3	80A 3	25AX2 1X2	40A 1.5	4	
400 SUN	5220 312	3150	5630	2800	1200	4800	2400	15 HP 4P	475	V-BELT OR GEAR	2800	5800	165X2 10	250 10	80A 3	80A 3	25X2 1X2	50A 2	5	
500 SUN	6500 390	3700	6000	2800	1200	4800	3000	15 HP 4P	380	V-BELT OR GEAR	3500	7506	165X2 10	250 10	80A 3	80A 3	25X2 1X2	50A 2	5	
600 SUN	7800 468	4000	6650	2800	1200	4800	3200	20 HP 4P	340	V-BELT OR GEAR	4250	8100	165X2 10	250 10	80A 3	80 A	25X2 1X2	50A 2	5	
700 SUN	9160 546	4000	6650	3200	1200	5300	3200	20 HP	340	V-BELT OR GEAR	4800	9000	200X2 10	250 10	80A 3	80A 3	25X2 1X2	50A 2	6	
800 SUN	10400 624	4600	6650	3400	1200	5700	3200	25 HP	340	V-BELT OR GEAR	5200	11250	200X2 12	300 12	100A 4	100A 4	25AX2 1X2	65A 2.5	6	
1000 SUN	13000 780	4600	7000	4300	1200	5800	3600	30 HP	320	V-BELT OR GEAR	7600	15200	200X2 12	300 12	100A 4	100A 4	25XAX2 1X2	65A 2.5	6	

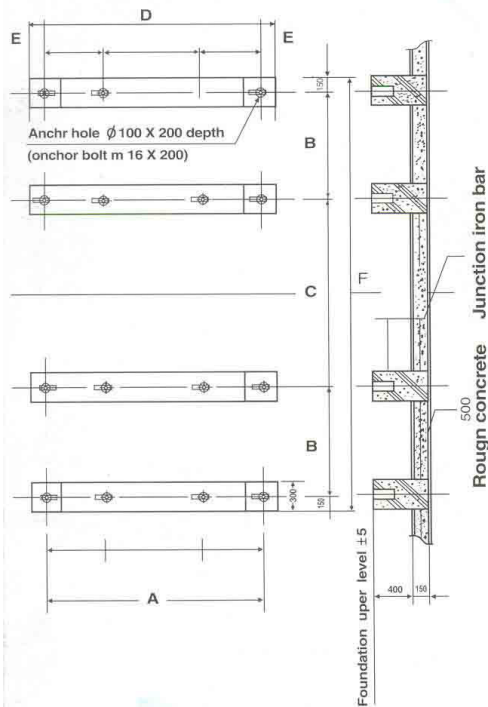
Nominal Flow Based On-Water in 37°C (98.6°F), Water Out 32°C (89.6°F) and Ambient 27°C WB (80.6°F WBH)

Normal cooling capacity is based on 13 l/min / RT (one RT = 3,900 kCal / h) at 37°C outlet water temperature and 27°C ambient wet bulb temperature for motor 5.5 kW and above, installation of stardelta starter is required.

Specifications listed in this catalogue are subject to change without further notice for technical improvement of our products.

PENCE	MULTIPLE CELL COMBINATION												
MODEL	100/125	150	175	200	250	300	350	400	500	600	700	800	1000
STA													
100 SUN	100-1 C			100-2 C		100-3 C		100-4 C					
125 SUN	125-1 C				125-2 C				125-4 C				
150 SUN		150-1 C				150-2 C				150-4 C			
175 SUN			175-1 C				175-2 C				175-4 C		
200 SUN				200-1 C				200-2 C		200-3 C		200-4 C	200-5 C
250 SUN					250-1 C				250-2 C				250-4 C
300 SUN		150X2 C				300-1 C				300-2 C			
350 SUN			175X2 C				350-1 C				350-2 C		
400 SUN				200-2 C				400-1 C				400-2 C	
500 SUN					250-2 C				500-1 C				500-2 C
600 SUN				200X3 C		300X2 C				600-1 C			
700 SUN			175X4 C		250X3 C		350-2 C				700-1 C		
800 SUN				200X4 C				400-2 C				800-1 C	
1000 SUN				200X5 C	250X4 C				500X2 C				1000-1 C
1050 SUN			176X6 C				350X3 C						
1200 SUN				200X6 C		300X4 C		400X3 C		600X2 C			
1250 SUN					250X5 C								
1400 SUN				200X7 C			350X4 C				700X2 C		
1500 SUN					250X6	300X5 C			500X3 C				
1600 SUN				200X8 C				400X4 C				800X2 C	
1800 SUN				200X9 C		300X6 C				600X3 C			
2000 SUN				200X10 C	250X8 C			400X5 C	500X4 C				1000X2 C
2500 SUN					250X10 C				500X5 C				
3000 SUN					250X12 C	300X10 C			500X6 C				1000X3 C





FOUNDATION (SINGLE CELL)

MODEL	A	B	C	D	E	F
STA 100-125	1300	1115	1240	1600		3560
150-175	1600	1115	1440	1900		3760
200	1900	1115	1640	2200		4170
250	2250	1115	1940	2550		4470
300	2250	1310	1940	2550		4860
350	3050	1115	2750	3350		5280
400	2930	1375	2880	3230	900	5690
500	3500	1375	3160	3800	1050	6210
600	3800	1375	3700	4100	1150	6750
700	3800	1375	3700	4100	1150	6750
800	4400	1375	4000	4700	1250	7050
1000	4400	1375	4000	4700	1250	7050

● MULTIPLE CELL FOUNDATION & DIMENTION PLEASE CONTACT SPACCO ENGINEERING DEPARTMENT



For Further Technical Information & detail Please Contact :
SPACCO COOLING TOWER INDUSTRY CO.,LTD

64/27 Moo 7 Raspattana Road, Kwang Sapansoong, Ket Sapansoong,
Bangkok 10240,Thailand, Phone : + 662-5172258, 662-518-1523-4, 662-9171412-3
Fax : + 662-5182175, Website : www.spacco.com, E-mail : spacco@ji-net.com,
info@spacco.com, spaccothai@yahoo.com

Distributor