

Product Data Sheet (2019-05-31)

T-plus Cast Iron

The T-plus is specially designed to create perfect branches quickly and easily, whilst the system remains in operation.

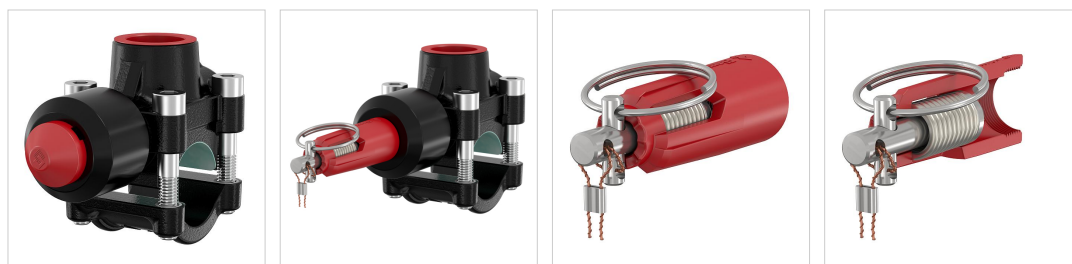
The design of the T-plus is unique and responds precisely to the requirements of installers and their customers. The combination of a plunger, striking pin and a trigger sets the new standard in the creation of branches for systems in operation.

The new branching mechanism (the trigger) means perfect installation everywhere, everytime. Once the pin is removed, the charge ignites and the striking pin shoots straight forward. This makes a clean cut in the pipe creating the branch. This makes it possible to make branches even where there is little available space. There is no need to use a hammer any more.

Areas of application

- Central heating and cooling installations.
- Potable installations.
- Solar installations.
- Fire protection systems.
- Industrial applications such as compressed air systems.

There are two types of T-plus available: a cast-iron version for thick-walled steel pipes and a brass version for copper pipes, thin-walled steel tubes and stainless-steel pipes.



| Type | Ø Pipe | | Branch connection | Permissible wall thickness | | Torque [Nm] | ### | Order Code |
|-------------------------|--------|-----------|-------------------|----------------------------|-----------|-------------|-----|------------|
| | Nom. | Ext. [mm] | | Min. [mm] | Max. [mm] | | | |
| T-plus DN 15 x Rp 1/2 | 1/2" | 21.3 | Rp 1/2" | 2.0 | 3.25 | 10 | 1 | 90615 |
| T-plus DN 20 x Rp 1/2 | 3/4" | 26.9 | Rp 1/2" | 2.0 | 3.25 | 10 | 1 | 90620 |
| T-plus DN 25 x Rp 3/4 | 1" | 33.7 | Rp 3/4" | 2.0 | 4.05 | 16 | 1 | 90626 |
| T-plus DN 32 x Rp 1 | 1 1/4" | 42.4 | Rp 1" | 2.0 | 4.05 | 16 | 1 | 90632 |
| T-plus DN 40 x Rp 1 1/4 | 1 1/2" | 48.3 | Rp 1 1/4" | 2.3 | 4.05 | 30 | 1 | 90640 |
| T-plus DN 50 x Rp 1 1/4 | 2" | 60.3 | Rp 1 1/4" | 2.3 | 4.50 | 30 | 1 | 90650 |
| T-plus DN 65 x Rp 1 1/4 | 2 1/2" | 76.1 | Rp 1 1/4" | 2.6 | 4.50 | 30 | 1 | 90665 |
| T-plus DN 80 x Rp 1 1/4 | 3" | 88.9 | Rp 1 1/4" | 2.9 | 5.00 | 30 | 1 | 90680 |



| Type | Dimensions | | | | | | | |
|--|------------|-----------|-----------|-----------|-----------|----------------|-----------|-----------|
| | A [mm] | B [mm] | C [mm] | D [mm] | E [mm] | F + 13 [mm] | K [mm] | M [mm] |
| T-plus DN 15 x Rp 1/2 | 100 | 28 | 19 | 67 | 47 | 166 | 66 | 21 |
| T-plus DN 20 x Rp 1/2 | 113 | 34 | 21 | 77 | 50 | 179 | 66 | 21 |
| T-plus DN 25 x Rp 3/4 | 115 | 35 | 25 | 83 | 56 | 181 | 66 | 21 |
| T-plus DN 32 x Rp 1 | 130 | 38 | 29 | 102 | 69 | 196 | 66 | 21 |
| T-plus DN 40 x Rp 1 1/4 | 165 | 55 | 35 | 123 | 83 | 231 | 66 | 21 |
| T-plus DN 50 x Rp 1 1/4 | 167 | 55 | 43 | 136 | 83 | 233 | 66 | 21 |
| T-plus DN 65 x Rp 1 1/4 | 190 | 66 | 52 | 153 | 83 | 256 | 66 | 21 |
| T-plus DN 80 x Rp 1 1/4 | 190 | 66 | 58 | 168 | 83 | 256 | 66 | 21 |

Advantages

- Saves installation time and costs.
- Create branches while the system is still in operation.
- Draining is not necessary, so no air and dirt can get into the system.
- A perfect branch every time due to the trigger.
- Easy to create a branch, even where space is restricted.
- Optimum pipe seal.
- Anti-corrosion coating.
- Single use (one shot) trigger mechanism. The trigger is included with the T-plus.
- Simple preparatory installation with click-in nuts (on models from 1 1/2").

Technical information

- Maximum permissible temperature: 120 °C.
- Maximum working pressure: 25 bar.

For steel pipes (St33, St34, St35, St37) from 1/2" to 3":

- Threaded pipes: NEN 3257 C Heavy, DIN 2441, BS 1387 Heavy (or lighter)/ISO 9329-1.
- Seamless steel pipes: DIN 2448/1629 Bl.3, St 35 / ISO 9330-1.
- Welded steel pipes: DIN 2458/1626 Bl.2, St 35.
- Material numbers:
1.0035 (St33)
1.0034, 10305 (St34)
1.0308, 10345 (St35)
1.0036, 1.0037, 1.0038, 1.0039, 1.0255, 1.0254 (St37).

Find more information online:

[Manuals](#)

[Certificates](#)

[Extra documentation](#)

[Animations](#)

Flamco Limited
Washway Lane
WA10 6PB, St Helens, Merseyside - gb
T 017 447 447 44
F 017 447 447 00
E info@flamco.co.uk
I flamcogroup.com/uk-en